

0030710

From: [Britta Muiznieks](#)
To: [Mike Murray](#); [Darrell Echols](#); [Thayer Broili](#)
Cc: [Cyndy Holda](#); [Doug McGee](#)
Subject: PIPL foraging
Date: 04/01/2011 04:03 PM
Attachments: [PIPL Foraging Outside Pre-nesting Closure.pptx](#)

All-

Just some more documentation to help justify the expanded closure on the east side of Cape Point.



PIPL Foraging Outside Pre-nesting Closure.pptx

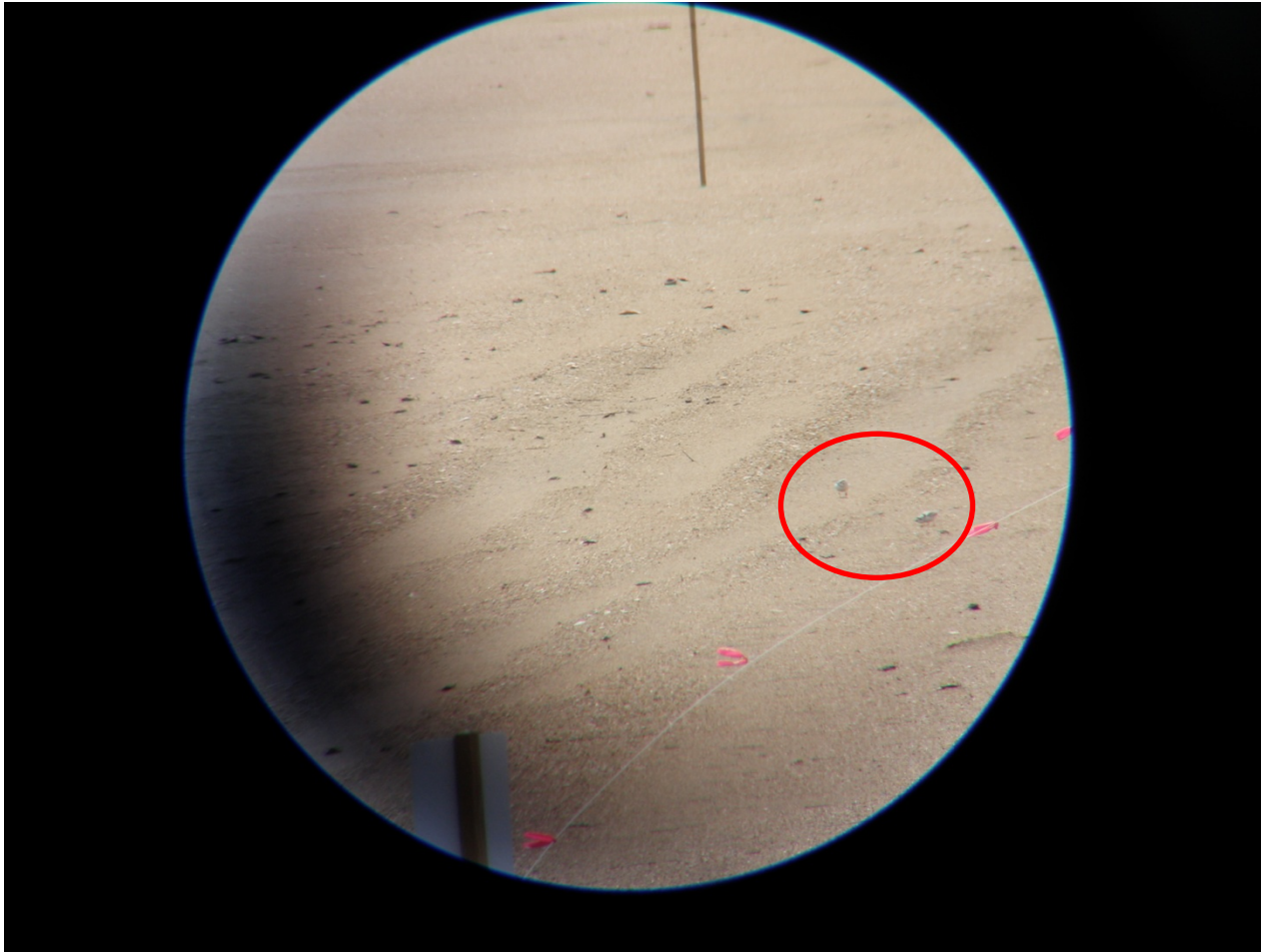
According to the FONSI (Pg. 36, Table 2)-Adult foraging: Piping plover: For adults foraging outside of a closure on two consecutive surveys, expand buffer to include foraging sites. These closures are intended to provide foraging opportunities close to breeding sites.

Britta Muiznieks
Wildlife Biologist
Cape Hatteras National Seashore

252-995-3740-**Office**
252-475-8348-**Cell**
252-995-6998-**FAX**

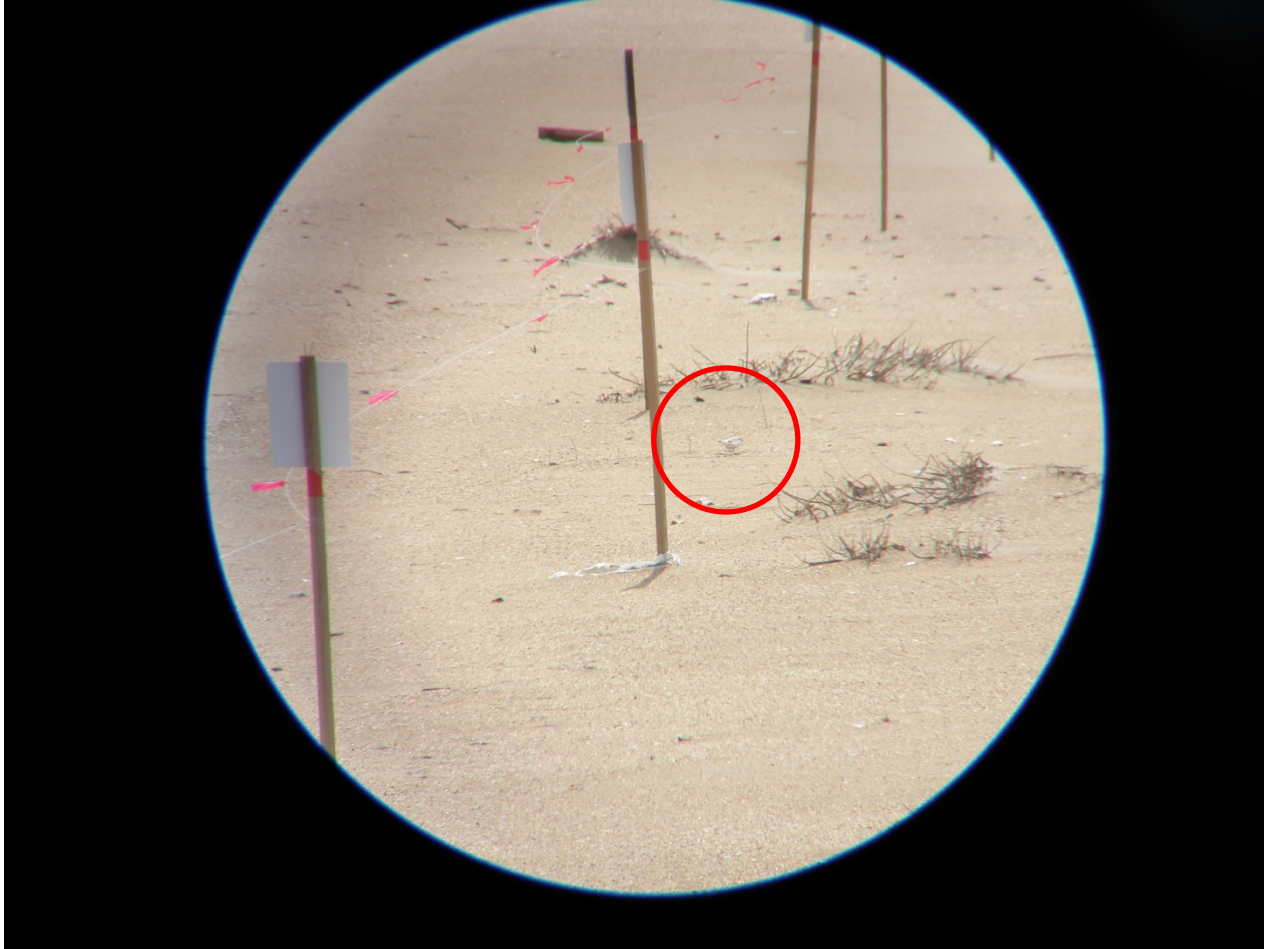
0030711

Two PIPLs foraging just inside the expanded pre-nesting closure on the east side of Cape Point



0030712

PIPL foraging on the closure boundary



0030713

One PIPL foraging more towards the middle of the closure expansion



0030714

Approximate PIPL locations of observations in previous pictures

