

0031019

**From:** [Mike Murray](#)  
**To:** [Jocelyn Wright](#)  
**Cc:** [Britta Muiznieks](#); [Thayer Broili](#)  
**Bcc:** [Cyndy Holda](#); [Paul Stevens](#); [Darrell Echols](#)  
**Subject:** winter closures  
**Date:** 08/01/2011 10:41 AM  
**Attachments:** [20100907\\_WM BI10-001.pdf](#)

---

Jocelyn,

As discussed during the bird call, the intent of the wintering closures in the Interim Strategy and in Table 10-1 of the FEIS is to give highest priority to protecting the most sensitive foraging sites at the inlets and points, without closing off large expanses of terrain to all access (i.e., the intent is to NOT manage wintering habitat to the same level of closure/protection as prenesting/nesting habitat). See attached map of 2010 Bodie Island Spit winter closure. Although the site specific details at BI Spit are different than the details at South Point or North Ocracoke, in my opinion the Bodie Island winter map shows a reasonable proportion of complete closure vs. pedestrian area vs. ORV corridor. It is likely that the pedestrian area will be lightly used and therefore provide, on average, a much lower level of disturbance than the ORV corridor.



20100907\_WM BI10-001.pdf

Thanks,

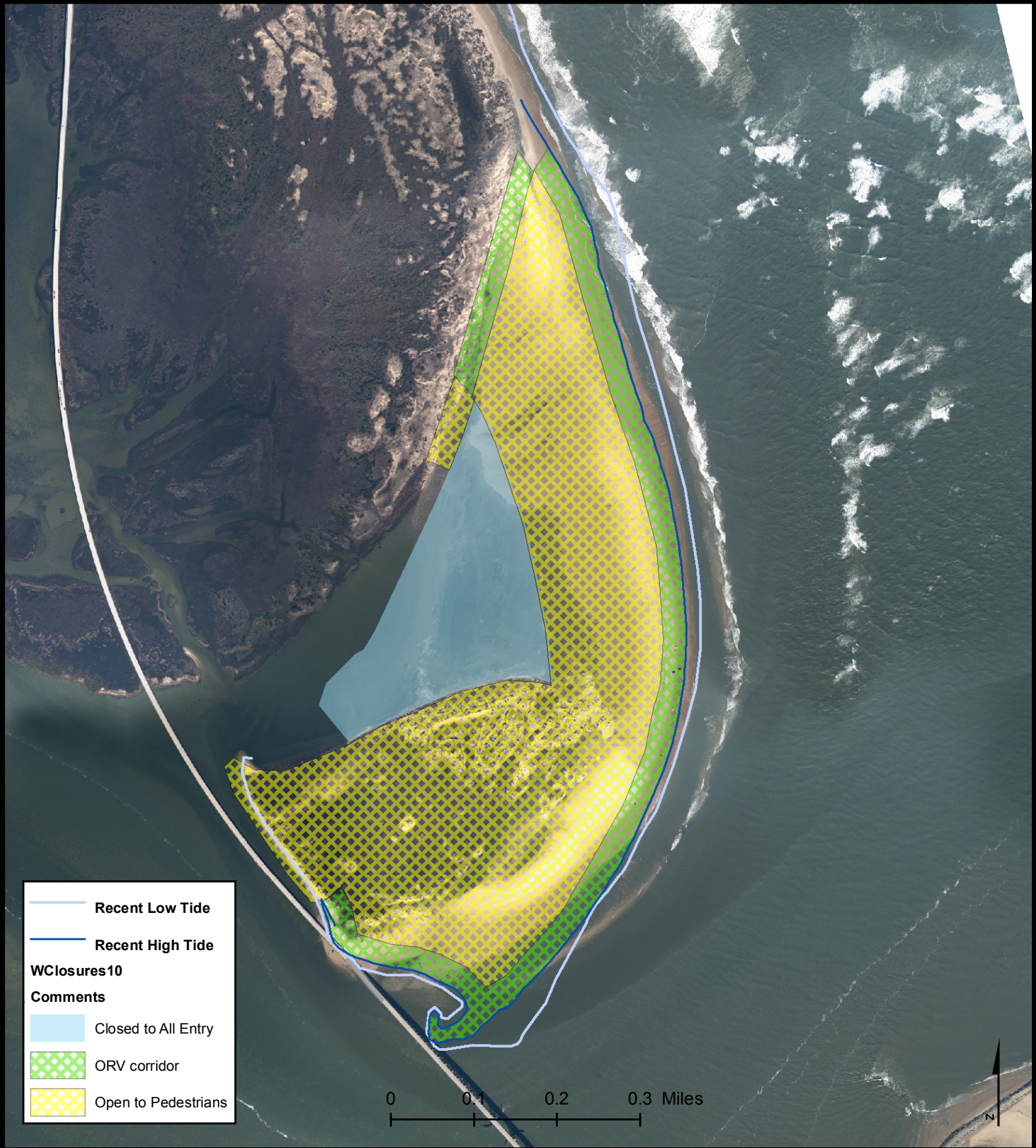
Mike Murray  
Superintendent  
Cape Hatteras NS/ Wright Brothers NMem/ Ft. Raleigh NHS  
(w) 252-473-2111, ext. 148  
(c) 252-216-5520  
fax 252-473-2595

**CONFIDENTIALITY NOTICE**

This message is intended exclusively for the individual or entity to which it is addressed. This communication may contain information that is proprietary, privileged or confidential or otherwise legally exempt from disclosure.



# WM BI10-001 Closure Request



— Recent Low Tide  
— Recent High Tide

**WClosures10**

**Comments**

□ Closed to All Entry  
▨ ORV corridor  
▨ Open to Pedestrians

0 0.1 0.2 0.3 Miles