



## STATS Indiana IBRC

A to Z About the Profile Email



USA Counties IN Profile

 Select State  Select County 

Compare Within

U.S.  State 
[Indiana IN Depth](#)  
[City/Co. Finder](#)  
[Range Finder](#)  
[Maps](#)
Single County | [Side by Side](#)[Get Data](#) [Print](#)

Overview

Population

Housing

Income

Labor

BLS

BEA

All

## Overview for Dare County, NC

Part of: Kill Devil Hills NC, Metropolitan Area

**STATS Indiana**  
 from the IBRC


**Dare County** is one of about 3,141 counties and county equivalents in the United States. It has 383.6 sq. miles in land area and a population density of 87.4 per square mile. In the last three decades of the 1900s its population grew by 328.4%. On the 2000 census form, 99.0% of the population reported only one race, with 2.7% of these reporting African-American. The population of this county is 2.2% Hispanic (of any race). The average household size is 2.34 persons compared to an average family size of 2.79 persons.

In 2004 accommodation and food services was the largest of 20 major sectors. It had an average wage per job of \$14,877. Per capita income grew by 27.8% between 1993 and 2003 (adjusted for inflation).

People & Income Overview (By Place of Residence)	Value	Rank in U.S.	Industry Overview (2004) (By Place of Work)	Value	Rank in U.S.
Population (2004)	33,518	1324	Covered Employment	19,816	867
Growth (%) since 1990	47.4%	223	Avg wage per job	\$25,009	2157
Households (2000)	12,690	1301	Manufacturing - % all jobs in County	3.6%	2459
Labor Force (persons) (2004)	22,687	1004	Avg wage per job	\$30,389	1874
Unemployment Rate (2004)	4.5	2235	Transportation & Warehousing - % all jobs in County	1.3%	2042
Per Capita Personal Income (2003)	\$29,466	489	Avg wage per job	\$30,688	2353
Median Household Income (2002)	\$42,827	551	Health Care, Social Assist. - % all jobs in County	3.8%	1927
Poverty Rate (2002)	8.2	2700	Avg wage per job	\$35,152	478
H.S. Diploma or More - % of Adults 25+ (2000)	88.6	195	Finance and Insurance - % all jobs in County	2.4%	1623
Bachelor's Deg. or More - % of Adults 25+ (2000)	27.7	273	Avg wage per job	\$51,715	218

USA Counties IN Profile provides current federal statistics on a variety of demographic and economic indicators. Read "About the Profile" for the best understanding of the data, ranks and computations. This profile is produced by **STATS Indiana**, a web service of the Indiana Business Research Center at the Indiana University Kelley School of Business. Major support for this effort is provided by the State of Indiana through the [Indiana Economic Development Corporation](#).

Updated: September 30, 2005 at 01:32

STATS Indiana IBRC

[A to Z](#) [About the Profile](#) [Email](#)



Select State  Select County

Compare Within  
U.S.  State



[Indiana IN Depth](#)  
[City/Co. Finder](#)  
[Range Finder](#)  
[Maps](#)

Single County | [Side by Side](#)

[Overview](#) [Population](#) [Housing](#) [Income](#) [Labor](#) [BLS](#) [BEA](#) [All](#)

**Population for Dare County, NC**  
Part of: Kill Devil Hills NC, Micropolitan Area

*STATS Indiana*  
from the IBRC

Population Over Time	Number	Rank in U.S.	Percent of U.S.	U.S.
2004	33,518	1324	0.01%	293,655,404
2000	29,967	1398	0.01%	281,421,906
1990	22,746	1547	0.01%	248,790,925
1980	13,377	2106	0.01%	226,542,250
1970	6,995	2598	<0.01%	203,302,037
1990 to 2000 % change	31.7%	266		13.1%
1980 to 2000 % change	124.0%	56		24.2%
1970 to 2000 % change	328.4%	43		38.4%

Source: US Census Bureau

Components of Population Change in 2004	Number	Rank in U.S.	Percent of U.S.	U.S.
Net Domestic Migration (chg 2003/2004)	390	556		
Net International Migration (chg 2003/2004)	41	1057	<0.01%	1,221,013
Natural Increase (births minus deaths)	41	1615	<0.01%	1,645,415
Births	349	1495	0.01%	4,099,399
Deaths	308	1386	0.01%	2,453,984

Source: US Census Bureau

Population Estimates by Age in 2004	Number	Rank in U.S.	Pct Dist. in County	Pct Dist. in U.S.
Preschool (0 to 4)	1,806	1427	5.4%	6.8%
School Age (5 to 17)	5,326	1400	15.9%	18.1%
College Age (18 to 24)	2,692	1538	8.0%	10.0%
Young Adult (25 to 44)	9,393	1247	28.0%	28.7%
Older Adult(45 to 64)	9,654	1162	28.8%	24.1%
Older (65 plus)	4,647	1315	13.9%	12.4%
Median Age	40.7	845		Median Age = 36.0

Sources: US Census Bureau; Median age calculated by the IBRC.

Population Estimates by Race and Hispanic Origin in 2004	Number	Rank in U.S.	Pct Dist. in County	Pct Dist. in U.S.
American Ind. or Alaskan Native Alone	101	1703	0.3%	1.0%
Asian Alone	175	1260	0.5%	4.2%
Black Alone	972	1458	2.9%	12.8%
Native Hawaiian and Other Pac. Isl. Alone	5	1399	0.0%	0.2%
White Alone	32,009	1240	95.5%	80.4%
Two or More Race Groups	256	1300	0.8%	1.5%
Hispanic or Latino (can be of any race)				
Non-Hispanic or Latino	32,590	1292	97.2%	85.9%
Hispanic or Latino	928	1329	2.8%	14.1%

Source: US Census Bureau

Hispanic or Latino Population in 2000 (can be of any race)	Number	Rank in U.S.	Pct Dist. in County	Pct Dist. in U.S.
Hispanic	666	1395	2.2%	12.5%
Mexican	350	1439	1.2%	7.3%
Cuban	23	908	0.1%	0.4%

STATS Indiana IBRC

A to Z About the Profile Email



Select State  Select County

Compare Within  
U.S.  State



Indiana IN Depth  
City/Co. Finder  
Range Finder  
Maps

Single County | Side by Side

Overview Population Housing Income Labor BLS BEA All

**Households and Housing for Dare County, NC**

Part of: Kill Devil Hills NC, Metropolitan Area

STATS Indiana  
from the IBRC

Households in 2000	Number	Rank in U.S.	Pct All Hhlds in County	Pct All Hhlds in U.S.
Total Households	12,690	1301	100.0%	100.0%
Family Households	8,451	1357	66.6%	68.1%
Married with Children	2,568	1435	20.2%	23.5%
Married without Children	4,413	1211	34.8%	28.1%
Single Parents	899	1471	7.1%	9.2%
Other	571	1548	4.5%	7.1%
Non-family Households	4,239	1153	33.4%	31.9%
Living Alone	3,176	1268	25.0%	25.8%
Average Household Size	2.34	2788		
Average Family Household Size	2.79	3035		

Source: US Census Bureau

Housing Units in 2000	Number	Rank in U.S.	Pct All HU in County	Pct All HU in U.S.
2004 Housing Units (estimate)	30,555	734		
Total Housing Units	26,671	792	100.0%	100.0%
Occupied	12,690	1301	47.6%	91.0%
Owner Occupied	9,460	1300	35.5%	60.2%
Renter Occupied	3,230	1265	12.1%	30.8%
Vacant	13,981	120	52.4%	9.0%
For seasonal or recreational use	13,355	32	50.1%	3.1%

Source: US Census Bureau

Residential Building Permits in 2004	Units	Pct Dist. in County	Pct Dist. in U.S.	Cost (\$000)
Total Permits Filed	858	100.0%	100.0%	\$252,373
Single Family	813	94.8%	78.0%	\$247,180
Two Family	4	0.5%	2.1%	\$610
Three & Four Family	0	0.0%	2.3%	\$0
Five Families and More	41	4.8%	17.6%	\$4,583

Source: US Census Bureau

USA Counties IN Profile provides current federal statistics on a variety of demographic and economic indicators. Read "About the Profile" for the best understanding of the data, ranks and computations. This profile is produced by **STATS Indiana**, a web service of the Indiana Business Research Center at the Indiana University Kelley School of Business. Major support for this effort is provided by the State of Indiana through the Indiana Economic Development Corporation.  
Updated: September 30, 2005 at 01:32

*2002 Hyde 6.9*  
*5.9*  
*Dare 4.2*  
*4.5*

STATS Indiana IBRC

A to Z About the Profile Email



Select State  Select County

Compare Within  
U.S.  State



Indiana IN Depth  
City/Co. Finder  
Range Finder  
Maps

Single County | Side by Side

- Overview
- Population
- Housing
- Income
- Labor
- BLS
- BEA
- All

**Income and Poverty for Dare County, NC**

Part of: Kill Devil Hills NC, Micropolitan Area

**STATS Indiana**  
from the IBRC

Median Income	Number	Rank in U.S.	Percent of U.S.
Median household income in 2002	\$42,827	551	101.0%
Median household income in 1997 (adj. for inflation)	\$39,520	952	95.3%
5-year percent change 1997 to 2002	8.4%	140	

Source: US Census Bureau

Per Capita Personal Income	Number	Rank in U.S.	Percent of U.S.
Per capita income - 2003	\$29,466	489	93.6%
Per capita income - 1993 (adj. for inflation)	\$23,052	953	84.8%
Per capita income - 1983 (adj. for inflation)	\$17,487	1872	75.0%
Per capita income - 1973 (adj. for inflation)	\$18,711	1450	86.3%
10-year % change	27.8%	212	
20-year % change	68.5%	89	
30-year % change	57.5%	613	

Source: US Bureau of Economic Analysis

Personal Income in 2003 (\$000)	Number	5-Year % Change (adj*)	Rank in % Change
<b>Total Earnings by Place of Work</b>	\$734,597	37.5%	80
Minus: Contributions for government social insurance	\$81,849	36.3%	60
Personal contributions for government social insurance	\$44,851	32.0%	89
Employer contributions for government social insurance	\$36,998	41.9%	56
Plus: Adjustment for residence	-\$9,328	4.3%	2038
<b>Equals: Net Earnings by Place of Residence</b>	\$643,420	38.2%	50
Plus: Dividends, rent, interest	\$198,756	-3.3%	772
Plus: Transfer payments	\$131,602	28.0%	534
<b>Equals: Personal Income by Place of Residence</b>	\$973,778	25.8%	76


Source: US Bureau of Economic Analysis (\*adj = Adjusted for Inflation)

Poverty Estimates	Number	Rank in U.S.	5-Year % Change	Rank in % Change
Poverty rate in 2002	8.2	2700	--	--
In 1997	8.1	2808	1.2%	594
Poverty rate for children under 18 in 2002	11.0	2548	--	--
In 1997	12.5	2675	-12.0%	1215

Source: US Census Bureau

USA Counties IN Profile provides current federal statistics on a variety of demographic and economic indicators. Read "About the Profile" for the best understanding of the data, ranks and computations. This profile is produced by **STATS Indiana**, a web service of the Indiana Business Research Center at the Indiana University Kelley School of Business. Major support for this effort is provided by the State of Indiana through the Indiana Economic Development Corporation.  
Updated: September 30, 2005 at 01:32


**STATS Indiana IBRC** A to Z About the Profile Email



**USA Counties IN Profile**

Select State  Select County

Compare Within  
U.S.  State



Indiana IN Depth  
City/Co. Finder  
Range Finder  
Maps

Single County | Side by Side

Overview Population Housing Income Labor BLS BEA All

**Labor Force for Dare County, NC**  
Part of: Kill Devil Hills NC, Metropolitan Area

*STATS Indiana*  
from the IBRC

Labor Force Annual Averages in 2004	Number	% of U.S.	U.S.	Rank in U.S.
Total Labor Force	22,687	0.02%	147,401,000	1004
5-year % change	22.1%	-	5.8%	279
10-year % change	47.9%	-	12.5%	98
Employed	21,660	0.02%	139,252,000	994
5-year % change	22.6%	-	4.3%	267
10-year % change	50.2%	-	13.2%	94
Unemployed	1,027	0.01%	8,149,000	1205
5-year % change	12.6%	-	38.6%	2155
10-year % change	12.0%	-	1.9%	1297
Unemployment Rate	4.5	81.82%	5.5	2235
5-year % change	-8.2%	-	31.0%	2546
10-year % change	-25.0%	-	-9.8%	2489

Source: US Bureau of Labor Statistics

Educational Attainment: Census 2000	Number	Percent of Population 25+	Rank of % in U.S.	U.S. % of Population 25+
Total Population 25 and Older	21,713	100.0%		100.0%
Less Than 9th Grade	619	2.9%	2,997	7.5%
9th to 12th, No Diploma	1,861	8.6%	2,607	12.1%
High School Graduate (incl. equiv.)	5,994	27.6%	2,721	28.6%
Some College, No Degree	5,830	26.9%	240	21.0%
Associate Degree	1,401	6.5%	1,022	6.3%
Bachelor's Degree	4,174	19.2%	206	15.5%
Graduate or Professional Degree	1,834	8.4%	434	8.9%

Source: US Census Bureau

Workers Living in County in 2000	Number	Rank in U.S.	Pct Dist. in County	Rank of Pct Dist.
Total	15,401	1,244	100.0%	
Working in County	13,881	978	90.1%	334
Working Elsewhere	1,520	2,250	9.9%	2,802

Source: US Census Bureau (Includes only domestic commuting for workers over 16 years old.)

People Working in County in 2000	Number	Rank in U.S.	Pct Dist. in County	Rank of Pct Dist.
Total	17,213	1,016	100.0%	
Living in County	13,881	978	80.6%	1,216
Living Elsewhere	3,332	1,139	19.4%	1,918


Source: US Census Bureau (Includes only domestic commuting for workers over 16 years old.)

Commuting Flows in 2000	Number	Rank in U.S.	Pct Dist.
Gross Flow (Living Elsewhere + Working Elsewhere)	4,852	1,680	100%
Net Flow (Living Elsewhere - Working Elsewhere)	1,812	384	
Largest Single Inflow : Currituck County, NC	1,539		31.7%
Largest Single Outflow : Currituck County, NC	703		14.5%

Source: US Census Bureau (Includes only domestic commuting for workers over 16 years old.)

USA Counties IN Profile provides current federal statistics on a variety of demographic and economic indicators. Read "About the Profile" for the best understanding of the data, ranks and computations. This profile is produced by **STATS Indiana**, a web service of the Indiana Business Research Center at the Indiana University Kelley School of Business. Major support for this effort is provided by the State of Indiana through the Indiana Economic Development Corporation.


**STATS Indiana IBRC** A to Z About the Profile Email



**USA Counties IN Profile**

Select State  Select County

Compare Within  
U.S.  State



Indiana IN Depth  
City/Co. Finder  
Range Finder  
Maps

Single County | Side by Side

Overview    Population    Housing    Income    Labor    BLS    BEA    All

### BEA Employment and Earnings for Dare County, NC

Part of: Kill Devil Hills NC, Micropolitan Area **STATS Indiana**  
from the IBRC

BEA Major Sectors (NAICS) in 2003 (by place of work)	Earnings (\$000)	Avg Earnings Per Job	Rank in U.S.	Jobs	Pct Dist. in County	Pct Dist. in U.S.
Total by place of work	\$734,597	\$26,401	1,879	27,825	100.0%	100.0%
Wage and Salary	\$498,969	\$24,425	2,002	20,429	73.4%	82.1%
Proprietors	\$133,155	\$18,004	996	7,396	26.6%	17.9%
Farm	\$0	N/A	N/A	0	0.0%	1.3%
Nonfarm	\$133,155	\$18,004	915	7,396	26.6%	16.5%
Farm	\$0	N/A	N/A	0	0.0%	1.8%
Nonfarm	\$734,597	\$26,401	2,046	27,825	100.0%	98.2%
Private	\$611,630	\$24,588	1,963	24,875	89.4%	84.0%
Forestry, fishing, etc. *	D	N/A	N/A	D	D	0.6%
21 Mining	D	N/A	N/A	D	D	0.4%
22 Utilities	\$7,631	\$86,716	360	88	0.3%	0.4%
23 Construction	\$103,736	\$33,746	796	3,074	11.0%	5.8%
31-33 Manufacturing	\$24,372	\$37,438	1,810	651	2.3%	9.0%
42 Wholesale Trade	\$13,245	\$28,919	1,929	458	1.6%	3.7%
44-45 Retail Trade	\$100,374	\$23,814	480	4,215	15.1%	11.0%
48-49 Trans. and warehousing	\$6,747	\$23,266	1,676	290	1.0%	3.2%
51 Information	\$11,841	\$34,623	1,301	342	1.2%	2.1%
52 Finance and insurance	\$36,071	\$55,579	139	649	2.3%	4.8%
53 Real Estate and rental and leasing	\$84,401	\$23,206	396	3,637	13.1%	3.5%
54 Professional, technical services	D	N/A	N/A	D	D	6.3%
55 Management of companies, enterprises	D	N/A	N/A	D	D	1.1%
56 Administrative and waste services	\$20,793	\$13,415	1,395	1,550	5.6%	5.8%
61 Educational services	\$1,457	\$12,560	1,081	116	0.4%	2.0%
62 Health care, social assistance	\$31,054	\$33,976	666	914	3.3%	9.9%
71 Arts, entertainment, and recreation	\$12,424	\$15,608	496	796	2.9%	2.0%
72 Accommodation and food services	\$81,141	\$17,297	200	4,691	16.9%	6.7%
81 Other services, exc. public admin.	\$25,452	\$17,937	994	1,419	5.1%	5.7%
NA Gov. and gov. enterprises	\$122,967	\$41,684	753	2,950	10.6%	14.2%

Source: US Bureau of Economic Analysis (BEA)  
D = Not shown to avoid disclosure of confidential information, but the estimates for this item are included in the totals.  
L = Less than 10 jobs, but the estimates for this item are included in the totals.  
N/A = Not available or not applicable.  
\* = "Other" consists of the number of jobs held by U.S. residents employed by international organizations and foreign embassies and consulates in the United States.

**USA Counties IN Profile** provides current federal statistics on a variety of demographic and economic indicators. Read "About the Profile" for the best understanding of the data, ranks and computations. This profile is produced by **STATS Indiana**, a web service of the Indiana Business Research Center at the Indiana University Kelley School of Business. Major support for this effort is provided by the State of Indiana through the Indiana Economic Development Corporation.

262

STATS Indiana IBRC

[A to Z](#) [About the Profile](#) [Email](#)



Select State  Select County

Compare Within  
U.S.  State



[Indiana IN Depth](#)  
[City/Co. Finder](#)  
[Range Finder](#)  
[Maps](#)

Single County | Side by Side

Overview Population Housing Income Labor BLS BEA All

Overview for North Carolina

**STATS Indiana**  
from the IBRC



North Carolina is one of 50 states in the United States (ranks include the District of Columbia). It has 48,710.9 sq. miles in land area and a population density of 175.3 per square mile. In the last three decades of the 1900s its population grew by 58.3%. On the 2000 census form, 98.7% of the population reported only one race, with 21.6% of these reporting African-American. The population of this state is 4.7% Hispanic (of any race). The average household size is 2.49 persons compared to an average family size of 2.98 persons.

In 2004 manufacturing was the largest of 20 major sectors. It had an average wage per job of \$41,696. Per capita income grew by 12.6% between 1993 and 2003 (adjusted for inflation).

People & Income Overview (By Place of Residence)	Value	Rank in U.S.	Industry Overview (2004) (By Place of Work)	Value	Rank in U.S.
Population (2004)	8,541,221	11	Covered Employment	3,776,904	11
Growth (%) since 1990	28.8%	9	Avg wage per job	\$34,787	29
Households (2000)	3,132,013	9	Manufacturing - % all jobs in State	15.4%	10
Labor Force (persons) (2004)	4,256,340	11	Avg wage per job	\$41,696	34
Unemployment Rate (2004)	5.5	17	Transportation & Warehousing - % all jobs in State	3.6%	26
Per Capita Personal Income (2003)	\$28,071	38	Avg wage per job	\$38,056	28
Median Household Income (2002)	\$38,194	37	Health Care, Social Assist. - % all jobs in State	12.4%	25
Poverty Rate (2002)	12.9	18	Avg wage per job	\$35,536	27
H.S. Diploma or More - % of Adults 25+ (2000)	78.1	39	Finance and Insurance - % all jobs in State	3.7%	34
Bachelor's Deg. or More - % of Adults 25+ (2000)	22.5	29	Avg wage per job	\$60,147	16

USA Counties IN Profile provides current federal statistics on a variety of demographic and economic indicators. Read "About the Profile" for the best understanding of the data, ranks and computations. This profile is produced by **STATS Indiana**, a web service of the Indiana Business Research Center at the Indiana University Kelley School of Business. Major support for this effort is provided by the State of Indiana through the [Indiana Economic Development Corporation](#).  
Updated: September 30, 2005 at 01:24

STATS Indiana IBRC

A to Z About the Profile Email



Select State  Select County

Compare Within  
U.S.  State



Indiana IN Depth  
City/Co. Finder  
Range Finder  
Maps

Single County | Side by Side

Overview Population Housing Income Labor BLS BEA All

Population for North Carolina

STATS Indiana  
from the IBRC

Population Over Time	Number	Rank in U.S.	Percent of U.S.	U.S.
2004	8,541,221	11	2.91%	293,655,404
2000	8,049,313	11	2.86%	281,421,906
1990	6,632,448	10	2.67%	248,790,925
1980	5,880,096	10	2.60%	226,542,250
1970	5,084,411	12	2.50%	203,302,037
1990 to 2000 % change	21.4%	9		13.1%
1980 to 2000 % change	36.9%	13		24.2%
1970 to 2000 % change	58.3%	15		38.4%

Source: US Census Bureau

Components of Population Change in 2004	Number	Rank in U.S.	Percent of U.S.	U.S.
Net Domestic Migration (chg 2003/2004)	46,131	4		
Net International Migration (chg 2003/2004)	29,854	10	2.45%	1,221,013
Natural Increase (births minus deaths)	43,902	9	2.67%	1,645,415
Births	119,288	10	2.91%	4,099,399
Deaths	75,386	9	3.07%	2,453,984

Source: US Census Bureau

Population Estimates by Age in 2004	Number	Rank in U.S.	Pct Dist. in State	Pct Dist. in U.S.
Preschool (0 to 4)	600,113	10	7.0%	6.8%
School Age (5 to 17)	1,518,379	11	17.8%	18.1%
College Age (18 to 24)	828,100	10	9.7%	10.0%
Young Adult (25 to 44)	2,531,063	10	29.6%	28.7%
Older Adult(45 to 64)	2,031,317	10	23.8%	24.1%
Older (65 plus)	1,032,249	10	12.1%	12.4%
Median Age	35.7	36		Median Age = 36.0

Sources: US Census Bureau; Median age calculated by the IBRC.

Population Estimates by Race and Hispanic Origin in 2004	Number	Rank in U.S.	Pct Dist. in State	Pct Dist. in U.S.
American Ind. or Alaskan Native Alone	110,198	6	1.3%	1.0%
Asian Alone	148,299	17	1.7%	4.2%
Black Alone	1,861,416	7	21.8%	12.8%
Native Hawaiian and Other Pac. Isl. Alone	5,784	15	0.1%	0.2%
White Alone	6,332,037	10	74.1%	80.4%
Two or More Race Groups	83,487	16	1.0%	1.5%
Hispanic or Latino (can be of any race)				
Non-Hispanic or Latino	8,023,604	10	93.9%	85.9%
Hispanic or Latino	517,617	13	6.1%	14.1%

Source: US Census Bureau

Hispanic or Latino Population in 2000 (can be of any race)	Number	Rank in U.S.	Pct Dist. in State	Pct Dist. in U.S.
Hispanic	378,963	15	4.7%	12.5%
Mexican	246,545	12	3.1%	7.3%
Cuban	7,389	13	0.1%	0.4%



[County Profiles Home](#)[NCST 2000](#)[NC Studies Home](#)

## Dare County

by Angel Hendrix  
Fall 2000

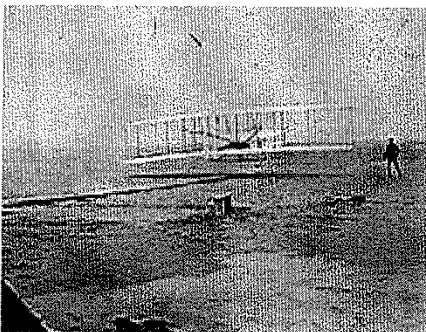


Dare County is located on the northern coast of North Carolina. Founded in 1870, it makes up most of the outer banks including Hatteras Island, Nags Head, and Kitty Hawk. While also including Roanoke Island, and a small part of the mainland (Stick). The population of this area is 29,000 permanent residents, but can reach can reach up to 250,000 in peak tourist months. Dare County is 383.5 square mile total (*Welcome to Dare County*). Dare County is rich in history, home to many wildlife sanctuaries, and the attractive beaches and laid back lifestyle make it one of the largest tourist attractions on the East Coast.

The first New World settlement occurred in 1587 on what is now Roanoke Island. This colony was lead by Sir Walter Raleigh and consisted of 112 English men, women, and children. The Native Americans living in this area at this time were already tired of Englishmen due to Ralph Lane's attack on their villages despite their friendliness and willingness to help the new arrivals. So contact with the Native Americans and this new colony was minimal, at least in the beginning. On August 18, 1587 the first child of English parents was born in the New World. Her name was Virginia Dare; Dare County would later be named in her honor. This colonies mysterious disappearance still baffles historians today (Stick). This area remained fairly quiet, with the exception of Manteo, until the 1830's. During this time plantation owners bought 200 acres of land in Nags Head after noticing the potential for vacation this area presented. By 1850 Nags Head was a prospering resort with the building of a massive hotel called the Nags Head Hotel. This was the beginning of a booming tourist industry we still can enjoy today (Stick 55-58).

The thriving tourist industry, along with commercial fishing, has been the counties primary income source. Until the 1940's commercial fishing was the most prominent industry in Dare County; even now it is second only to tourism. The primary animals caught in this area for commercial use throughout the years have been whales, porpoises, turtles, terrapins, oysters, clams, shrimp, crabs, and seaweed. Like so many other professions large fishing operations are taking over the small fisherman which used to consist of one to four men. The largest cash product in this industry is crab (Stick 42-46).

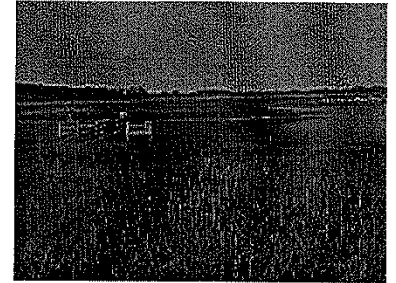
As stated the first largest industry in Dare County is tourism. There are many obvious reasons for this, but the most prominent are the Wright Brothers National Memorial, the lighthouses, The Lost Colony production, Jockey's Ridge, the wildlife, the areas calm and laid back lifestyle, and of course the beaches.



Without a doubt this areas claim to fame is the Wright Brothers National Memorial at Kitty Hawk. This memorial was constructed in honor of Orville and Wilbur Wright. Two brothers from Dayton, Ohio who are responsible for the first ever successful human flight conducted in Kitty Hawk, North Carolina on December 17, 1903 (Stick 38-42). Another famous tourist attraction to this area is the two lighthouses along the coast: Bodie, and Cape Hatteras. Before the construction of the seven North Carolina lighthouses hundreds of unknowing ships were sunk as they approached the dark coast of North Carolina.<sup>1</sup> After the government passed an act to light up the coast, the lighthouse constructions began. The first Cape Hatteras light was constructed in

1802, Bodie Island light was later built in 1872 and stands at 150 feet. They eventually had to replace the original Cape Hatteras light. Its replacement stands at 208 feet making it the largest in the nation (Hause).<sup>2</sup> Jockey's Ridge with its 140 feet sand dunes has been attracting Dare County tourists since the start of the tourist industry in this area. The Lost Colony production in Manteo is credited for bringing the tourist industry to Roanoke Island. Started in 1937 by Paul Green at the Waterside Theater at Fort Raleigh, The Lost Colony is an outdoor drama and is the longest running of this kind in America (*Outer Banks Attractions*).<sup>3</sup> The above mentioned are just a few of the reasons that people have been choosing Dare County as a vacation spot for over 160 years.

Tourism in Dare County has brought with it not only economic development, but also tremendous strain on the ecology of the area. In an effort to preserve the natural resources of the area while also protecting the important tourist industry Dare County initiated the first ever national seashore entitled the Cape Hatteras National Seashore. This area includes south Nags Head all the way to Ocracoke Inlet. It extends 75 miles, 30,000 acres, and forever dedicated to preserving the area's natural state (*Cape Hatteras*). Other areas set aside to protect the ecology of Dare County are: Nags Head woods-a maritime forest extending 640 acres protected by the Nature Conservancy, Jockey's Ridge State Park-a 140 foot sand dune that extends 400 acres, Pea Island National Wildlife Refuge-hunting is off limits in this 6000 acre area that protects 265 species of birds along with all the other wildlife that makes this place home, and Buxton Woods Reserve-a maritime forest that is created to be the largest of its kind in the state at 500 acres (*Outer Banks Attractions*). These, along with other efforts around the county make Dare County home to one third of the National Parks Services in North Carolina. These areas with their wonderful hiking trails, camp sites, historical sites, bird watching, and beaches to name a few, attract the vacationers while protecting the ecology (*Cape Hatteras*).



Dare County's beauty has been attracting people since the 1500's when Sir Walter Raleigh sent a colony to Roanoke Island to settle there. Since then it's well known history and famous laid back lifestyle has brought vacationers to this site year round, year after year. All of this has caused great strain to this beautiful area causing the people who live and love this area to initiate the National Seashore preserve to help maintain the original beauty and wildlife. By combining the areas largest economic means with its history while minimizing the environmental effects has kept Dare County a thriving community.

### Interesting Tidbits from Dare County

- The lighthouses we enjoy today come with a history of how they have remained constructed on soft sand for over 100 years. Six by twelve timbers were inserted into the ground in an octagon. After a deep hole was made it was then filled with seawater, which is a practiced that has preserved the timbers all this time. Granite was then placed over the octagon, and the bricks were laid one by until the circle tower was erected (Hause).
- In 1902 Reginald Fessenden built two fifty-foot transmission towers, one on Roanoke Island and one in Buxton. These towers were the first to transmit musical notes and eventually human voice over forty five feet. Ten years later these towers picked up the one and only signal received on land from a luxury liner way up north. The station then contacted New York, but was met with complaints for tying up the lines because "everyone knew the Titanic was unsinkable" (*Coastal Guide*).
- The legend of Nags Head's name comes from land pirates tying lanterns on the necks of hoses and allowing them to parade the coast. The approaching ship's captains would mistake this for ship's lights and come too close to the shore resulting in grounding of the ship. The land pirates would then steal the ship's cargo (*Coastal Guide*).

### Notes

<sup>1</sup> For further information on the shipwrecks off the coast of North Carolina see *Graveyards of the Atlantic: Shipwrecks of the North Carolina Coast*, a book by Davis Stick.

<sup>2</sup> To find interesting stories about lighthouse keepers see *Lighthouse Families*, a book by Cheryl Shelton-Roberts.

<sup>3</sup> Dates and times of the production of *The Lost Colony* can be found at <http://www.outerbanks.com/lostcolony/lostcol2.htm>

### Works Cited

*Coastal Guide*. 2000. <http://www.coastalguide.com/packet/>.

Hause, Eric. *NC Lighthouses: Sentinels of the Atlantic*. 26 Nov. 2000. <http://www.coastalguide.com/packet/lighthouses01.htm>.

*Outer Banks Attractions*. 2000. <http://www.outerbanks.com/attractions.htm>.

Stick, David. *Dare County: A History*. Raleigh, NC: North Carolina State Department of Archives and History, 1970.

*Welcome to Dare County . . . Land of Beginnings*. 10 July 2000. <http://www.co.dare.nc.us/>.

---

[County Profiles Home](#)

[NCST 2000](#)

[NC Studies Home](#)

---

Created November 28, 2000  
Updated May 16, 2003

262 ★



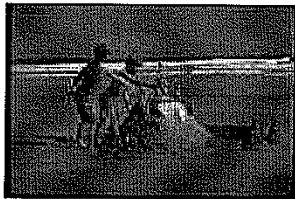
# Dare County

## Tourism

The Outer Banks of North Carolina are legendary for its beautiful beaches. Soft, shimmering sand and blue-green waters are the backdrops for sun-kissed, leisure-filled days. Getaways here are memorable, and visitors return again and again to bask in the area's easygoing style and southern charm.


But, we're not just another pretty place. In addition to our pristine beaches, the Outer Banks offers a diverse array of historical attractions, exciting activities and special events... as limitless as our grains of sand. Experience the magic of the Wright Brothers' first flight; stroll through the lovely Elizabethan Garden; glide through the marshes on a kayak; fish in world-class waters; fly a kite from atop Jockey's Ridge; view the regal Cape Hatteras Lighthouse, the tallest on the American coast; or simply relax with a stroll along the shore searching for the perfect seashell. While on the Outer Banks, visitors will discover this and so much more.

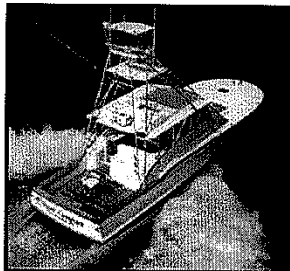
For more information, contact the [Outer Banks Visitors Bureau](#).



## Economic Development

Dare County, part of North Carolina's Outer Banks, continues to experience rapid growth. The center of this growth is tourism and its ability to attract persons to a leisurely lifestyle.

Another mainstay for the Dare County economy is the custom boat building industry. Carolina custom boats are considered the best, and companies such as Davis Boatworks and Spencer Yachts are leaders in the custom boat building industry.



Wanchese Seafood Industrial Park, located in Dare County, was established to promote and support the state's seafood industry. The state leases sites in the park to companies whose products are seafood or marine related.

For more information on economic development opportunities in Dare County, visit [www.outerbankschamber.com](http://www.outerbankschamber.com).



[< BACK](#)

**North Carolina's Northeast Partnership**  
119 West Water Street  
Edenton, NC 27932  
888.872.8562  
Fax: 252.482.3366  
E-Mail: [info@ncnortheast.com](mailto:info@ncnortheast.com)

Welcome to Dare County ... *land of beginnings*    Home | Directory | Contact Us | Comments | Links  
 Board of Commissioners | Financial Info | Legals | Forms | Employment | Calendar | LaserFiche | Services

Public Information Files    Text Menu    Departments

**Occupancy Tax**

Home

Get Acrobat Reader

Food & Beverage | Land Transfer | Listings | Motor Vehicle | View/Pay your Tax Bill

Links: [Occupancy Tax Report](#)

The Dare County **Occupancy Tax Rate** of 5% consisting of a:

- 3% Room Occupancy Tax
- 1% Room Occupancy and Tourism Development Tax
- 1% Room Occupancy and Tourism Development Tax for Beach Nourishment

#### **Authorization**

- 3% - House Bill 532, 1985 Session, General Assembly of North Carolina Effective July 1, 1985
- 1% - House Bill 225, 1991 Session, General Assembly of North Carolina Effective January 1, 1992
- 1% - Senate Bill 92, 2001 Session, General Assembly of North Carolina Effective September 1, 2002

#### **Use of Tax**

- **County & Municipalities:**  
Must be used only for tourist-related purposes, including construction and maintenance of public facilities and buildings, garbage, refuse, solid waste collection and disposal, police protection and emergency services.
- **Dare County Tourism Board:**  
First eligible expense is the cost of an annual audit. Of the remainder: 75% must be used for the cost of administration and to promote tourism. The Tourism Board's expenditures may include:
  - (i) advertising to promote less than peak season events and programs
  - (ii) marketing research,
  - (iii) a mail and telephone inquiry response program
  - (iv) welcoming and hospitality functions; and 25% must be used for services or programs needed due to the impact of tourism on the county.
- **Beach Nourishment:**  
Must be used for the placement of sand, from other sand sources, the planting of vegetation, and the building of structures that are in conformity with NC CAMA, such as sand fences and dunes, on beaches of the Atlantic Ocean of North Carolina for the purpose of widening the beach to benefit public recreational use and mitigating damage and erosion from storms to inland property.

***Distribution of Tax***

3% Occupancy Tax, net proceeds to:

- 68% to named towns (Duck, Kill Devil Hills, Kitty Hawk, Manteo, Nags Head & Southern Shores) in proportion to the amount of ad valorem taxes levied by each town for the preceding fiscal year; and
- 32% to Dare County.

1% Occupancy and Tourism Development Tax, net proceeds to the Dare County Tourism Board.

1% Occupancy and Tourism Development Tax, net proceeds to Dare County for beach nourishment.

**Administrator**, Alice Creef [alicec@darenc.com](mailto:alicec@darenc.com)

Dare County Justice Center  
962 Marshall C Collins Drive  
Manteo NC 27954

**Phone:** (252)475-5964

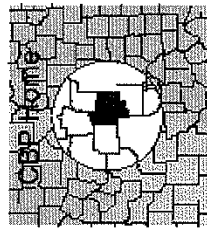
**Fax:** (252) 475-1699

[Site Index](#) | [Homeland Security](#) | [Privacy Statement](#) | [Accessibility](#)

**U.S. Census Bureau**

**2003 County Business  
Patterns (NAICS)**



[CenStats](#)

Dare, NC  
Major Industry

To see a different year, select one

0033215

Industry Code	Industry Code Description	Number of Employees for week including March 12	Payroll (\$1,000)		Total Establishments
			1st Quarter	Annual	
-----	Total	13,820	68,655	359,935	1,938
11----	Forestry, fishing, hunting, and agriculture support	0-19	0	0	7
22----	Utilities	20-99	0	0	2
23----	Construction	1,511	9,960	47,687	326
31----	Manufacturing	469	3,058	14,839	41
42----	Wholesale trade	463	2,766	12,174	49
44----	Retail trade	3,240	14,368	74,760	445
48----	Transportation & warehousing	139	730	3,845	57
51----	Information	192	1,353	6,036	27

0033216

Detail	Compare	52----	Finance & insurance	408	4,935	23,169	72
Detail	Compare	53----	Real estate & rental & leasing	1,226	8,980	41,148	156
Detail	Compare	54----	Professional, scientific & technical services	548	3,686	17,300	116
Detail	Compare	55----	Management of companies & enterprises	20-99	0	0	2
Detail	Compare	56----	Admin, support, waste mgt, remediation services	433	1,986	11,602	90
Detail	Compare	61----	Educational services	20-99	0	0	9
Detail	Compare	62----	Health care and social assistance	578	4,247	20,748	52
Detail	Compare	71----	Arts, entertainment & recreation	319	1,209	7,767	60
Detail	Compare	72----	Accommodation & food services	3,633	8,550	65,932	294
Detail	Compare	81----	Other services (except public administration)	577	2,285	10,173	122
Detail	Compare	99----	Unclassified establishments	0-19	0	0	11

Detail	Compare	Industry Code	Industry Code Description	Total Estabs	Number of Establishments by Employment-size class									
					1-4	5-9	10-19	20-49	50-99	100-249	250-499	500-999	1000 or more	
Detail	Compare	-----	Total	1,938	1,193	385	208	109	34	9	0	0	0	0
Detail	Compare	11----	Forestry, fishing, hunting, and agriculture support	7	7	0	0	0	0	0	0	0	0	0
Detail	Compare	22----	Utilities	2	0	1	0	1	0	0	0	0	0	0
Detail	Compare	23----	Construction	326	220	74	22	7	3	0	0	0	0	0
Detail	Compare	31----	Manufacturing	41	20	5	9	5	2	0	0	0	0	0
Detail	Compare	42----	Wholesale trade	49	27	15	4	1	1	1	0	0	0	0
Detail	Compare	44----	Retail trade	445	256	105	51	22	8	3	0	0	0	0
Detail	Compare	48----	Transportation & warehousing	57	52	3	0	2	0	0	0	0	0	0



Detail	Compare	51----	Information	27	13	7	6	1	0	0	0	0
Detail	Compare	52----	Finance & insurance	72	40	18	12	2	0	0	0	0
Detail	Compare	53----	Real estate & rental & leasing	156	106	23	6	14	7	0	0	0
Detail	Compare	54----	Professional, scientific & technical services	116	74	22	18	2	0	0	0	0
Detail	Compare	55----	Management of companies & enterprises	2	1	0	0	1	0	0	0	0
Detail	Compare	56----	Admin, support, waste mgt, remediation services	90	61	18	9	1	1	0	0	0
Detail	Compare	61----	Educational services	9	8	1	0	0	0	0	0	0
Detail	Compare	62----	Health care and social assistance	52	25	13	10	2	1	1	0	0
Detail	Compare	71----	Arts, entertainment & recreation	60	44	10	3	1	2	0	0	0
Detail	Compare	72----	Accommodation & food services	294	152	40	45	44	9	4	0	0
Detail	Compare	81----	Other services (except public administration)	122	76	30	13	3	0	0	0	0
Detail	Compare	99----	Unclassified establishments	11	11	0	0	0	0	0	0	0

Save as text file

Save as csv file

Data from the County Business Patterns CD-ROM  
 Data from the ZIP Code Business Patterns CD-ROM

For information on businesses with no paid employees, see Nonemployer Statistics

Change Geographic Area

Technical Support   
 TechSupp@census.gov  
 301-763-7710 Voice  
 301-457-1296 Fax

Census Bureau Links: Home · Search · Subjects A-Z · FAQs · Data Tools · Catalog · Census 2000 · Quality · Privacy Policy · FYI · Contact Us

**US CENSUS BUREAU**  
*Helping You Make Informed Decisions*

**H1. HOUSING UNITS [1] - Universe: Housing units**Data Set: Census 2000 Summary File 3 (SF 3) - Sample DataNOTE: Data based on a sample except in P3, P4, H3, and H4. For information on confidentiality protection, sampling error, nonsampling error, definitions, and count corrections see <http://factfinder.census.gov/home/en/datanotes/expsf3.htm>.

	Dare County, North Carolina	Hyde County, North Carolina
Total	26,671	3,302

U.S. Census Bureau  
Census 2000**H3. 100-PERCENT COUNT OF HOUSING UNITS [1] - Universe: Housing units**Data Set: Census 2000 Summary File 3 (SF 3) - Sample DataNOTE: Data based on a sample except in P3, P4, H3, and H4. For information on confidentiality protection, sampling error, nonsampling error, definitions, and count corrections see <http://factfinder.census.gov/home/en/datanotes/expsf3.htm>.

	Dare County, North Carolina	Hyde County, North Carolina
Total	26,671	3,302

Data Note  
U.S. Census Bureau  
Census 2000**H5. URBAN AND RURAL [7] - Universe: Housing units**Data Set: Census 2000 Summary File 3 (SF 3) - Sample DataNOTE: Data based on a sample except in P3, P4, H3, and H4. For information on confidentiality protection, sampling error, nonsampling error, definitions, and count corrections see <http://factfinder.census.gov/home/en/datanotes/expsf3.htm>.

	Dare County, North Carolina	Hyde County, North Carolina
Total:	26,671	3,302
Urban:	14,723	0
Inside urbanized areas	0	0
Inside urban clusters	14,723	0
Rural:	11,948	3,302
Farm	3	37
Nonfarm	11,945	3,265

U.S. Census Bureau  
Census 2000**H6. OCCUPANCY STATUS [3] - Universe: Housing units**Data Set: Census 2000 Summary File 3 (SF 3) - Sample DataNOTE: Data based on a sample except in P3, P4, H3, and H4. For information on confidentiality protection, sampling error, nonsampling error, definitions, and count corrections see <http://factfinder.census.gov/home/en/datanotes/expsf3.htm>.

	Dare County, North Carolina	Hyde County, North Carolina
Total:	26,671	3,302
Occupied	12,690	2,185
Vacant	13,981	1,117

U.S. Census Bureau  
Census 2000

**H8. VACANCY STATUS [7] - Universe: Vacant housing units**  
 Data Set: Census 2000 Summary File 3 (SF 3) - Sample Data

NOTE: Data based on a sample except in P3, P4, H3, and H4. For information on confidentiality protection, sampling error, nonsampling error, definitions, and count corrections see <http://factfinder.census.gov/home/en/datanotes/expsf3.htm>.

	Dare County, North Carolina	Hyde County, North Carolina
Total:	13,981	1,117
For rent	256	90
For sale only	118	37
Rented or sold, not occupied	51	53
For seasonal, recreational, or occasional use	13,445	855
For migrant workers	7	37
Other vacant	104	45

U.S. Census Bureau  
 Census 2000

**H74. VALUE FOR SPECIFIED OWNER-OCCUPIED HOUSING UNITS [25] - Universe: Specified owner-occupied housing units**  
 Data Set: Census 2000 Summary File 3 (SF 3) - Sample Data

NOTE: Data based on a sample except in P3, P4, H3, and H4. For information on confidentiality protection, sampling error, nonsampling error, definitions, and count corrections see <http://factfinder.census.gov/home/en/datanotes/expsf3.htm>.

	Dare County, North Carolina	Hyde County, North Carolina
Total:	7,933	1,166
Less than \$10,000	7	15
\$10,000 to \$14,999	8	49
\$15,000 to \$19,999	0	9
\$20,000 to \$24,999	10	56
\$25,000 to \$29,999	10	25
\$30,000 to \$34,999	27	49
\$35,000 to \$39,999	21	78
\$40,000 to \$49,999	42	80
\$50,000 to \$59,999	122	87
\$60,000 to \$69,999	165	86
\$70,000 to \$79,999	332	75
\$80,000 to \$89,999	627	111
\$90,000 to \$99,999	659	55
\$100,000 to \$124,999	1,352	97
\$125,000 to \$149,999	1,201	66
\$150,000 to \$174,999	866	57
\$175,000 to \$199,999	568	67
\$200,000 to \$249,999	714	47
\$250,000 to \$299,999	420	46
\$300,000 to \$399,999	443	11
\$400,000 to \$499,999	151	0
\$500,000 to \$749,999	115	0
\$750,000 to \$999,999	30	0
\$1,000,000 or more	43	0

U.S. Census Bureau  
 Census 2000

**H85. MEDIAN VALUE (DOLLARS) FOR ALL OWNER-OCCUPIED HOUSING UNITS [1] - Universe: Owner-occupied housing units**  
 Data Set: Census 2000 Summary File 3 (SF 3) - Sample Data

NOTE: Data based on a sample except in P3, P4, H3, and H4. For information on confidentiality protection, sampling error,

[http://factfinder.census.gov/servlet/DTTable?\\_bm=y&-state=dt&-context=dt&-ds\\_name=DEC\\_20...](http://factfinder.census.gov/servlet/DTTable?_bm=y&-state=dt&-context=dt&-ds_name=DEC_20...) 10/19/2005

STATS Indiana IBRC

[A to Z](#) [About the Profile](#) [Email](#)



Select State  Select County

Compare Within  
U.S.  State



[Indiana IN Depth](#)  
[City/Co. Finder](#)  
[Range Finder](#)  
[Maps](#)

Single County | Side by Side

Overview Population Housing Income Labor BLS BEA All

Income and Poverty for North Carolina

STATS Indiana  
from the IBRC

Median Income	Number	Rank in U.S.	Percent of U.S.
Median household income in 2002	\$38,194	37	90.1%
Median household income in 1997 (adj. for inflation)	\$39,589	29	95.4%
5-year percent change 1997 to 2002	-3.5%	51	

Source: US Census Bureau

Per Capita Personal Income	Number	Rank in U.S.	Percent of U.S.
Per capita income - 2003	\$28,071	38	89.2%
Per capita income - 1993 (adj. for inflation)	\$24,926	31	91.7%
Per capita income - 1983 (adj. for inflation)	\$19,447	41	83.4%
Per capita income - 1973 (adj. for inflation)	\$18,023	40	83.1%
10-year % change	12.6%	44	
20-year % change	44.3%	14	
30-year % change	55.8%	16	

Source: US Bureau of Economic Analysis

Personal Income in 2003 (\$000)	Number	5-Year % Change (adj*)	Rank in % Change
<b>Total Earnings by Place of Work</b>	\$183,272,504	10.4%	41
Minus: Contributions for government social insurance	\$20,992,800	11.4%	23
Personal contributions for government social insurance	\$10,727,698	9.2%	37
Employer contributions for government social insurance	\$10,265,102	13.8%	7
Plus: Adjustment for residence	-\$793,040	-0.2%	46
<b>Equals: Net Earnings by Place of Residence</b>	\$161,486,664	10.4%	39
Plus: Dividends, rent, interest	\$37,544,357	-11.1%	44
Plus: Transfer payments	\$37,360,220	26.3%	8
<b>Equals: Personal Income by Place of Residence</b>	\$236,391,241	8.4%	40

Source: US Bureau of Economic Analysis (\*adj = Adjusted for Inflation)

Poverty Estimates	Number	Rank in U.S.	5-Year % Change	Rank in % Change
Poverty rate in 2002	12.9	18	--	--
In 1997	12.6	21	2.4%	4
Poverty rate for children under 18 in 2002	17.4	19	--	--
In 1997	18.6	20	-6.5%	7

Source: US Census Bureau

USA Counties IN Profile provides current federal statistics on a variety of demographic and economic indicators. Read "About the Profile" for the best understanding of the data, ranks and computations. This profile is produced by **STATS Indiana**, a web service of the Indiana Business Research Center at the Indiana University Kelley School of Business. Major support for this effort is provided by the State of Indiana through the [Indiana Economic Development Corporation](#).  
Updated: September 30, 2005 at 01:24

nonsampling error, definitions, and count corrections see <http://factfinder.census.gov/home/en/datanotes/expsf3.htm>.

	Dare County, North Carolina	Hyde County, North Carolina
Median value	128,600	60,100

U.S. Census Bureau  
Census 2000

**Standard Error/Variance documentation for this dataset:**

[Accuracy of the Data: Census 2000 Summary File 3 \(SF 3\) - Sample Data \(PDF 141.5KB\)](#)

STATS Indiana IBRC

A to Z About the Profile Email



Select State  Select County

Compare Within  
U.S.  State



Indiana IN Depth  
City/Co. Finder  
Range Finder  
Maps

Single County | Side by Side

Overview Population Housing Income Labor BLS BEA All

Income and Poverty for the United States

STATS Indiana  
from the IBRC

Median Income	Number
Median household income in 2002	\$42,409
Median household income in 1997 (adj. for inflation)	\$41,478
5-year percent change 1997 to 2002	2.2%

Source: US Census Bureau

Per Capita Personal Income	Number
Per capita income - 2003	\$31,472
Per capita income - 1993 (adj. for inflation)	\$27,181
Per capita income - 1983 (adj. for inflation)	\$23,310
Per capita income - 1973 (adj. for inflation)	\$21,678
10-year % change	15.8%
20-year % change	35.0%
30-year % change	45.2%

Source: US Bureau of Economic Analysis

Personal Income in 2003 (\$000)	Number	5-Year % Change (*adj)
<b>Total Earnings by Place of Work</b>	\$7,113,751,000	11.7%
Minus: Contributions for government social insurance	\$771,715,000	9.7%
Personal contributions for government social insurance	\$395,911,000	10.7%
Employer contributions for government social insurance	\$375,804,000	8.6%
Plus: Adjustment for residence	-\$1,194,000	3.5%
<b>Equals: Net Earnings by Place of Residence</b>	\$6,340,842,000	12.0%
Plus: Dividends, rent, interest	\$1,475,529,000	-7.9%
Plus: Transfer payments	\$1,335,323,000	20.9%
<b>Equals: Personal Income by Place of Residence</b>	\$9,151,694,000	9.3%

Source: US Bureau of Economic Analysis (\*adj = Adjusted for Inflation)

Poverty Estimates	Number	5-Year % Change
Poverty rate in 2002	12.1	--
In 1997	13.3	-9.0%
Poverty rate for children under 18 in 2002	16.7	--
In 1997	19.9	-16.1%

Source: US Census Bureau

USA Counties IN Profile provides current federal statistics on a select variety of demographic and economic indicators and are Updated through the year as new data are released. Read "About the Profile" for the best understanding of the data, ranks and computations.

This profile is a component of **STATS Indiana**, a web service of the Indiana Business Research Center at the Indiana University Kelley School of Business. Major support for this effort is provided by the State of Indiana through the [Indiana Economic Development Corporation](#).

Updated: September 29, 2005 at 16:32

STATS Indiana IBRC

[A to Z](#) [About the Profile](#) [Email](#)



Select State  Select County

Compare Within  
 U.S.  State



[Indiana IN Depth](#)  
[City/Co. Finder](#)  
[Range Finder](#)  
[Maps](#)

Single County | [Side by Side](#)

Overview Population Housing Income Labor BLS BEA All

Overview for Hyde County, NC

**STATS Indiana**  
 from the IBRC



**Hyde County** is one of about 3,141 counties and county equivalents in the United States. It has 612.8 sq. miles in land area and a population density of 9.0 per square mile. In the last three decades of the 1900s its population grew by 4.6%. On the 2000 census form, 99.2% of the population reported only one race, with 35.1% of these reporting African-American. The population of this county is 2.2% Hispanic (of any race). The average household size is 2.36 persons compared to an average family size of 2.94 persons.


In 2004 Public administration was the largest of 20 major sectors. It had an average wage per job of \$28,153. Per capita income grew by 11.5% between 1993 and 2003 (adjusted for inflation).

People & Income Overview (By Place of Residence)	Value	Rank in U.S.	Industry Overview (2004) (By Place of Work)	Value	Rank in U.S.
Population (2004)	5,521	2803	Covered Employment	2,118	2606
Growth (%) since 1990	2.0%	2184	Avg wage per job	\$21,807	2872
Households (2000)	2,185	2804	Manufacturing - % all jobs in County	4.3%	2386
Labor Force (persons) (2004)	2,807	2781	Avg wage per job	\$13,994	2805
Unemployment Rate (2004)	6.9	612	Transportation & Warehousing - % all jobs in County	0.8%	2404
Per Capita Personal Income (2003)	\$20,564	2526	Avg wage per job	\$35,953	1282
Median Household Income (2002)	\$26,633	2792	Health Care, Social Assist. - % all jobs in County	5.0%	1831
Poverty Rate (2002)	21.9	262	Avg wage per job	\$21,134	1748
H.S. Diploma or More - % of Adults 25+ (2000)	68.4	2,601	Finance and Insurance - % all jobs in County	D	N/A
Bachelor's Deg. or More - % of Adults 25+ (2000)	10.6	2,517	Avg wage per job	D	N/A

**USA Counties IN Profile** provides current federal statistics on a variety of demographic and economic indicators. Read "About the Profile" for the best understanding of the data, ranks and computations. This profile is produced by **STATS Indiana**, a web service of the Indiana Business Research Center at the Indiana University Kelley School of Business. Major support for this effort is provided by the State of Indiana through the [Indiana Economic Development Corporation](#).  
 Updated: September 30, 2005 at 01:38




**STATS Indiana IBRC** A to Z About the Profile Email



Select State  Select County

Compare Within  
U.S.  State



Indiana IN Depth  
City/Co. Finder  
Range Finder  
Maps

Single County | Side by Side

Overview Population Housing Income Labor BLS BEA All

### Population for Hyde County, NC

**STATS Indiana**  
from the IBRC

Population Over Time	Number	Rank in U.S.	Percent of U.S.	U.S.
2004	5,521	2803	<0.01%	293,655,404
2000	5,826	2801	<0.01%	281,421,906
1990	5,411	2807	<0.01%	248,790,925
1980	5,873	2787	<0.01%	226,542,250
1970	5,571	2763	<0.01%	203,302,037
1990 to 2000 % change	7.7%	1654		13.1%
1980 to 2000 % change	-0.8%	2164		24.2%
1970 to 2000 % change	4.6%	2214		38.4%

Source: US Census Bureau

Components of Population Change in 2004	Number	Rank in U.S.	Percent of U.S.	U.S.
Net Domestic Migration (chg 2003/2004)	-25	1834		
Net International Migration (chg 2003/2004)	4	2205	<0.01%	1,221,013
Natural Increase (births minus deaths)	-4	2275	<0.01%	1,645,415
Births	62	2787	<0.01%	4,099,399
Deaths	66	2751	<0.01%	2,453,984

Source: US Census Bureau

Population Estimates by Age in 2004	Number	Rank in U.S.	Pct Dist. in County	Pct Dist. in U.S.
Preschool (0 to 4)	283	2823	5.1%	6.8%
School Age (5 to 17)	823	2854	14.9%	18.1%
College Age (18 to 24)	489	2840	8.9%	10.0%
Young Adult (25 to 44)	1,526	2720	27.6%	28.7%
Older Adult (45 to 64)	1,478	2788	26.8%	24.1%
Older (65 plus)	922	2788	16.7%	12.4%
Median Age	40.9	789		Median Age = 36.0

Sources: US Census Bureau; Median age calculated by the IBRC.

Population Estimates by Race and Hispanic Origin in 2004	Number	Rank in U.S.	Pct Dist. in County	Pct Dist. in U.S.
American Ind. or Alaskan Native Alone	20	2736	0.4%	1.0%
Asian Alone	25	2419	0.5%	4.2%
Black Alone	1,965	1196	35.6%	12.8%
Native Hawaiian and Other Pac. Isl. Alone	0	2138	0.0%	0.2%
White Alone	3,510	2890	63.6%	80.4%
Two or More Race Groups	1	3053	0.0%	1.5%
Hispanic or Latino (can be of any race)				
Non-Hispanic or Latino	5,393	2770	97.7%	85.9%
Hispanic or Latino	128	2567	2.3%	14.1%

Source: US Census Bureau

Hispanic or Latino Population in 2000 (can be of any race)	Number	Rank in U.S.	Pct Dist. in County	Pct Dist. in U.S.
Hispanic	131	2466	2.2%	12.5%
Mexican	91	2254	1.6%	7.3%
Cuban	8	1473	0.1%	0.4%

STATS Indiana IBRC

[A to Z](#) [About the Profile](#) [Email](#)



Select State  Select County

Compare Within  
U.S.  State



[Indiana IN Depth](#)  
[City/Co. Finder](#)  
[Range Finder](#)  
[Maps](#)

Single County | [Side by Side](#)

Overview    Population    Housing    Income    Labor    BLS    BEA    All

Households and Housing for Hyde County, NC

**STATS Indiana**  
from the IBRC

Households in 2000	Number	Rank in U.S.	Pct All Hhlds in County	Pct All Hhlds in U.S.
Total Households	2,185	2804	100.0%	100.0%
Family Households	1,434	2826	65.6%	68.1%
Married with Children	423	2868	19.4%	23.5%
Married without Children	641	2838	29.3%	28.1%
Single Parents	154	2785	7.0%	9.2%
Other	216	2402	9.9%	7.1%
Non-family Households	751	2723	34.4%	31.9%
Living Alone	668	2714	30.6%	25.8%
Average Household Size	2.36	2684		
Average Family Household Size	2.94	2203		

Source: US Census Bureau

Housing Units in 2000	Number	Rank in U.S.	Pct All HU in County	Pct All HU in U.S.
2004 Housing Units (estimate)	3,392	2678		
Total Housing Units	3,302	2675	100.0%	100.0%
Occupied	2,185	2804	66.2%	91.0%
Owner Occupied	1,713	2777	51.9%	60.2%
Renter Occupied	472	2817	14.3%	30.8%
Vacant	1,117	1761	33.8%	9.0%
For seasonal or recreational use	666	917	20.2%	3.1%


Source: US Census Bureau

Residential Building Permits in 2004	Units	Pct Dist. in County	Pct Dist. in U.S.	Cost (\$000)
Total Permits Filed	24	100.0%	100.0%	\$3,247
Single Family	24	100.0%	78.0%	\$3,247
Two Family	0	0.0%	2.1%	\$0
Three & Four Family	0	0.0%	2.3%	\$0
Five Families and More	0	0.0%	17.6%	\$0

Source: US Census Bureau


USA Counties IN Profile provides current federal statistics on a variety of demographic and economic indicators. Read "About the Profile" for the best understanding of the data, ranks and computations. This profile is produced by **STATS Indiana**, a web service of the Indiana Business Research Center at the Indiana University Kelley School of Business. Major support for this effort is provided by the State of Indiana through the [Indiana Economic Development Corporation](#).  
Updated: September 30, 2005 at 01:38

**STATS Indiana IBRC**
A to Z About the Profile Email



Select State  Select County

Compare Within  
U.S.  State



[Indiana IN Depth](#)  
[City/Co. Finder](#)  
[Range Finder](#)  
[Maps](#)

Single County | [Side by Side](#)

Overview    Population    Housing    Income    Labor    BLS    BEA    All

### Income and Poverty for Hyde County, NC

STATS Indiana  
from the IBRC

Median Income	Number	Rank in U.S.	Percent of U.S.
Median household income in 2002	\$26,633	2792	62.8%
Median household income in 1997 (adj. for inflation)	\$26,417	2847	63.7%
5-year percent change 1997 to 2002	0.8%	928	

Source: US Census Bureau

Per Capita Personal Income	Number	Rank in U.S.	Percent of U.S.
Per capita income - 2003	\$20,564	2526	65.3%
Per capita income - 1993 (adj. for inflation)	\$18,438	2441	67.8%
Per capita income - 1983 (adj. for inflation)	\$12,753	2951	54.7%
Per capita income - 1973 (adj. for inflation)	\$15,068	2390	69.5%
10-year % change	11.5%	1998	
20-year % change	61.3%	169	
30-year % change	36.5%	1608	

Source: US Bureau of Economic Analysis

Personal Income in 2003 (\$000)	Number	5-Year % Change (adj*)	Rank in % Change
<b>Total Earnings by Place of Work</b>	\$71,394	-1.8%	2323
Minus: Contributions for government social insurance	\$7,852	3.8%	1773
Personal contributions for government social insurance	\$4,318	-2.1%	2474
Employer contributions for government social insurance	\$3,534	12.0%	903
Plus: Adjustment for residence	-\$3,043	108.3%	165
<b>Equals: Net Earnings by Place of Residence</b>	\$60,499	-5.0%	2761
Plus: Dividends, rent, interest	\$22,243	-17.8%	2542
Plus: Transfer payments	\$31,247	7.4%	2895
<b>Equals: Personal Income by Place of Residence</b>	\$113,989	-4.9%	2883

Source: US Bureau of Economic Analysis (\*adj = Adjusted for Inflation)

Poverty Estimates	Number	Rank in U.S.	5-Year % Change	Rank in % Change
Poverty rate in 2002	21.9	262	--	--
	In 1997 24.8	246	-11.7%	2002
Poverty rate for children under 18 in 2002	25.1	559	--	--
	In 1997 32.6	331	-23.0%	2325

Source: US Census Bureau


**USA Counties IN Profile** provides current federal statistics on a variety of demographic and economic indicators. Read "About the Profile" for the best understanding of the data, ranks and computations. This profile is produced by **STATS Indiana**, a web service of the Indiana Business Research Center at the Indiana University Kelley School of Business. Major support for this effort is provided by the State of Indiana through the [Indiana Economic Development Corporation](#).

Updated: September 30, 2005 at 01:38

http://www.stats.indiana.edu/uspr/a/us\_profile\_frame.html


10/13/2005

**STATS Indiana IBRC** A to Z About the Profile Email



Select State  Select County

Compare Within  
U.S.  State



[Indiana IN Depth](#)  
[City/Co. Finder](#)  
[Range Finder](#)  
[Maps](#)

Single County | Side by Side

Overview    Population    Housing    Income    Labor    BLS    BEA    All

### Labor Force for Hyde County, NC

*STATS Indiana*  
from the IBRC

Labor Force Annual Averages in 2004	Number	% of U.S.	U.S.	Rank in U.S.
Total Labor Force	2,807	<0.01%	147,401,000	2781
5-year % change	-12.3%	-	5.8%	2936
10-year % change	0.1%	-	12.5%	2299
Employed	2,613	<0.01%	139,252,000	2785
5-year % change	-12.7%	-	4.3%	2934
10-year % change	3.6%	-	13.2%	2013
Unemployed	194	<0.01%	8,149,000	2629
5-year % change	-6.3%	-	38.6%	2605
10-year % change	-31.7%	-	1.9%	2885
Unemployment Rate	6.9	125.45%	5.5	612
5-year % change	6.2%	-	31.0%	2179
10-year % change	-31.7%	-	-9.8%	2734

Source: US Bureau of Labor Statistics

Educational Attainment: Census 2000	Number	Percent of Population 25+	Rank of % in U.S.	U.S. % of Population 25+
Total Population 25 and Older	4,190	100.0%		100.0%
Less Than 9th Grade	546	13.0%	594	7.5%
9th to 12th, No Diploma	780	18.6%	482	12.1%
High School Graduate (incl. equiv.)	1,521	36.3%	1,266	28.6%
Some College, No Degree	640	15.3%	2,753	21.0%
Associate Degree	260	6.2%	1,211	6.3%
Bachelor's Degree	315	7.5%	2,335	15.5%
Graduate or Professional Degree	128	3.1%	2,667	8.9%

Source: US Census Bureau

Workers Living in County in 2000	Number	Rank in U.S.	Pct Dist. in County	Rank of Pct Dist.
Total	2,194	2,831	100.0%	
Working in County	1,918	2,630	87.4%	493
Working Elsewhere	276	2,924	12.6%	2,643

Source: US Census Bureau (Includes only domestic commuting for workers over 16 years old.)

People Working in County in 2000	Number	Rank in U.S.	Pct Dist. in County	Rank of Pct Dist.
Total	2,373	2,673	100.0%	
Living in County	1,918	2,630	80.8%	1,185
Living Elsewhere	455	2,638	19.2%	1,943

Source: US Census Bureau (Includes only domestic commuting for workers over 16 years old.)

Commuting Flows in 2000	Number	Rank in U.S.	Pct Dist.
Gross Flow (Living Elsewhere + Working Elsewhere)	731	2,852	100%
Net Flow (Living Elsewhere - Working Elsewhere)	179	743	
Largest Single Inflow : Beaufort County, NC	114		15.6%
Largest Single Outflow : Dare County, NC	111		15.2%

Source: US Census Bureau (Includes only domestic commuting for workers over 16 years old.)

**USA Counties IN Profile** provides current federal statistics on a variety of demographic and economic indicators. Read "About the Profile" for the best understanding of the data, ranks and computations. This profile is produced by **STATS Indiana**, a web service of the Indiana Business Research Center at the Indiana University Kelley School of Business. Major support for this effort is provided by the State of Indiana through the Indiana Economic Development Corporation.

STATS Indiana IBRC

A to Z About the Profile Email



Select State  Select County

Compare Within  
U.S.  State



Indiana IN Depth  
City/Co. Finder  
Range Finder  
Maps

Single County | Side by Side

Get Data Print

Overview Population Housing Income Labor BLS BEA All

BEA Employment and Earnings for Hyde County, NC

STATS Indiana  
from the IBRC

BEA Major Sectors (NAICS) in 2003 (by place of work)	Earnings (\$000)	Avg Earnings Per Job	Rank in U.S.	Jobs	Pct Dist. in County	Pct Dist. in U.S.
Total by place of work	\$71,394	\$22,912	2,490	3,116	100.0%	100.0%
Wage and Salary	\$48,222	\$22,356	2,571	2,157	69.2%	82.1%
Proprietors	\$12,251	\$12,775	1,750	959	30.8%	17.9%
Farm	\$4,306	\$38,446	287	112	3.6%	1.3%
Nonfarm	\$7,945	\$9,380	2,821	847	27.2%	16.5%
Farm	\$7,089	\$32,972	322	215	6.9%	1.8%
Nonfarm	\$64,305	\$22,166	2,800	2,901	93.1%	98.2%
Private	\$35,559	\$17,137	2,949	2,075	66.6%	84.0%
Forestry, fishing, etc. *	\$5,246	\$12,257	1,059	428	13.7%	0.6%
21 Mining	\$0	N/A	N/A	0	0.0%	0.4%
22 Utilities	D	N/A	N/A	D	D	0.4%
23 Construction	\$3,946	\$18,101	2,443	218	7.0%	5.8%
31-33 Manufacturing	\$2,142	\$17,415	2,710	123	3.9%	9.0%
42 Wholesale Trade	\$3,212	\$25,094	2,177	128	4.1%	3.7%
44-45 Retail Trade	\$3,971	\$18,643	1,735	213	6.8%	11.0%
48 49 Trans. and warehousing	D	N/A	N/A	D	D	3.2%
51 Information	D	N/A	N/A	D	D	2.1%
52 Finance and insurance	\$488	\$18,074	2,566	27	0.9%	4.8%
53 Real Estate and rental and leasing	\$1,402	\$19,205	589	73	2.3%	3.5%
54 Professional, technical services	\$460	\$10,952	2,169	42	1.3%	6.3%
55 Management of companies, enterprises	D	N/A	N/A	D	D	1.1%
56 Administrative and waste services	D	N/A	N/A	D	D	5.8%
61 Educational services	\$202	\$15,538	833	13	0.4%	2.0%
62 Health care, social assistance	\$2,674	\$20,412	1,594	131	4.2%	9.9%
71 Arts, entertainment, and recreation	\$450	\$10,227	1,203	44	1.4%	2.0%
72 Accommodation and food services	\$4,894	\$15,390	357	318	10.2%	6.7%
81 Other services, exc. public admin.	D	N/A	N/A	D	D	5.7%
NA Gov. and gov. enterprises	\$28,746	\$34,801	1,914	826	26.5%	14.2%

Source: US Bureau of Economic Analysis (BEA)  
 D = Not shown to avoid disclosure of confidential information, but the estimates for this item are included in the totals.  
 L = Less than 10 jobs, but the estimates for this item are included in the totals.  
 N/A = Not available or not applicable.  
 \* = "Other" consists of the number of jobs held by U.S. residents employed by international organizations and foreign embassies and consulates in the United States.

USA Counties IN Profile provides current federal statistics on a variety of demographic and economic indicators. Read "About the Profile" for the best understanding of the data, ranks and computations. This profile is produced by STATS Indiana, a web service of the Indiana Business Research Center at the Indiana University Kelley School of Business. Major support for this effort is provided by the State of Indiana through the Indiana Economic Development Corporation.

STATS Indiana IBRC

A to Z About the Profile Email



Select State  Select County

Compare Within  
U.S.  State



Indiana IN Depth  
City/Co. Finder  
Range Finder  
Maps

Single County | Side by Side

Get Data Print

Overview Population Housing Income Labor BLS BEA All

Hyde County, NC in Profile

STATS Indiana  
from the IBRC



**Hyde County** is one of about 3,141 counties and county equivalents in the United States. It has 612.8 sq. miles in land area and a population density of 9.0 per square mile. In the last three decades of the 1900s its population grew by 4.6%. On the 2000 census form, 99.2% of the population reported only one race, with 35.1% of these reporting African-American. The population of this county is 2.2% Hispanic (of any race). The average household size is 2.36 persons compared to an average family size of 2.94 persons.

In 2004 Public administration was the largest of 20 major sectors. It had an average wage per job of \$28,153. Per capita income grew by 11.5% between 1993 and 2003 (adjusted for inflation).

People & Income Overview (By Place of Residence)	Value	Rank in U.S.	Industry Overview (2004) (By Place of Work)	Value	Rank in U.S.
Population (2004)	5,521	2803	Covered Employment	2,118	2606
Growth (%) since 1990	2.0%	2184	Avg wage per job	\$21,807	2872
Households (2000)	2,185	2804	Manufacturing - % all jobs in County	4.3%	2386
Labor Force (persons) (2004)	2,807	2781	Avg wage per job	\$13,994	2805
Unemployment Rate (2004)	6.9	612	Transportation & Warehousing - % all jobs in County	0.8%	2404
Per Capita Personal Income (2003)	\$20,564	2526	Avg wage per job	\$35,953	1282
Median Household Income (2002)	\$26,633	2792	Health Care, Social Assist. - % all jobs in County	5.0%	1831
Poverty Rate (2002)	21.9	262	Avg wage per job	\$21,134	1748
H.S. Diploma or More - % of Adults 25+ (2000)	68.4	2,601	Finance and Insurance - % all jobs in County	D	N/A
Bachelor's Deg. or More - % of Adults 25+ (2000)	10.6	2,517	Avg wage per job	D	N/A

Population Over Time	Number	Rank in U.S.	Percent of U.S.	U.S.
2004	5,521	2803	<0.01%	293,655,404
2000	5,826	2801	<0.01%	281,421,906
1990	5,411	2807	<0.01%	248,790,925
1980	5,873	2787	<0.01%	226,542,250
1970	5,571	2763	<0.01%	203,302,037
1990 to 2000 % change	7.7%	1654		13.1%
1980 to 2000 % change	-0.8%	2164		24.2%
1970 to 2000 % change	4.6%	2214		38.4%

Source: US Census Bureau

Components of Population Change in 2004	Number	Rank in U.S.	Percent of U.S.	U.S.
Net Domestic Migration (chg 2003/2004)	-25	1834		
Net International Migration (chg 2003/2004)	4	2205	<0.01%	1,221,013
Natural Increase (births minus deaths)	-4	2275	<0.01%	1,645,415
Births	62	2787	<0.01%	4,099,399
Deaths	66	2751	<0.01%	2,453,984

Source: US Census Bureau