

Date: 5/27/06
 To: Superintendent, Outer Banks Group
 From: Chief, Resource Management, Outer Banks Group
 Subject: Resource Protection Closure Request

Number BI-06-001 A

*Faxed 5/30/06
Installed 5/27/06*

Verbal Approval
 Mark Hargrove
 via
 Jen Anglin
 Central

Type of Closure: (circle one)
 breeding (list species AMCY)
 non-breeding (list species _____)
 vegetation/dune (list any T&E species _____)

(Circle one) New Closure - Modification of Existing Closure - Removal of Closure

Proposed Installation / Removal date:
 Actual Installation date: 5/27/06 - installed

Reason for closure, modification or removal:
Amoy nest w/ eggs 35.78426
Physical location: 75.53478

Physical location:
central ocean side of Oregon Inlet closure; .2 mi S of 1st sign of closure

(Circle one) ORV area - non-ORV area - Village - Day Use Area - Other

Description:
nest is 75 ft from string/signs of current closure.
From ② and ④ of nest 100ft a bump out of the closure by 100ft
leaving an ORV corridor of 35-40ft, enough for 2 lanes of traffic
 Attach map showing sketch of proposed closure with approximate perimeter distances and distance to the surf if applicable.

Anticipated removal date:

Removal certification: _____
 Name Date

Submitted by: R. Walker

Verbal approval by Dept. Superintendent

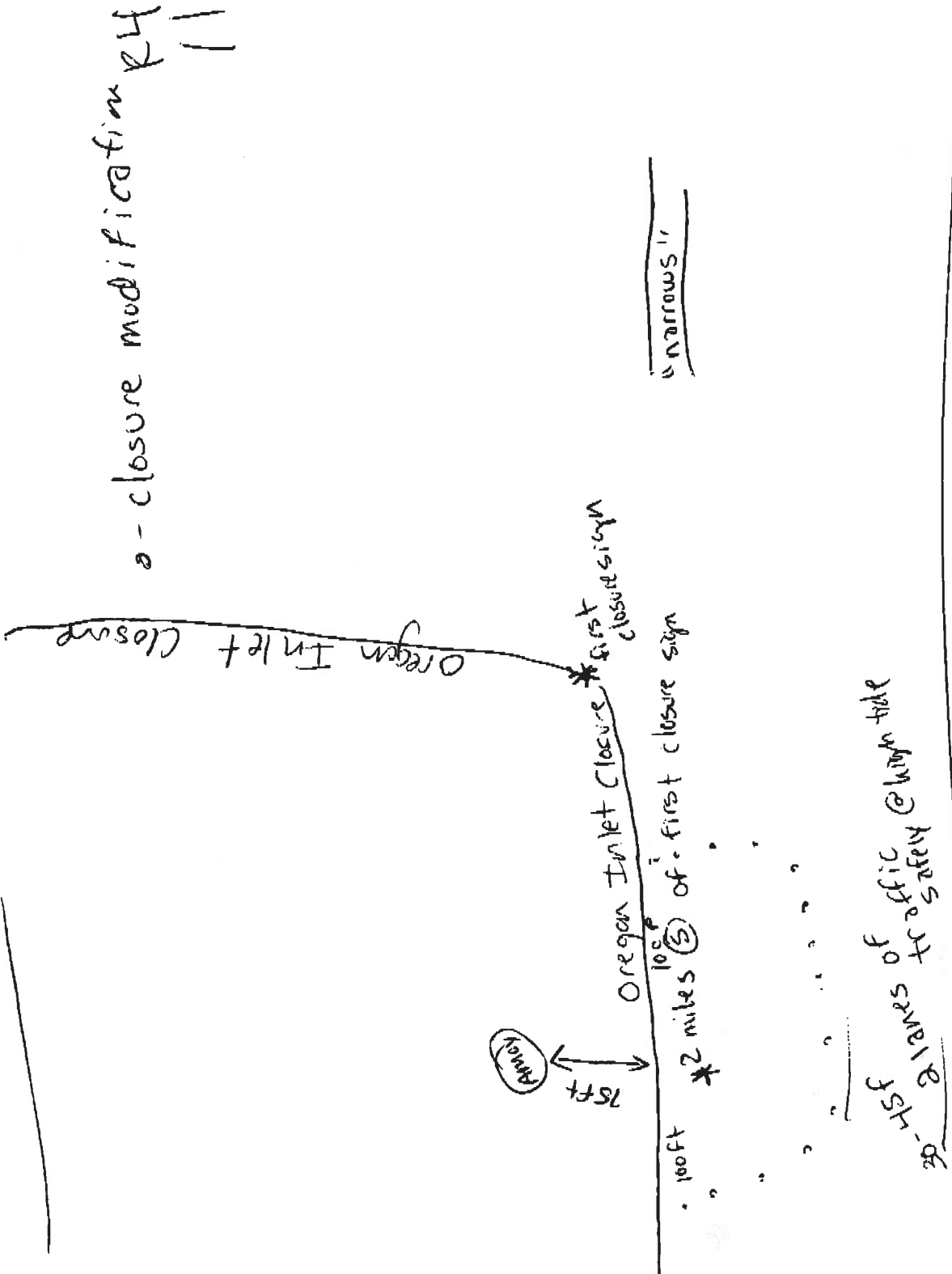
Supported by Thayne Bird 5/27/2006 Chief of Resource Management 5/27/2006

Per 36 C.F.R. §1.5, I have determined that this temporary public use closure is necessary for the protection of a bird breeding and nesting area. A less restrictive measure will not suffice because it will fail to protect wildlife (adults, offspring, eggs) from take (harassment, harm, kill) and disturbance as recommended in species-specific recovery plans or supported by scientific research. A less restrictive measure would also not protect wildlife from direct destruction or disturbance by vehicles and pedestrian. This temporary closure will be removed when the wildlife no longer requires the protection of the closure, i.e. the closure removal will not adversely impact park wildlife.

Approved by:

Michael B. Murray _____
 Date 5/30/06
 Superintendent

not to scale



Number BI-06-001B

Date: June 15, 2006

To: Superintendent, Outer Banks Group
From: Chief, Resource Management, Outer Banks Group
Subject: **RESOURCE PROTECTION CLOSURE REQUEST**

Faxed 6/16/06
Installed

Type of Closure: (circle one)
breeding (list species Piping Plover)
non-breeding (list species _____)
vegetation/dune (list any T&E species _____)

(Circle one) New Closure Modification of Existing Closure Removal of Closure

Proposed/Actual Installation date: A SAP ~ June 15-16 2006

Reason for closure, modification or removal: 4 birds observed
1 pair, possibly 2 pairs of Piping Plover now together on outer boundary
of Oregon Inlet Closure. Mating habits observed as well as
scrapping in at least 2 locations. Birds observed 15yds from
Physical location: closure boundary feeding and 15yds from boundary scrapping

(Circle one) ORV area non-ORV area Village - Day Use Area - Other

Description of Action (If additional space needed, put on separate sheet. Attach map showing sketch of proposed closure with approximate perimeter distances and distance to the tide line if applicable):

(see map)
Suggest Extending existing closure outward 90' toward
Ocean. This would occur $\frac{5}{10}$ mile from the beginning of the
closure. $\frac{2}{10}$ and $\frac{1}{2}$ of $\frac{1}{10}$ would be bumped out 90' towards
Ocean. This would leave 82' to high tide line on North end
of suggested closure and 148' to high tide line on Southern end
of closure open to ORV traffic. This may need modified
pending further observations

Anticipated removal date: ?

Removal certification:

Name

Date

Submitted by Bio technician David A Tenenowicz

Supported by Thayer Birch: 6/16/06 Chief of Resource Management

Approved by: Michael B. Murray 6/16/06
Superintendent Date

* maintain access corridor above high tide line.

Edited May 26, 2006

ATTN: Buxton RM
Marie Reed

Date: 6/15/06

Number BI-06-001C

To: Superintendent, Outer Banks Group
From: Chief, Resource Management, Outer Banks Group
Subject: RESOURCE PROTECTION CLOSURE REQUEST

Faxed 6/19/06
Installed

Type of Closure: (circle one)
breeding (list species AMOY)
non-breeding (list species)
vegetation/dune (list any T&E species)

(Circle one) New Closure Modification of Existing Closure - Removal of Closure

Proposed/Actual Installation date: 6/19/06 BI-06-01

Reason for closure, modification or removal:
hatch of AMOY chick ... one egg

Physical location:
0.2 mi of first closure sign;

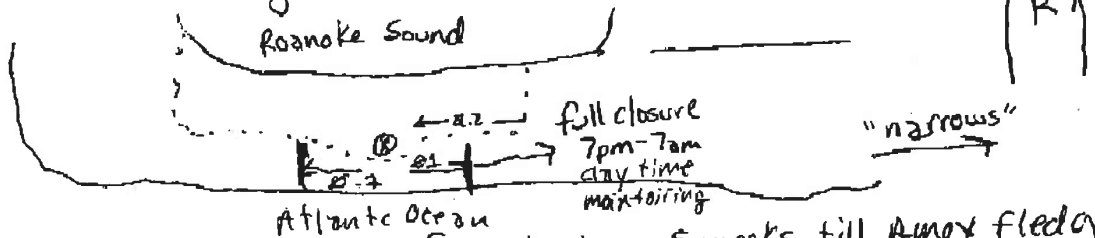
(Circle one) ORV area - non-ORV area - Village - Day Use Area - Other

Description of Action (If additional space needed, put on separate sheet. Attach map showing sketch of proposed closure with approximate perimeter distances and distance to the tide line if applicable):

7pm - 7am full shoreline closure 0.15 mi; 0.1 mi

Day time monitoring
parents are feeding on both sound and oceanside

Not to scale



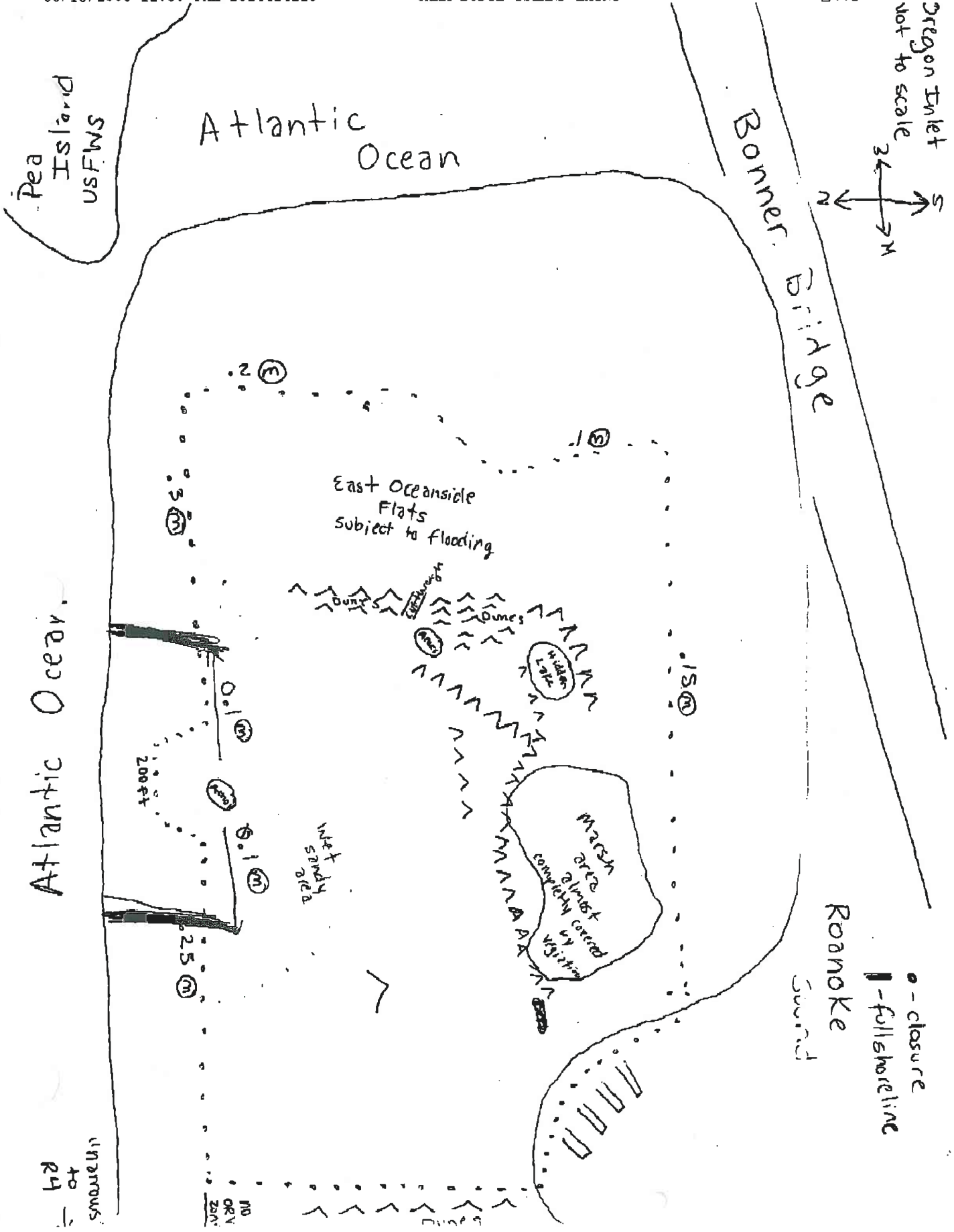
Anticipated removal date: 1 week of monitoring; 5 weeks till AMOY fledge

Removal certification: _____

Submitted by R. Walker Date _____
* Approved evening (7pm-7am) closures
one egg hatch

Supported by Thayer Birk 6/19/06 Chief of Resource Management

Approved by B. Murray Date 6/19/06
Superintendent



Date: 6/27/06

Number BI-06-01D

To: Superintendent, Outer Banks Group
From: Chief, Resource Management, Outer Banks Group
Subject: RESOURCE PROTECTION CLOSURE REQUEST

Faxed 6/30/06
Installed,

Type of Closure: (circle one)
breeding (list species AMOY)
non-breeding (list species _____)
vegetation/dune (list any T&E species _____)

(Circle one) New Closure Modification of Existing Closure Removal of Closure

Proposed/Actual Installation date: 6/27/06 # BI-06-01

Reason for closure, modification or removal:
move of AMOY pair and chick to tidal
soundside area

Physical location:
0.1 from 1st sign; for 0.2 mile; Oregon Inlet
(Circle one) ORV area - non-ORV area - Village - Day Use Area - Other

Description of Action (If additional space needed, put on separate sheet. Attach map showing sketch of proposed closure with approximate perimeter distances and distance to the tide line if applicable):

- removal of 7am-7pm beach open
- ~~ORV~~ ORV parking allowed
- closure is now 200ft from high tide line

Anticipated removal date: Done 6/27 AM

Removal certification: _____
Name Date

Submitted by R. Walker

Supported by Thayne Baird: 6/27/06 Chief of Resource Management

Approved by: MAR [Signature] 6/28/06
Superintendent Date

BI-06-001E

Number ~~(BI-06-002B)~~

Date: July 4, 2006

To: Superintendent, Outer Banks Group
From: Chief, Resource Management, Outer Banks Group
Subject: RESOURCE PROTECTION CLOSURE REQUEST

Faxed 7/5/06

Installed

Type of Closure: (circle one)
breeding (list species _____)
non-breeding (list species _____)
vegetation/dune (list any T&E species _____)

(Circle one) New Closure - Modification of Existing Closure - Removal of Closure

Proposed/Actual Installation date: ASAP

Reason for closure, modification or removal:

Least Terns now mating, as well as nests with eggs approx. 30-50yds from present closure. Walking along boundary Least Terns defended the area

Physical location:

(Circle one) ORV area - non-ORV area - Village - Day Use Area - Other

Description of Action (If additional space needed, put on separate sheet. Attach map showing sketch of proposed closure with approximate perimeter distances and distance to the tide line if applicable):

Suggest Bumping current Oregon Inlet (BI) spit closure outwards 50 feet for approx. 1/2 of a mile. This is located along current closure approx. 1/2 and 1/2 of another tenth NW of the current Northern Boundary of closure. This will still leave approx. 150 feet of passage to the High tide Line

Anticipated removal date: July 5, 2006

Removal certification: _____ Date July 4, 2006

Submitted by Daniel A Tenenowicz _____

Supported by Thayer Beink 7/5/06 _____ Chief of Resource Management

Approved by: _____ Date 7/05/06
Superintendent

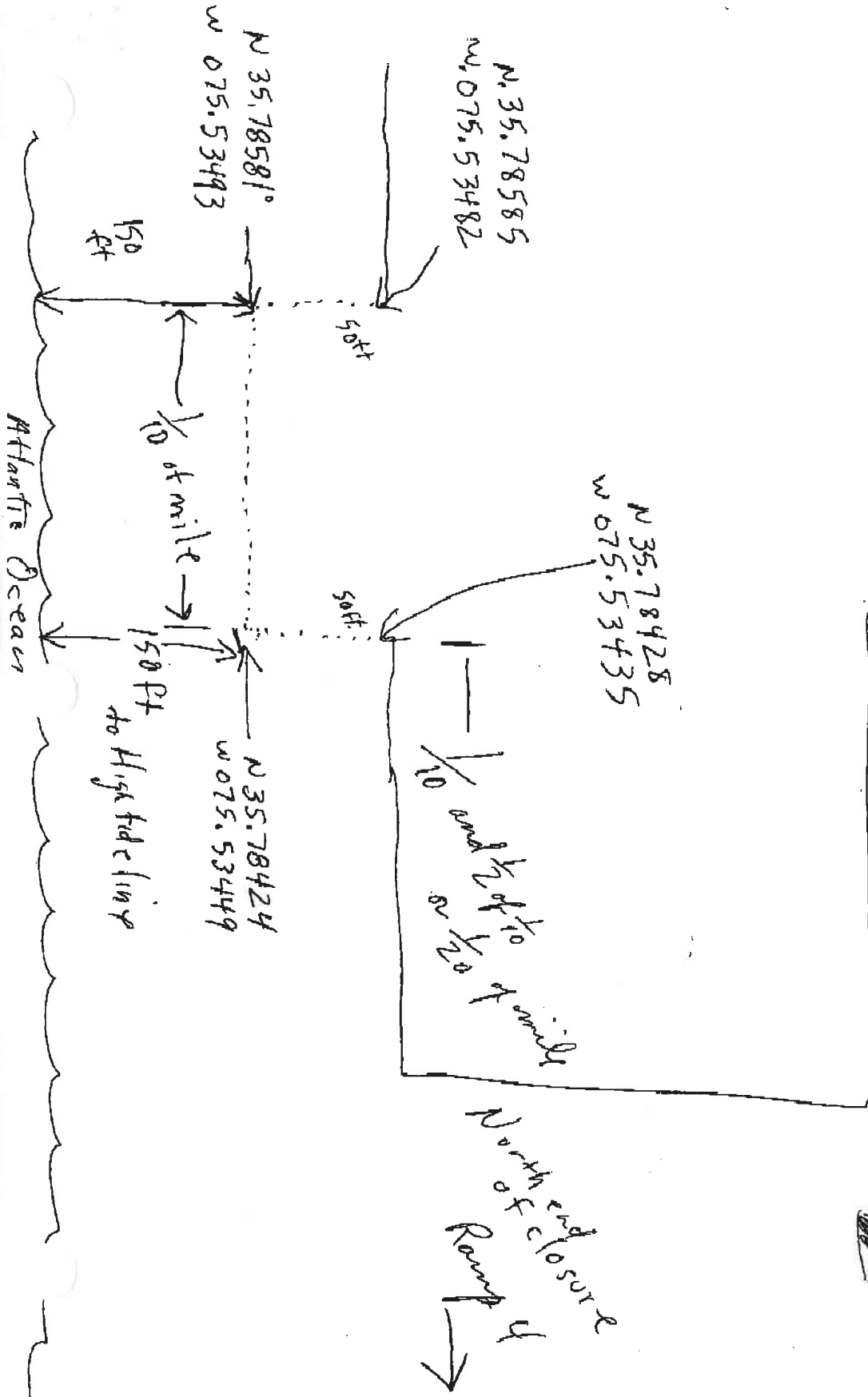
0033567

07/04/2006 14:12 FAX 2524414129

CAHA BODIE ISLAND MAINT

003

July 4, 2006



Attn: Thayer Braili

Number BI-06-001F

Date: 7-13-06

To: Superintendent, Outer Banks Group
From: Chief, Resource Management, Outer Banks Group
Subject: **RESOURCE PROTECTION CLOSURE REQUEST**

*Faxed 7/20/06
Installed*

Type of Closure: (circle one)
Breeding (list species LETE)
non-breeding (list species _____)
vegetation/dune (list any T&E species _____)

(Circle one) New Closure - Modification of Existing Closure - Removal of Closure

Proposed/Actual Installation date: As soon as chicks are present

Reason for closure, modification or removal:
Protection of newly hatched & unfledged chicks

Physical location: 0.7 m S of RM
Boate Island, Oregon Inlet bird closure - NE side

(Circle one) ORV area non-ORV area - Village - Day Use Area - Other

Description of Action (If additional space needed, put on separate sheet. Attach map showing sketch of proposed closure with approximate perimeter distances and distance to the tide line if applicable):

- ① Full beach closure - closed to pedestrians & ORV's
- ② Closed to ORV's but maintain pedestrian, walk-through-only corridor to allow access to pedestrians on other side of colony (inlet side)

Anticipated removal date:

Removal certification: _____
Name Date

Submitted by Dan Douglas

** See attached modified recommendation*

Supported by Thayer Braili 7/20/2006 Chief of Resource Management

Approved by B. Murray 7/20/06
Superintendent Date

** Approved as modified (see attached)*

July 20, 2006

**Resource Management Closure Request for Bodie Island Least Tern Colony;
Submitted by Biological Technician on 7-13-06; Modified Request Based on Review
by Resource Management Chief**

Based on field review of the situation and taking into consideration the 2 potential proposed actions submitted on 7-13-2006, the following comments are offered:

- There does not seem to be a reliable bypass route available. The back side of the closure area closest to the sound and inlet pond, although not currently containing nests and some distance from the existing nests (approx. 100-200 ft.) is extremely flat and subject to collecting standing water in high tide or rainy situations. Discussion with RM and LE field personnel, when inundated, it remains so for extended (several days+) periods.
- When walking through the area, the nesting terns displayed agitation and alarm to a greater degree than when approaching the beach side of the closure. This is likely due to the habituation of the terns to the beach side human activity whereas they are not used to human presence in the back portion of the closure.

Given this situation, the following recommendation is made:

- Establish a drive-thru route on the front side of the closure between the high tide line and the current closure. The current closure may be bumped out 20-30 ft., leaving a drive-thru approximately 30 ft. wide, or adequate for two lines of traffic.
- At the ends of the current bump-out, expand the bump-out approximate 100 ft. at each end to gradually tie in to the existing closure at the 100 ft. point.

Additionally, the south end of the Spit has no nesting activity. Given the probability of no further Piping Plover nesting activity, access on the south end of the Spit and the west side near bridge should be adjusted to a minimum of 150 ft. or to the dune/vegetation line, whichever is limiting.



Thayer Broili, Resource Management Chief

Date: 9-4-06

Number BT-06-001 G

To: Superintendent, Outer Banks Group
From: Chief, Resource Management, Outer Banks Group
Subject: RESOURCE PROTECTION CLOSURE REQUEST

Faxed 9/6/06

Type of Closure: (circle one)
breeding (list species _____)
non-breeding (list species Pipit)
vegetation/dune (list any T&E species _____)

(Circle one) New Closure Modification of Existing Closure - Removal of Closure

Proposed/Actual Installation date: 9/8/06

Reason for closure, modification or removal:

End of breeding season - modify for wintering birds

Physical location: Oregon Inlet spit !

(Circle one) ORV area non-ORV area - Village - Day Use Area - Other

Description of Action (If additional space needed, put on separate sheet. Attach map showing sketch of proposed closure with approximate perimeter distances and distance to the tide line if applicable):

Majority of closure falls within 150' non-ORV Corridor

See map for rough estimate

Anticipated removal date:

Removal certification:

Submitted by: Naren Sawyer + Britta Muznick
Name Date

Supported by: Thom Beak 9/6/06 Chief of Resource Management

Approved by: Michael B Murray Date 9/06/06
Superintendent

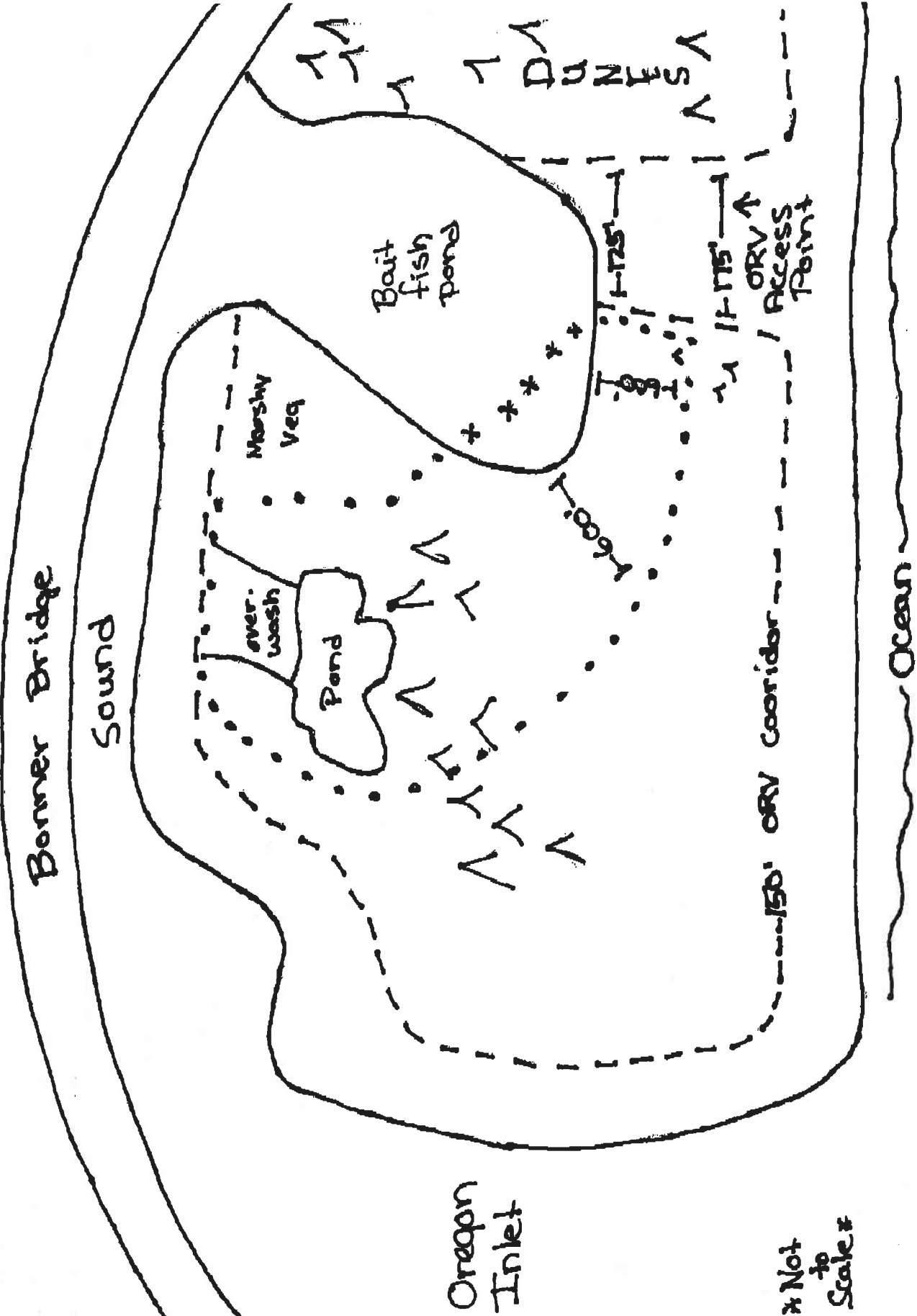
BI-04 201

SEP-06-2006 09:15 AM

0033571

P. 03

--- ORV corridor
... winter bird closure



* Not to Scale *

COPY

Date: 9-4-06

Number BI-06-007 R

To: Superintendent, Outer Banks Group
From: Chief, Resource Management, Outer Banks Group
Subject: RESOURCE PROTECTION CLOSURE REQUEST

Type of Closure: (circle one)
breeding (list species Pre-nesting closure)
non-breeding (list species _____)
vegetation/dune (list any T&E species _____)

(Circle one) New Closure - Modification of Existing Closure - Removal of Closure

Proposed/Actual Installation date: To be determined on boat availability

Reason for closure, modification or removal:
End of nesting season

Physical location: Green Island

(Circle one) ORV area - non-ORV area - Village - Day Use Area - Other

Description of Action (If additional space needed, put on separate sheet. Attach map showing sketch of proposed closure with approximate perimeter distances and distance to the tide line if applicable):

Anticipated removal date:

Removal certification:

Submitted by: Name: [Signature] + [Signature] Date: _____

Supported by _____ Chief of Resource Management

Approved by:

Superintendent _____ Date _____