

FAXED
9/2/08
MK

Number WM08-BI-01

Date: 8/26/08

To: Superintendent, Outer Banks Group
From: Chief, Resource Management, Outer Banks Group
Subject: RESOURCE PROTECTION CLOSURE REQUEST

Type of closure:

- breeding (list species)
- non-breeding (list species PIPL)
- vegetation/dune (list any T&E species)

New Closure - Modification of Existing Closure - Removal of Closure

Proposed Actual Installation date: 8/26/08

Reason for closure, modification or removal: Wintering as well as migratory PIPL utilize the sand/algal/mud flats. The wintering birds had been frequently observed on the flats on the NE and E end of the bait pond.

Physical location: Bodie Spit

ORV area - non-ORV area - Village - Day Use Area - Other()

Description of Action (If additional space needed, put on separate sheet. Attach map showing sketch of proposed closure with approximate perimeter distances and distance to the tide line if applicable): The ORV corridor (i.e. brown carsonite) along the oceanside shoreline was still in place from last season. Red carsonite will be used to delineate the winter bird closure that encompasses the sand/algal/mud flat habitat type. The area delineated by the red carsonite will not be accessible to pedestrians, pets or ORVs. The point at the SE end of the Bait Pond will be accessible only to pedestrians (~300 m of shoreline parallel to the bridge).

Anticipated removal date:

Removal certification:

Name

Date

TB 8/28/08

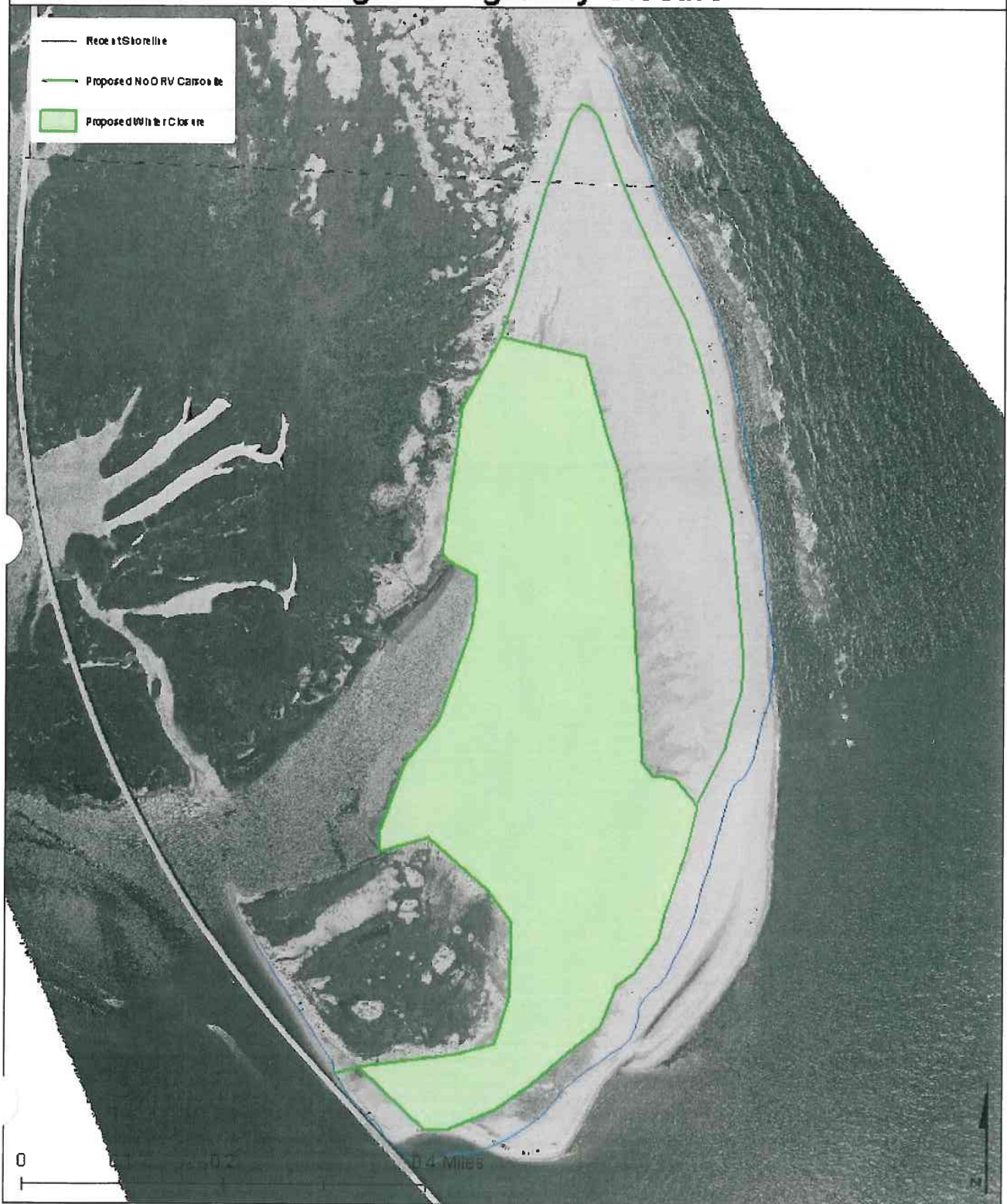
Submitted by Approved by:

M. Murray
Superintendent

8/29/08
Date



WM08-BI-01 Wintering and Migratory Closure



FAXED
9/2/08
wn

Number WM08-HI-02

Date: 8/25/2008

To: Superintendent, Outer Banks Group
From: Chief, Resource Management, Outer Banks Group
Subject: RESOURCE PROTECTION CLOSURE REQUEST

Type of closure:

- breeding (list species)
- non-breeding (list species)
- vegetation/dune (list any T&E species)

New Closure - Modification of Existing Closure - Removal of Closure

Proposed Actual Installation date: 8/25/2008

Reason for closure, modification or removal: Very few PIPL migrants use the Cape Point area and no wintering birds have been observed using the area. We recommend installing an ORV corridor (delineated with brown carsonite) instead of a winter closure (delineated by Bird Area Closed signs).

Physical location: Cape Point

ORV area - non-ORV area - Village - Day Use Area - Other()

Description of Action (If additional space needed, put on separate sheet. Attach map showing sketch of proposed closure with approximate perimeter distances and distance to the tide line if applicable): An ORV corridor (~70 m) will be installed from Ramp 44 all the way around to Salt Pond Road. Pedestrians will be allowed to walk duneward of the brown carsonite however no dogs will be allowed inside this area. The brown carsonite delineating the ORV corridor should have "No dog" stickers on them.

Anticipated removal date:

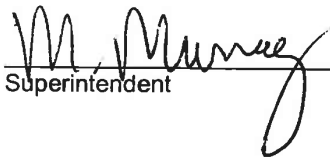
Removal certification:

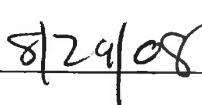
Name

Date

MS 8/28/08

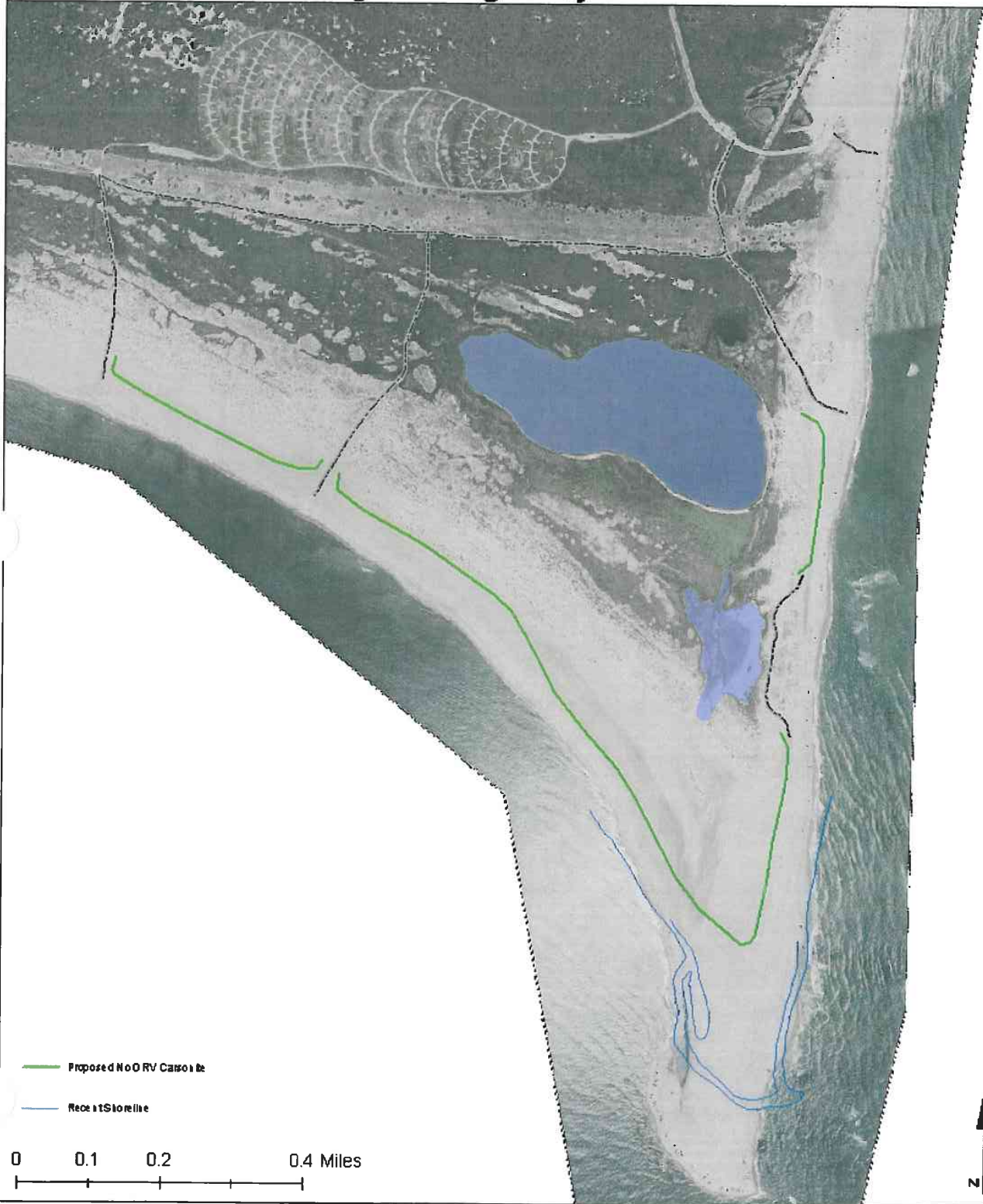
Submitted by B. Muiznieks Approved by:


Superintendent


Date 8/29/08



WM08-HI-02 Wintering and Migratory Closure



— Proposed No-O RV Corridor
— Recreational Shoreline

0 0.1 0.2 0.4 Miles

9/2/08
MK
FAXED

Number WM08-OI-01

Date: 8/28/2008

To: Superintendent, Outer Banks Group
From: Chief, Resource Management, Outer Banks Group
Subject: RESOURCE PROTECTION CLOSURE REQUEST

Type of closure:

- breeding (list species)
- non-breeding (list species PIPL)
- vegetation/dune (list any T&E species)

New Closure - Modification of Existing Closure - Removal of Closure

Proposed Actual Installation date: 8/28/08

Reason for closure, modification or removal: Wintering as well as migratory PIPL utilize the sand/algal/mud flats. The pedestrian corridor starts just before an ephemeral pool, a preferred foraging location for non-breeding PIPL. This year the wintering closure includes the sand flats as well as the algal/mud flats to include the habitat type where birds were observed during the non-breeding season.

Physical location: South Point

ORV area - non-ORV area - Village - Day Use Area - Other()

Description of Action (If additional space needed, put on separate sheet. Attach map showing sketch of proposed closure with approximate perimeter distances and distance to the tide line if applicable): South of Ramp 72 approximately 2.3 mi of shoreline will be open to ORVs. A 150 foot wide ORV corridor was established and designated with brown carsonite. The wintering/migratory closure will be designated with red carsonite. No access is permitted beyond the red carsonite. The easternmost point on South Point will only be accessible to pedestrians. No dogs will be allowed in the pedestrian corridor. Depending on the tides, as little as 100 m (at high tide) will be open to pedestrians or as much as 1300 m (at low tide).

Anticipated removal date:

Removal certification:

Name

Date

TB 8/28/08

Submitted by B. Muiznieks Approved by:

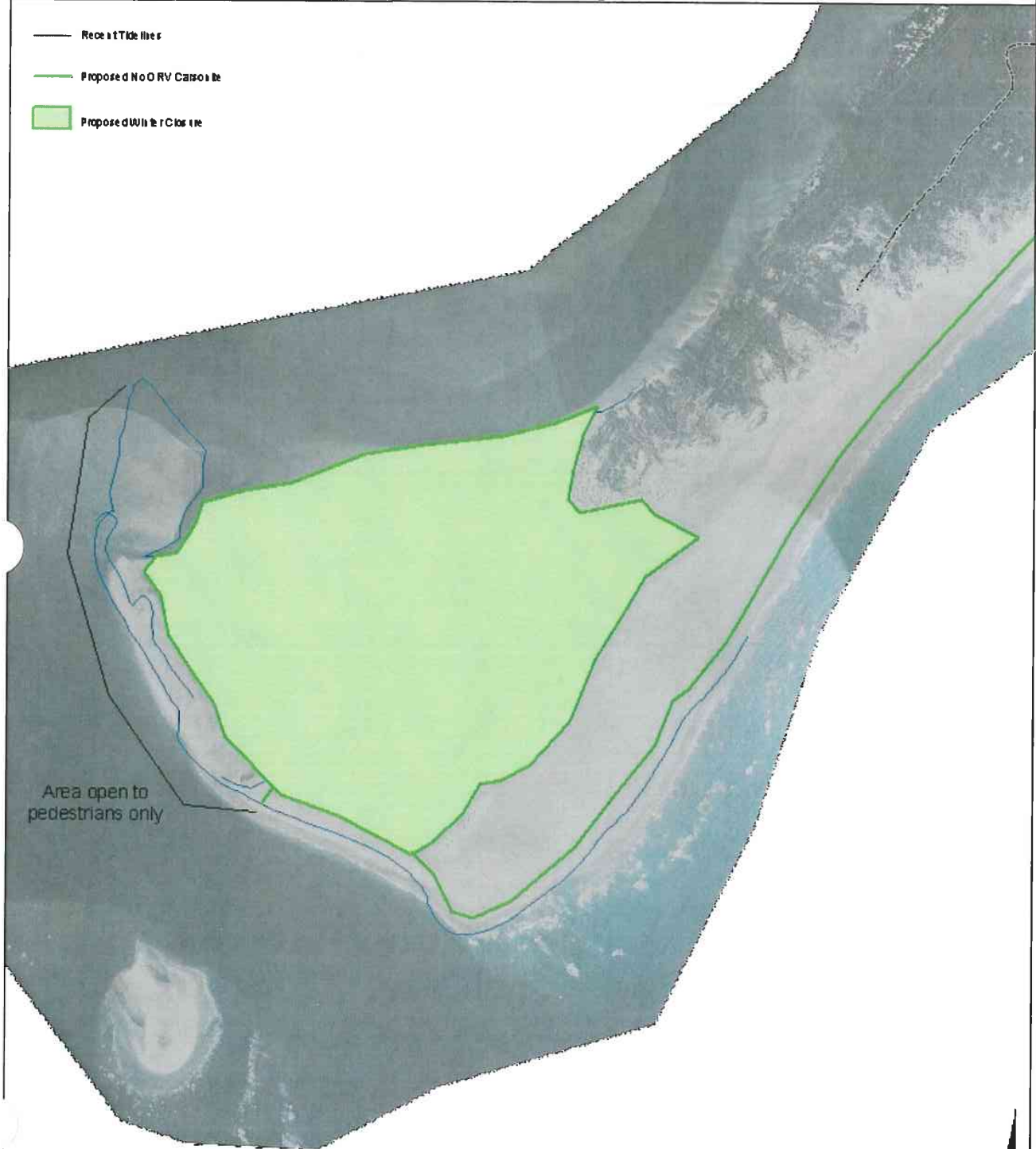
M. Murrey
Superintendent

8/29/08
Date

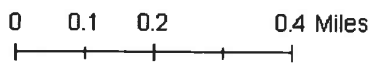


WM08-OI-01 Wintering and Migratory Closure

- Recreational Use
- Proposed No RV Campsite
- Proposed Winter Closure



Area open to pedestrians only



0034449

Britta Muiznieks/CAHA/NPS
08/28/2008 12:02 PM

To Mike Murray/CAHA/NPS@NPS, Thayer
Broili/CAHA/NPS@NPS, Darrell Echols/CAHA/NPS@NPS
cc Cyndy Holda/CAHA/NPS@NPS, Marie
Reed/CAHA/NPS@NPS, Jon Anglin/CAHA/NPS@NPS
bcc

Subject Winter closure on South Point (Ocracoke)

The following "winter closure" request and map is available on the shareall (I:\2008 Resource Closures\Wintering and Migratory):

20080828 WM08-OI-01

Britta Muiznieks
Wildlife Biologist
Cape Hatteras National Seashore

252-995-3740-Office
252-475-8348-Cell
252-995-6998-FAX



MS
8/28/08

FAXED
9/30/08

Number WM-OI08-01A

Date: 9/29/08

To: Superintendent, Outer Banks Group
From: Chief, Resource Management, Outer Banks Group
Subject: RESOURCE PROTECTION CLOSURE REQUEST

Type of closure:

- breeding (list species)
- non-breeding (list species PIPL)
- vegetation/dune (list any T&E species)

New Closure - Modification of Existing Closure - Removal of Closure

Proposed Actual Installation date: 9/30/08

Reason for closure, modification or removal: To provide sound-side access to ORVs and pedestrians on South Point.

Physical location: South Point Ocracoke

ORV area - non-ORV area - Village - Day Use Area - Other()

Description of Action (If additional space needed, put on separate sheet. Attach map showing sketch of proposed closure with approximate perimeter distances and distance to the tide line if applicable): Between the dunes and winter closure, a small ORV corridor will be signed to allow for sound-side access. The northwest end of the wintering closure will be modified to widen the area of allowable access.

Anticipated removal date: March 1

Removal certification:

Name

Date

TB 9/30/08

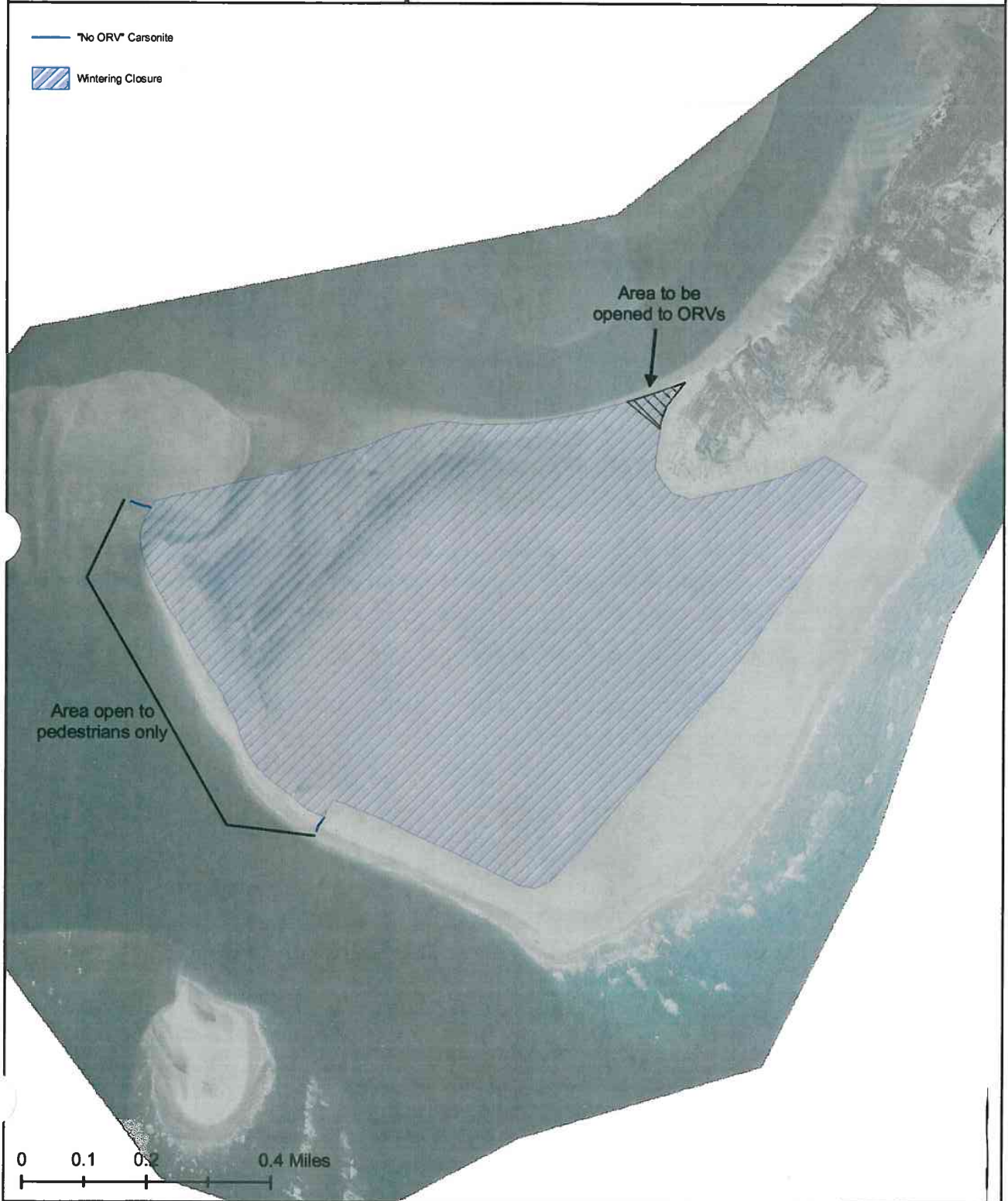
Submitted by Doug McGee Approved by:

Michael B. Munay
Superintendent

9/30/08
Date



Closure Modification Request WM-OI08-01-A



FAXED COPY
8/8/08
WK

Number WM08-OI-02

ORIGINAL

Date: 8/6/2008

To: Superintendent, Outer Banks Group
From: Chief, Resource Management, Outer Banks Group
Subject: RESOURCE PROTECTION CLOSURE REQUEST

Type of closure:

- breeding (list species)
- non-breeding (list species PIPL)
- vegetation/dune (list any T&E species)

New Closure - Modification of Existing Closure - Removal of Closure

Proposed Actual Installation date: 8/6/08

Reason for closure, modification or removal: Staff has been monitoring north Ocracoke for migrating PIPLs and based on the numbers of birds consistently present (9-20) during those observations a migratory closure is recommended.

Physical location: North Ocracoke

ORV area - non-ORV area - Village - Day Use Area - Other()

Description of Action (If additional space needed, put on separate sheet. Attach map showing sketch of proposed closure with approximate perimeter distances and distance to the tide line if applicable): Carsonite will be used to establish a no-ORV corridor on the western half of the north Ocracoke flats. Pedestrian access will continue, but "No Pet" signs will be put in place.

Anticipated removal date:

Removal certification:

Name

Date

TB 8/8/08

Submitted by D. McGee, B. Muiznieks Approved by:

for David McGee
Superintendent

8/5/08
Date



VM08-OI-02 Winter and Migratory Bird Closure

- Recent P.L. Foraging
- Suggested Closure Location
- Recent High Tide
- ▣ Current Closure

