

FAXED  
8/9/10

MR

Number GI10-001-R

Date: 8/05/2010

To: Superintendent, Outer Banks Group  
From: Chief, Resource Management, Outer Banks Group  
Subject: RESOURCE PROTECTION CLOSURE REQUEST

Type of closure:

- breeding (list species AMOY, COTE)
- non-breeding (list species )
- vegetation/dune (list any T&E species )
- deliberate violation

New Closure -  Modification of Existing Closure -  Removal of Closure

Proposed  Actual Installation date:

Reason for closure, modification or removal: No breeding behavior has been observed for COTEs or AMOYs in this area for 2 weeks.

Physical location: Perimeter of Green Island.

ORV area -  non-ORV area -  Village -  Day Use Area -  Other(Boat access)

Description of Action (If additional space needed, put on separate sheet. Attach map showing sketch of proposed closure with approximate perimeter distances and distance to the tide line if applicable): The closure was removed. Soundside areas are not included in seabeach amaranth surveys.

Anticipated removal date:

Removal certification: P. Doshkov  
Name

8/5/2010  
Date

Submitted by P. Doshkov Approved by: D. McGee

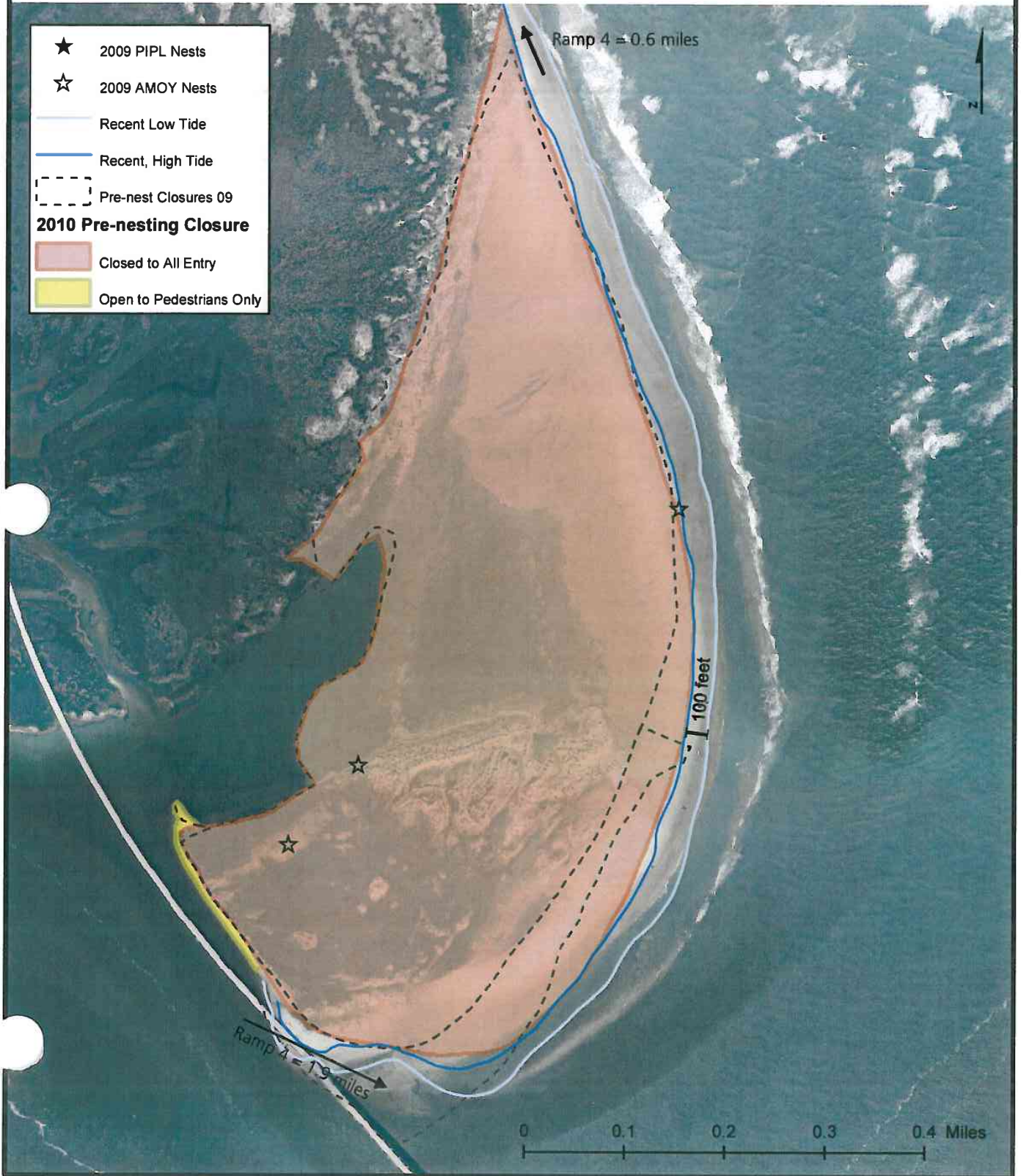
*Thayr Biachi*  
8/6/2010

*P. Doshkov*  
Superintendent

8/6/10  
Date



# 010 Bodie Island Spit Pre-nesting Closure As Installed



**FAXED**  
4/13/10  
NR

Number BI10-001-A

Date: 4/10/2010

To: Superintendent, Outer Banks Group  
From: Chief, Resource Management, Outer Banks Group  
Subject: **RESOURCE PROTECTION CLOSURE REQUEST**

**Type of closure:**

- breeding (list species AMOY)
- non-breeding (list species )
- vegetation/dune (list any T&E species )
- deliberate violation

New Closure -  Modification of Existing Closure -  Removal of Closure

Proposed  Actual Installation date: 4/10/2010

**Reason for closure, modification or removal:** According to the Consent Decree (Pg. 5, Buffers), NPS "shall establish buffers for observed breeding behavior, including but not limited to territorial behavior, courtship, mating, confirmed scrapes, or other nest-building activities." The Consent Decree also states that the breeding behavior/nest buffer for American oystercatchers will be 150 meters.

One scrape was observed for the AMOY breeding pair GrC9/UNB.

**Physical location:** Small point on southern end of Bait Pond

ORV area -  non-ORV area -  Village -  Day Use Area -  Other( )

**Description of Action (If additional space needed, put on separate sheet. Attach map showing sketch of proposed closure with approximate perimeter distances and distance to the tide line if applicable):** A closure was installed on the southern end of the Bait Pond at Bodie Island Spit. This now eliminates 0.1 mi of the existing pedestrian access and completely restricts access to the Bait Pond for pedestrians.

**Anticipated removal date:**

**Removal certification:**

Name

Date

Submitted by P. Doshkov Approved by: T. Broili (Acting Superintendent - Verbally)

M. Murray  
Superintendent

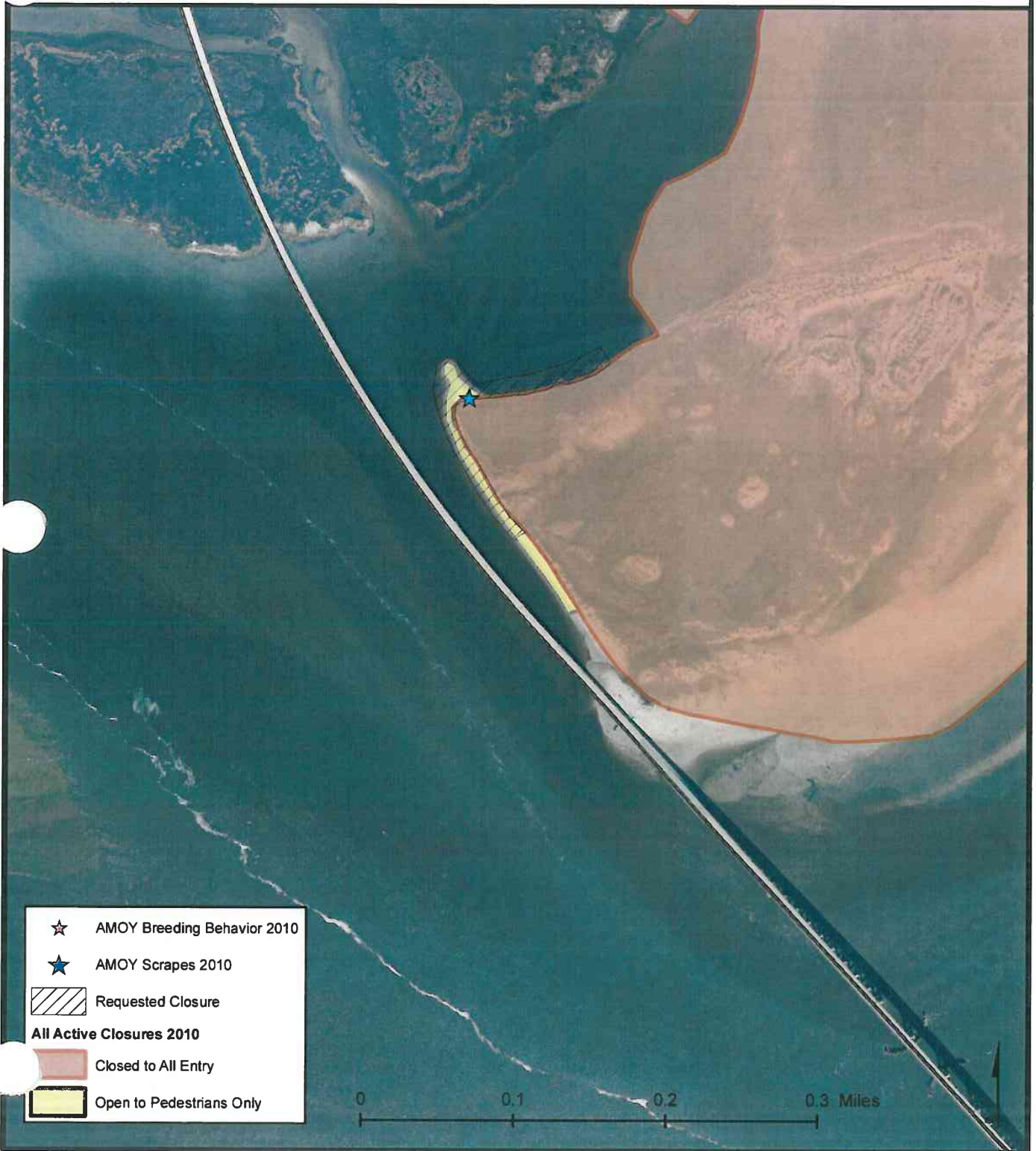
4/13/10  
Date

*Thayer Broili*  
*4/12/10*





# 2010 BI10-001-A Closure Request



- ☆ AMOY Breeding Behavior 2010
- ★ AMOY Scrapes 2010
- ▨ Requested Closure
- All Active Closures 2010**
- Closed to All Entry
- Open to Pedestrians Only

0 0.1 0.2 0.3 Miles

148  
FAXED  
5/14/10

Number B110-001-B

Date: 5/10/2010

To: Superintendent, Outer Banks Group  
From: Chief, Resource Management, Outer Banks Group  
Subject: RESOURCE PROTECTION CLOSURE REQUEST

Type of closure:

- breeding (list species LETE)
- non-breeding (list species )
- vegetation/dune (list any T&E species )
- deliberate violation

New Closure -  Modification of Existing Closure -  Removal of Closure

Proposed  Actual Installation date: 5/9/2010

Reason for closure, modification or removal: According to the Consent Decree (Pg. 5, Buffers), NPS "shall establish buffers for observed breeding behavior, including but not limited to territorial behavior, courtship, mating, confirmed scrapes, or other nest-building activities." The Consent Decree also states that the breeding behavior/nest buffer for LETE will be 100 meters.

Multiple LETE scrapes were documented within the sand flats E of the Bait Pond, in the same general area where we had a LETE colony in 2009.

Physical location: 0.9 mi S of Ramp 4

ORV area -  non-ORV area -  Village -  Day Use Area -  Other( )

Description of Action (If additional space needed, put on separate sheet. Attach map showing sketch of proposed closure with approximate perimeter distances and distance to the tide line if applicable): A 100 meter buffer will be established around the scrape locations resulting in a full beach closure of ~0.1 mi. The buffer will result in the closure of Bodie Island Spit to ORVs ~0.9mi S of R4. Limited access will extend from ~1.0mi S of R4 to ~2.0mi S of R4.

Anticipated removal date:

Removal certification:

Name

Date

Submitted by T. Bogardus Approved by: M. Murray (Verbally)

*Thayer Bink*  
5/14/2010

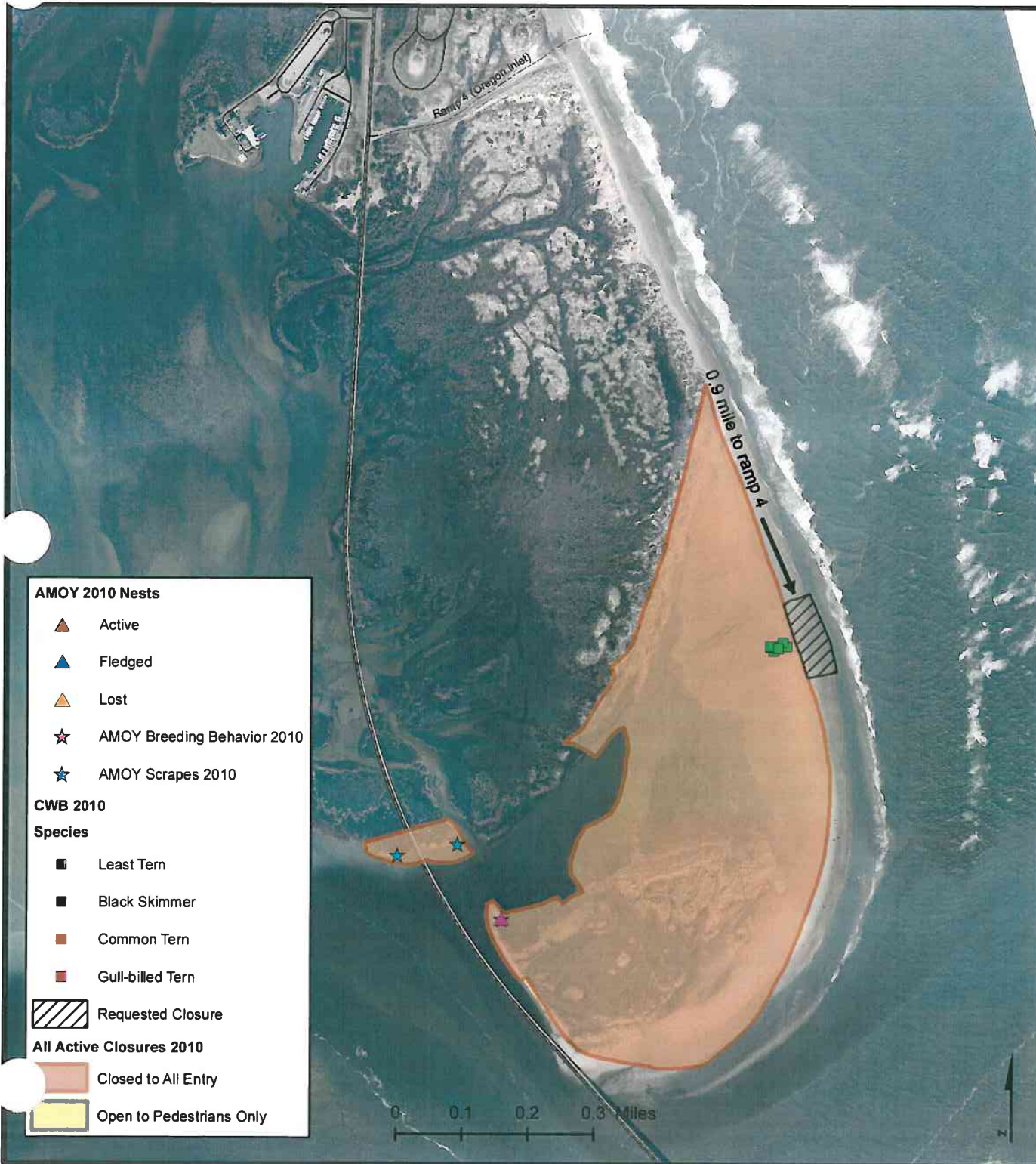
*M. Murray*  
Superintendent

5/10/10  
Date





# 2010 BI10-001-B Closure Request



FAXED  
5/14/10  
MK

Number BI10-001-C

Date: 5/11/2010

To: Superintendent, Outer Banks Group  
From: Chief, Resource Management, Outer Banks Group  
Subject: RESOURCE PROTECTION CLOSURE REQUEST

Type of closure:

- breeding (list species AMOY)
- non-breeding (list species )
- vegetation/dune (list any T&E species )
- deliberate violation

New Closure -  Modification of Existing Closure -  Removal of Closure

Proposed  Actual Installation date: 5/11/2010

**Reason for closure, modification or removal:** According to the Consent Decree (Pg. 5, Buffers), NPS "shall establish buffers for observed breeding behavior, including but not limited to territorial behavior, courtship, mating, confirmed scrapes, or other nest-building activities." The Consent Decree also states that the breeding behavior/nest buffer for AMOYs will be 150 meters.

AMOY pair GrC9/UNB lost their nest on the southern end of the Bait Pond on 4/29. A one-egg nest was found on the southern end of Bodie Spit proper on 5/11.

**Physical location:** 0.9 mi S of Ramp 4

ORV area -  non-ORV area -  Village -  Day Use Area -  Other( )

**Description of Action (If additional space needed, put on separate sheet. Attach map showing sketch of proposed closure with approximate perimeter distances and distance to the tide line if applicable):** A 150 meter buffer will be placed around the nest location resulting in a full beach closure of ~0.2 mi. starting at ~1.5 mi. south of Ramp 4. Access to this area is already limited by closure BI10-001-B at 0.8 mi south of Ramp 4 for LETEs. The closure modification/expansion installed for this pair's previous nest location will revert back to the pre-nesting closure boundaries.

**Anticipated removal date:**

**Removal certification:**

Name Date

Submitted by B. Muiznieks Approved by: M. Murray (Verbally)

M. Murray  
Superintendent

5-12-10  
Date





# 2010 BI10-001-C Closure Request





FAXED  
5/18/10  
MK

Number BI10-001-D

Date: 5/17/2010

To: Superintendent, Outer Banks Group  
From: Chief, Resource Management, Outer Banks Group  
Subject: RESOURCE PROTECTION CLOSURE REQUEST

Type of closure:

- breeding (list species AMOY)
- non-breeding (list species )
- vegetation/dune (list any T&E species )
- deliberate violation

New Closure -  Modification of Existing Closure -  Removal of Closure

Proposed  Actual Installation date: 5/16/2010

**Reason for closure, modification or removal:** According to the Consent Decree (Pg. 5, Buffers), NPS "shall establish buffers for observed breeding behavior, including but not limited to territorial behavior, courtship, mating, confirmed scrapes, or other nest-building activities." The Consent Decree also states that the breeding behavior/nest buffer for AMOYs will be 150 meters.

AMOY pair GrC9/UNB lost a 1-egg nest on the southern end of Bodie Spit proper on 5/13. On 5/16 a new 1-egg nest was found in a different location.

**Physical location:** 1.5 mi S of Ramp 4

ORV area -  non-ORV area -  Village -  Day Use Area -  Other( )

**Description of Action (If additional space needed, put on separate sheet. Attach map showing sketch of proposed closure with approximate perimeter distances and distance to the tide line if applicable):** The closure will be modified to the south to ensure a 150 meter buffer from the nest resulting in a full beach closure starting at ~1.5 mi. south of Ramp 4. Access to this area is already limited by closure BI10-001-B at 0.8 mi south of Ramp 4 for LETEs.

**Anticipated removal date:**

**Removal certification:**

Name

Date

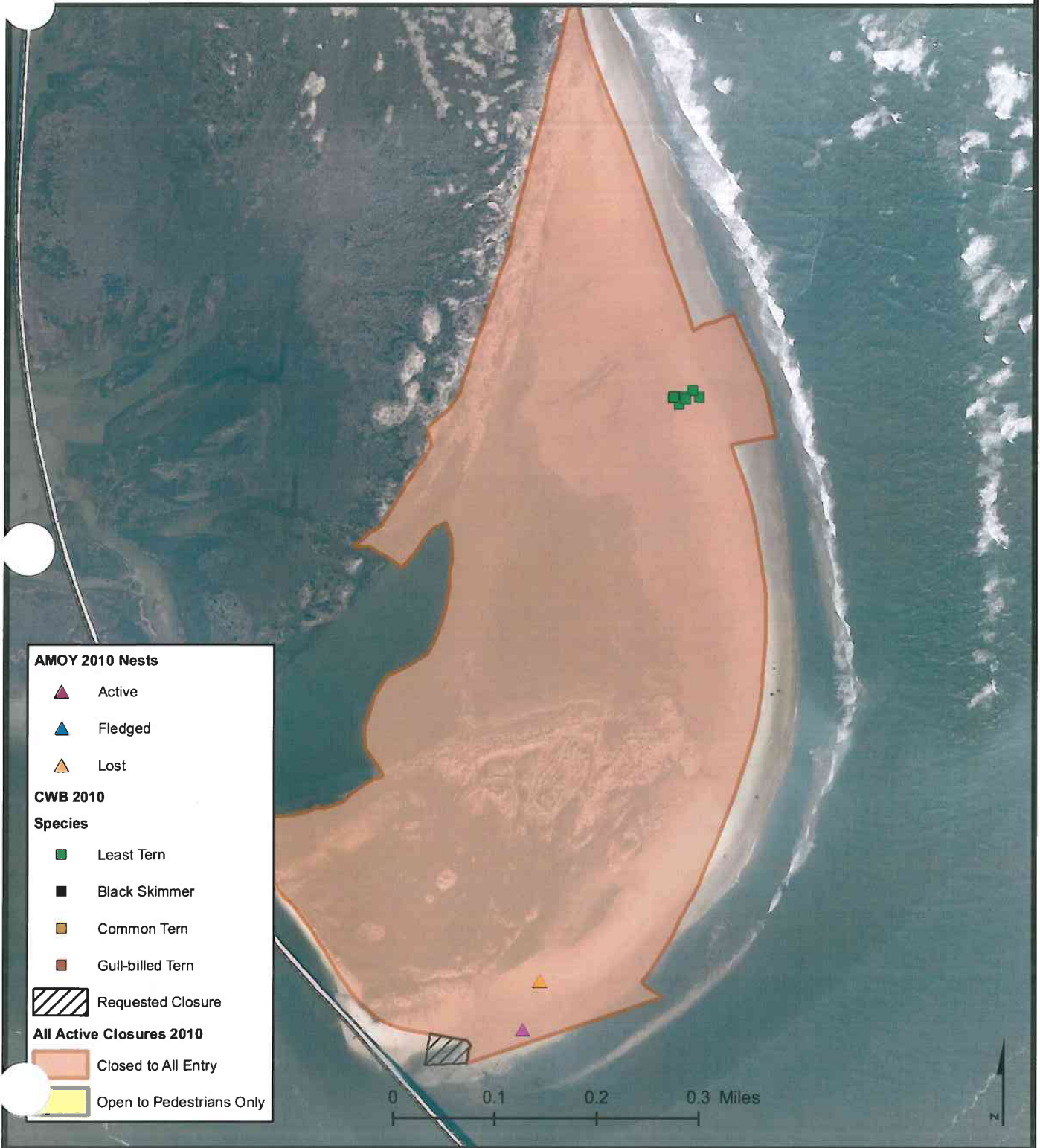
Submitted by P. Doshkov Approved by: B. Muiznieks (Verbally)

M. Murray  
Superintendent

5-18-10  
Date



# 2010 BI10-001-D Closure Request



FILED  
5/28/10  
MP

Number BI10-001-E

Date: 5/27/2010

To: Superintendent, Outer Banks Group  
From: Chief, Resource Management, Outer Banks Group  
Subject: RESOURCE PROTECTION CLOSURE REQUEST

Type of closure:

- breeding (list species LETE)
- non-breeding (list species )
- vegetation/dune (list any T&E species )
- deliberate violation

New Closure -  Modification of Existing Closure -  Removal of Closure

Proposed  Actual Installation date: 5/27/2010

Reason for closure, modification or removal: According to the Consent Decree (Pg. 5, Buffers), NPS "shall establish buffers for observed breeding behavior, including but not limited to territorial behavior, courtship, mating, confirmed scrapes, or other nest-building activities." The Consent Decree also states that the breeding behavior/nest buffer for LETE will be 100 meters.

LETE scrapes were documented within the sand flats E of the Bait Pond.

Physical location: 0.9 mi S of Ramp 4

ORV area -  non-ORV area -  Village -  Day Use Area -  Other( )

Description of Action (If additional space needed, put on separate sheet. Attach map showing sketch of proposed closure with approximate perimeter distances and distance to the tide line if applicable): A 100 meter buffer will be established around the scrape locations resulting in the northern buffer boundary being expanded by 17 meters.

Anticipated removal date:

Removal certification:

Name

Date

Submitted by T. Bogardus Approved by: M. Murray (Verbally)

*Thompson Bevil  
5/28/2010*

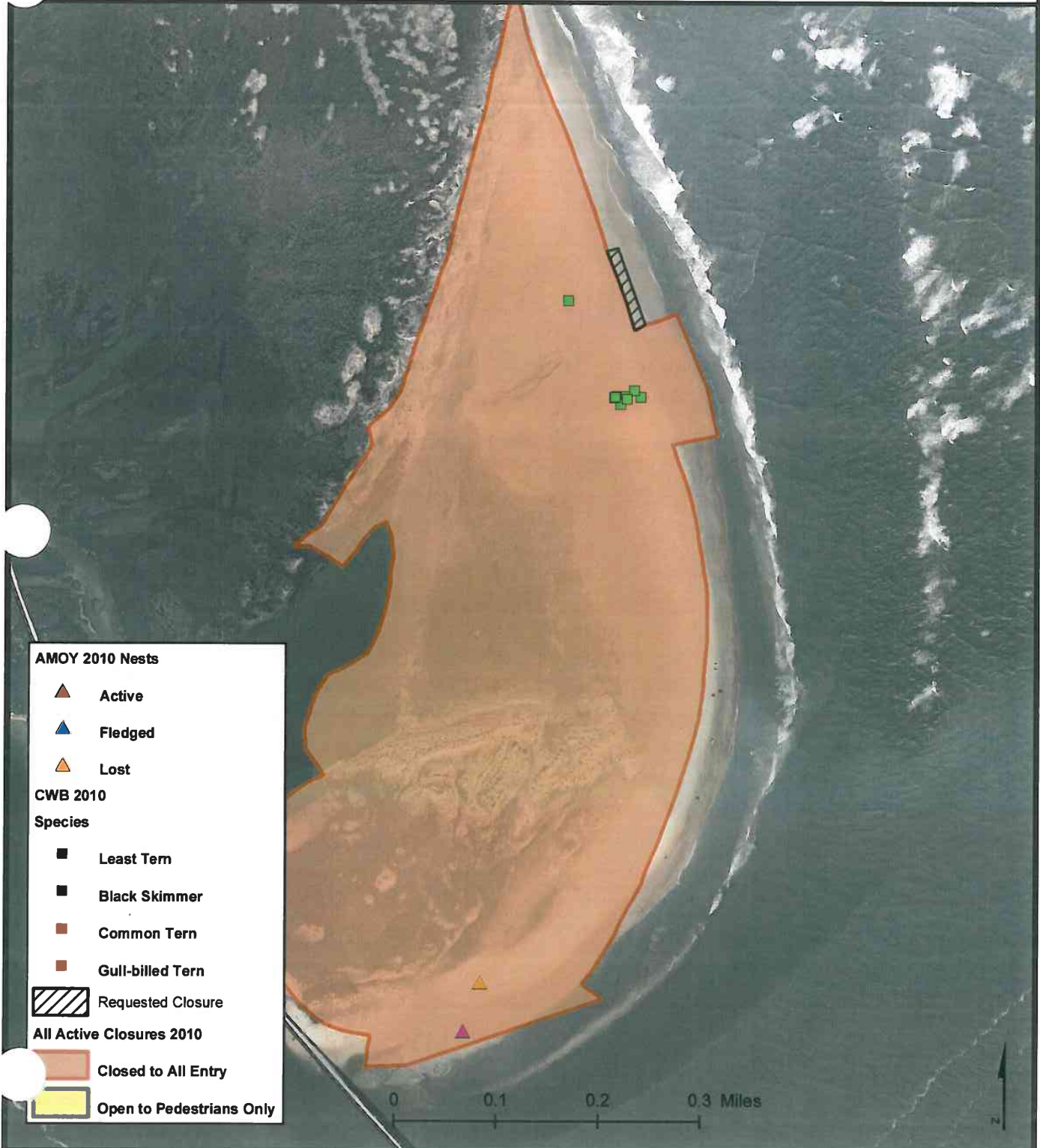
M. Murray  
Superintendent

5-28-10  
Date





# 2010 BI10-001-E Closure Request



**AMOY 2010 Nests**

- ▲ Active
- ▲ Fledged
- ▲ Lost

**CWB 2010 Species**

- Least Tern
- Black Skimmer
- Common Tern
- Gull-billed Tern

**Requested Closure**

- ▨ Requested Closure

**All Active Closures 2010**

- Closed to All Entry
- Open to Pedestrians Only

**FAXED**  
4/3/10  
MK

Number BI10-001-E  
(Revised)

Date: 5/31/2010

To: Superintendent, Outer Banks Group  
From: Chief, Resource Management, Outer Banks Group  
Subject: **RESOURCE PROTECTION CLOSURE REQUEST**

**Type of closure:**

- breeding (list species LETE)
- non-breeding (list species )
- vegetation/dune (list any T&E species )
- deliberate violation

New Closure -  Modification of Existing Closure -  Removal of Closure

Proposed  Actual Installation date: 5/31/2010

**Reason for closure, modification or removal:** According to the Consent Decree (Pg. 5, Buffers), NPS "shall establish buffers for observed breeding behavior, including but not limited to territorial behavior, courtship, mating, confirmed scrapes, or other nest-building activities." The Consent Decree also states that the breeding behavior/nest buffer for LETE will be 100 meters.

LETE scrapes were documented within the sand flats E of the Bait Pond.

**Physical location:** 0.9 mi S of Ramp 4

ORV area -  non-ORV area -  Village -  Day Use Area -  Other( )

**Description of Action (If additional space needed, put on separate sheet. Attach map showing sketch of proposed closure with approximate perimeter distances and distance to the tide line if applicable):** A 100 meter buffer will be established around the scrape locations resulting in the upper beach buffer boundary being expanded by 17 meters towards the high tide line. This is a partial beach closure. Due to a mis-understanding the northern full beach closure boundary that was moved 17 meters to the north on 5/27 will be moved back 17 meters to the south.

**Anticipated removal date:**

**Removal certification:**

Name

Date

Submitted by T. Bogardus Approved by: M. Murray

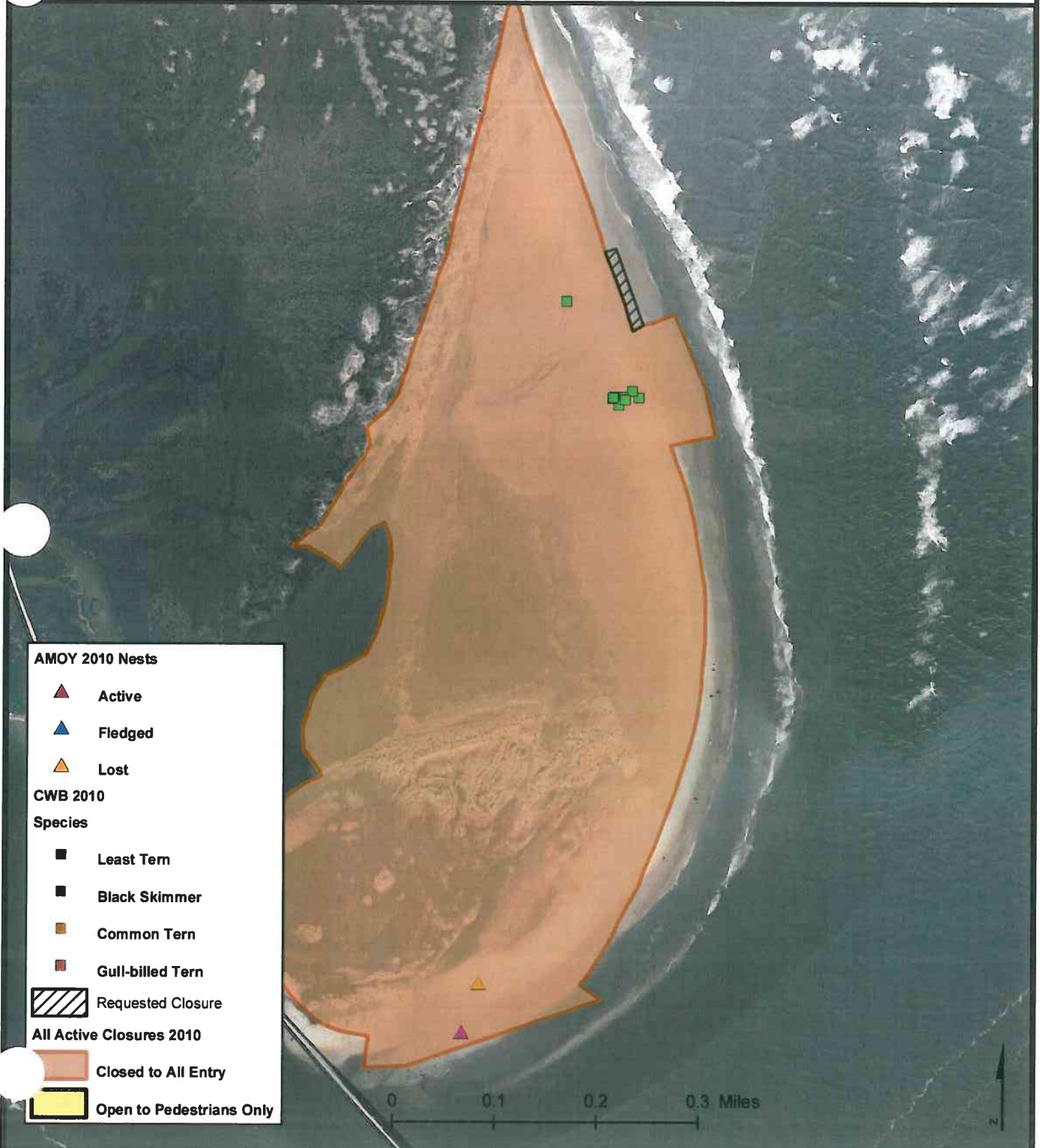
*DM 6/2/10*

*M. Murray*  
\_\_\_\_\_  
Superintendent

*6/2/10*  
\_\_\_\_\_  
Date



# 2010 BI10-001-E Closure Request



**AMOY 2010 Nests**

- ▲ Active
- ▲ Fledged
- ▲ Lost

**CWB 2010**

**Species**

- Least Tern
- Black Skimmer
- Common Tern
- Gull-billed Tern

**All Active Closures 2010**

- ▨ Requested Closure
- Closed to All Entry
- Open to Pedestrians Only



FAXED  
6/7/10  
MR

Number B110-001-F  
(Deliberate Violation)

Date: 6/07/2010

To: Superintendent, Outer Banks Group  
From: Chief, Resource Management, Outer Banks Group  
Subject: RESOURCE PROTECTION CLOSURE REQUEST

Type of closure:

- breeding (list species LETE)
- non-breeding (list species )
- vegetation/dune (list any T&E species )
- deliberate violation

New Closure -  Modification of Existing Closure -  Removal of Closure

Proposed  Actual Installation date: 6/07/2010

Reason for closure, modification or removal: According to the Consent Decree (Pg. 13, Violations of Pre-nesting Areas and Buffers), "At all established pre-nesting areas and buffers, if, in the opinion of NPS, a confirmed deliberate act that disturbs or harasses wildlife or vandalizes fencing, nests, or plants, is documented by NPS personnel, the pre-nesting area or buffer shall be expanded automatically by 50 m.

This area had been closed since May 10th due to the establishment of a LETE colony. On June 6<sup>th</sup> four signs from the northern boundary were pulled and two of these were found broken. Foot prints were also observed within the closure.

Physical location: 0.9 mi S of Ramp 4

ORV area -  non-ORV area -  Village -  Day Use Area -  Other( )

Description of Action (If additional space needed, put on separate sheet. Attach map showing sketch of proposed closure with approximate perimeter distances and distance to the tide line if applicable): The buffer will be expanded to the North by 50 m.

Anticipated removal date:

Removal certification:

Name

Date

Submitted by T. Bogardus Approved by: M. Murray

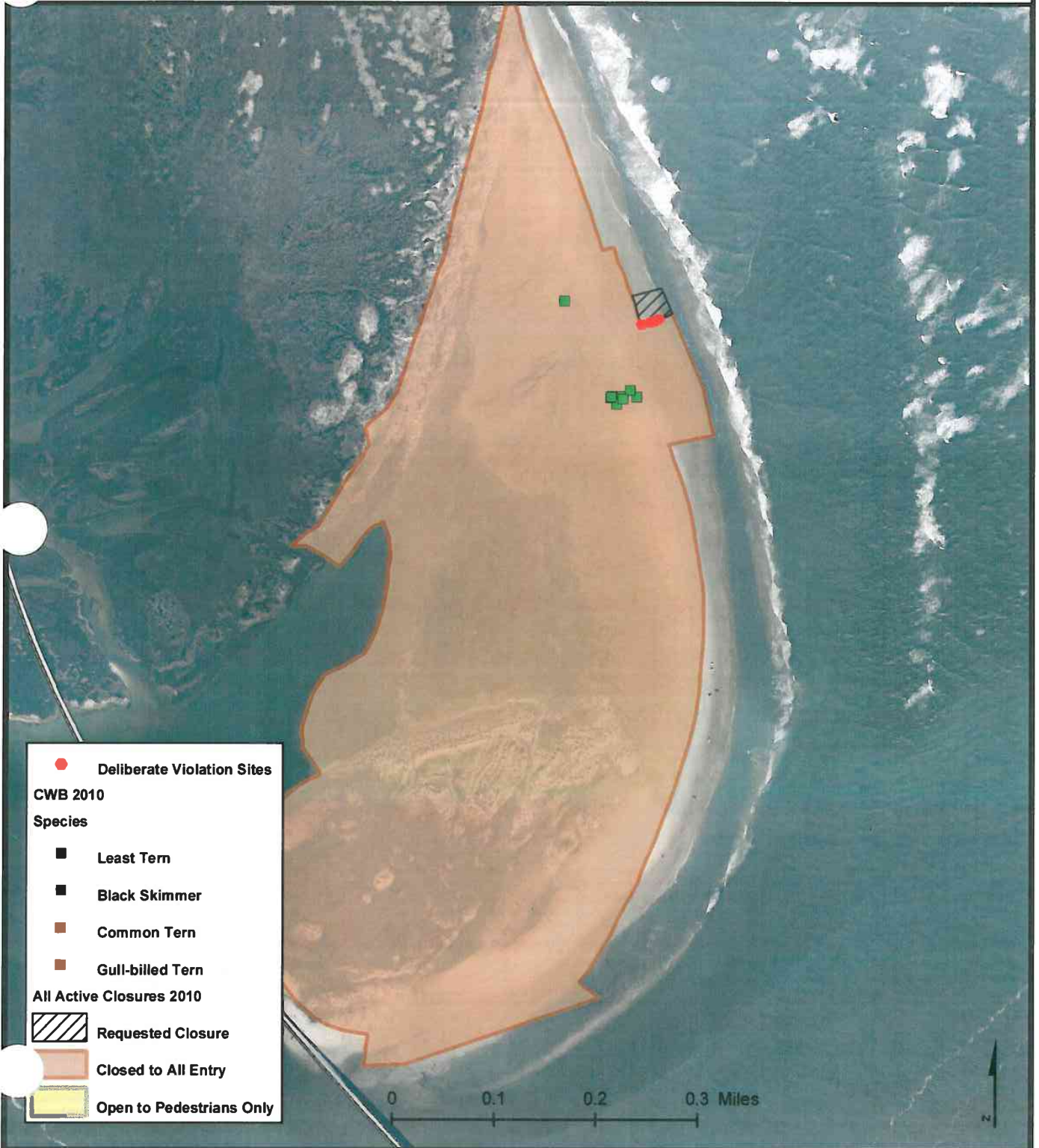
*Thayne Beal*  
6/7/2010

*M. Murray*  
Superintendent

6/7/10  
Date



# 2010 BI10-001-F Closure Request



FAXED  
6/15/10  
MR

Number BI10-001-G

Date: 6/11/2010

To: Superintendent, Outer Banks Group  
From: Chief, Resource Management, Outer Banks Group  
Subject: RESOURCE PROTECTION CLOSURE REQUEST

Type of closure:

- breeding (list species LETE)
- non-breeding (list species )
- vegetation/dune (list any T&E species )
- deliberate violation

New Closure -  Modification of Existing Closure -  Removal of Closure

Proposed  Actual Installation date: 6/11/2010

Reason for closure, modification or removal: According to the Consent Decree (Pg. 5, Buffers), NPS "shall establish buffers for observed breeding behavior, including but not limited to territorial behavior, courtship, mating, confirmed scrapes, or other nest-building activities." The Consent Decree also states that the buffer for LETE chicks will be 200 meters.

Multiple LETE chicks were observed within closure.

Physical location: 0.8 mi S of Ramp 4

ORV area -  non-ORV area -  Village -  Day Use Area -  Other( )

Description of Action (If additional space needed, put on separate sheet. Attach map showing sketch of proposed closure with approximate perimeter distances and distance to the tide line if applicable): The northern and southern boundaries will be expanded to ensure the 200 m buffer.

Anticipated removal date:

Removal certification:

Name

Date

Submitted by T. Bogardus Approved by: M. Murray (Verbally)

*Thompson Brink*  
*6/14/2010*

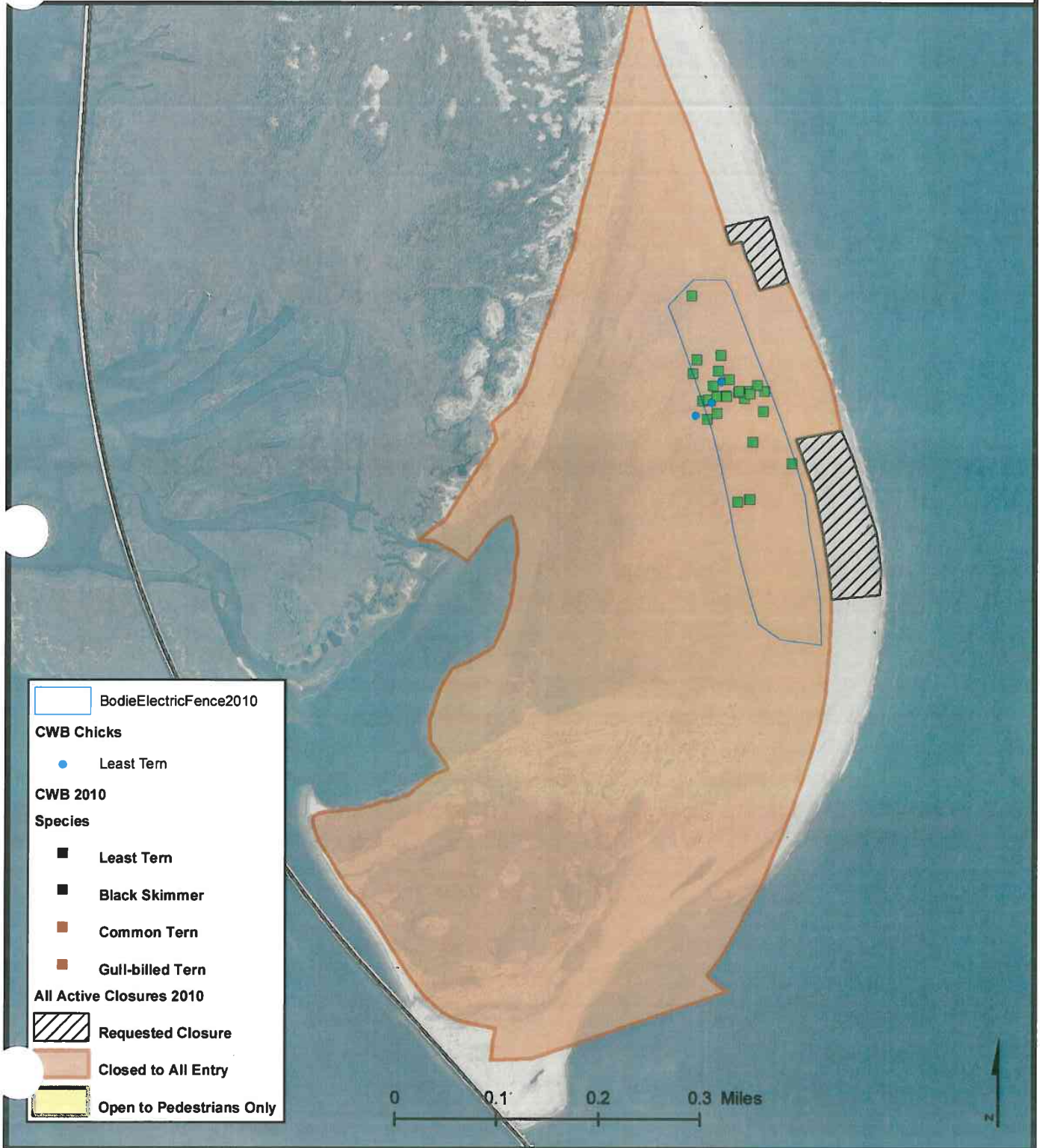
M. Murray  
Superintendent

6/14/10  
Date





# 2010 BI10-001-G Closure Request



FAXED  
6/15/10  
MUR

Number B110-001-H

Date: 6/11/2010

To: Superintendent, Outer Banks Group  
From: Chief, Resource Management, Outer Banks Group  
Subject: RESOURCE PROTECTION CLOSURE REQUEST

Type of closure:

- breeding (list species LETE)
- non-breeding (list species )
- vegetation/dune (list any T&E species )
- deliberate violation

New Closure -  Modification of Existing Closure -  Removal of Closure

Proposed  Actual Installation date: 6/11/2010

Reason for closure, modification or removal: According to the Consent Decree (Pg. 5, Buffers), NPS "shall establish buffers for observed breeding behavior, including but not limited to territorial behavior, courtship, mating, confirmed scrapes, or other nest-building activities." The Consent Decree also states that the breeding behavior/nest buffer for LETE will be 100 meters.

Multiple LETE scrapes were observed within the pre-nesting closure.

Physical location: 1.3 mi S of Ramp 4

ORV area -  non-ORV area -  Village -  Day Use Area -  Other( )

Description of Action (If additional space needed, put on separate sheet. Attach map showing sketch of proposed closure with approximate perimeter distances and distance to the tide line if applicable): The northern boundary of the AMOY closure will be moved to the north to ensure the 100 m LETE buffer.

Anticipated removal date:  
Removal certification:

Name Date

Submitted by T. Bogardus Approved by: M. Murray (Verbally)

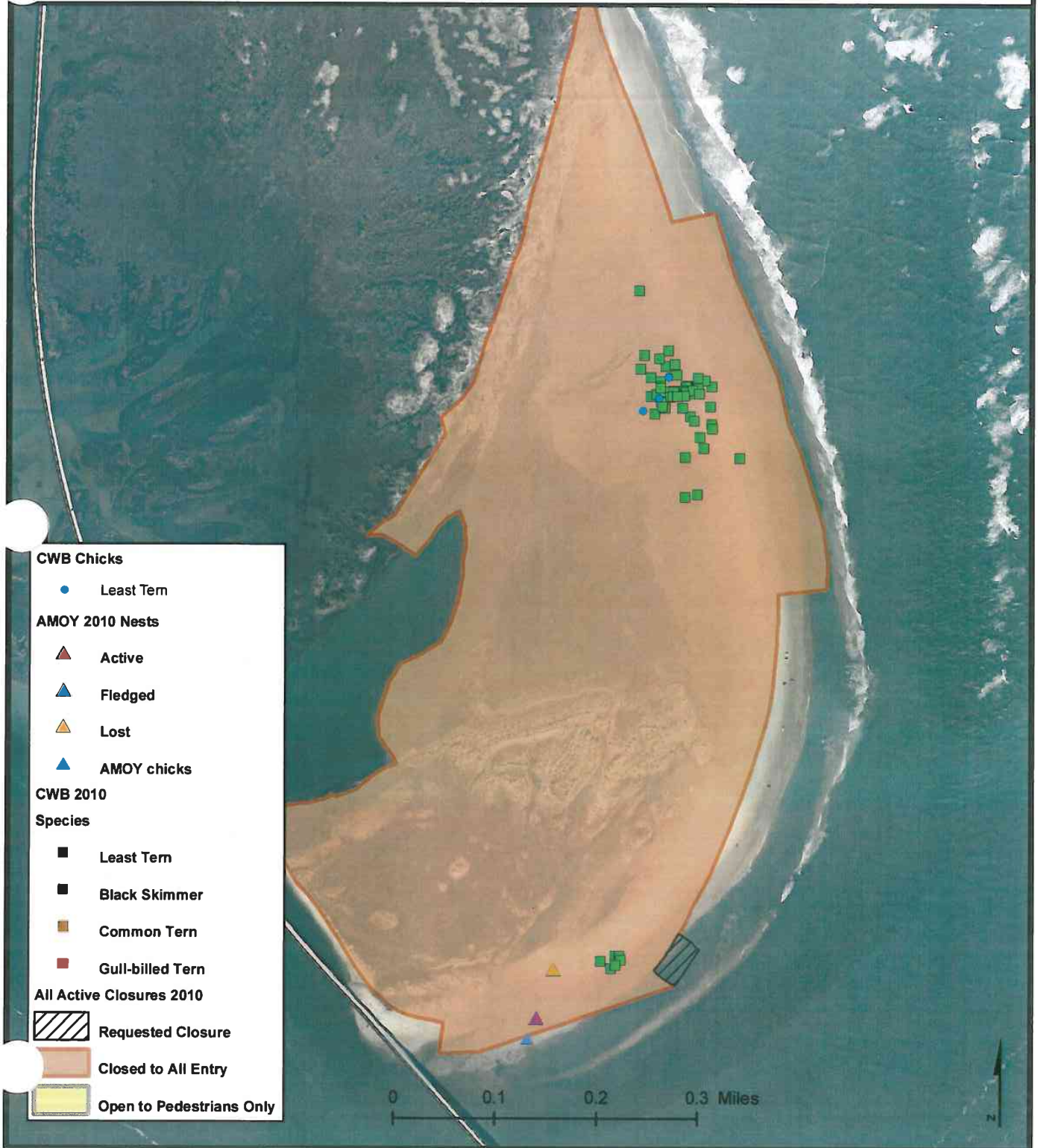
*Thompson*  
*Beach*  
6/15/2010

M. Murray  
Superintendent

6/15/10  
Date



# 2010 BI10-001-H Closure Request





**FAXED**  
6/15/10  
MFR

Number BI10-001-I

Date: 6/12/2010

To: Superintendent, Outer Banks Group  
From: Chief, Resource Management, Outer Banks Group  
Subject: **RESOURCE PROTECTION CLOSURE REQUEST**

**Type of closure:**

- breeding (list species AMOY)
- non-breeding (list species )
- vegetation/dune (list any T&E species )
- deliberate violation

New Closure -  Modification of Existing Closure -  Removal of Closure

Proposed  Actual Installation date: 6/12/2010

**Reason for closure, modification or removal:** According to the Consent Decree (Pg. 5, Buffers), NPS "shall establish buffers for observed breeding behavior, including but not limited to territorial behavior, courtship, mating, confirmed scrapes, or other nest-building activities." The Consent Decree also states that the nest buffer for AMOY chicks will be 200 meters.

The AMOY pair GrC9/UNB has 1 chick on 6/12.

**Physical location:** 2.0 mi S of Ramp 4

ORV area -  non-ORV area -  Village -  Day Use Area -  Other( )

**Description of Action (If additional space needed, put on separate sheet. Attach map showing sketch of proposed closure with approximate perimeter distances and distance to the tide line if applicable):** The closure will be modified to the south by 60m to ensure a 200 meter buffer from the chick, resulting in a full beach closure at ~2.0 mi. south of Ramp 4.

**Anticipated removal date:**

**Removal certification:**

Name

Date

Submitted by P. Doshkov Approved by: B. Muiznieks (Verbally)

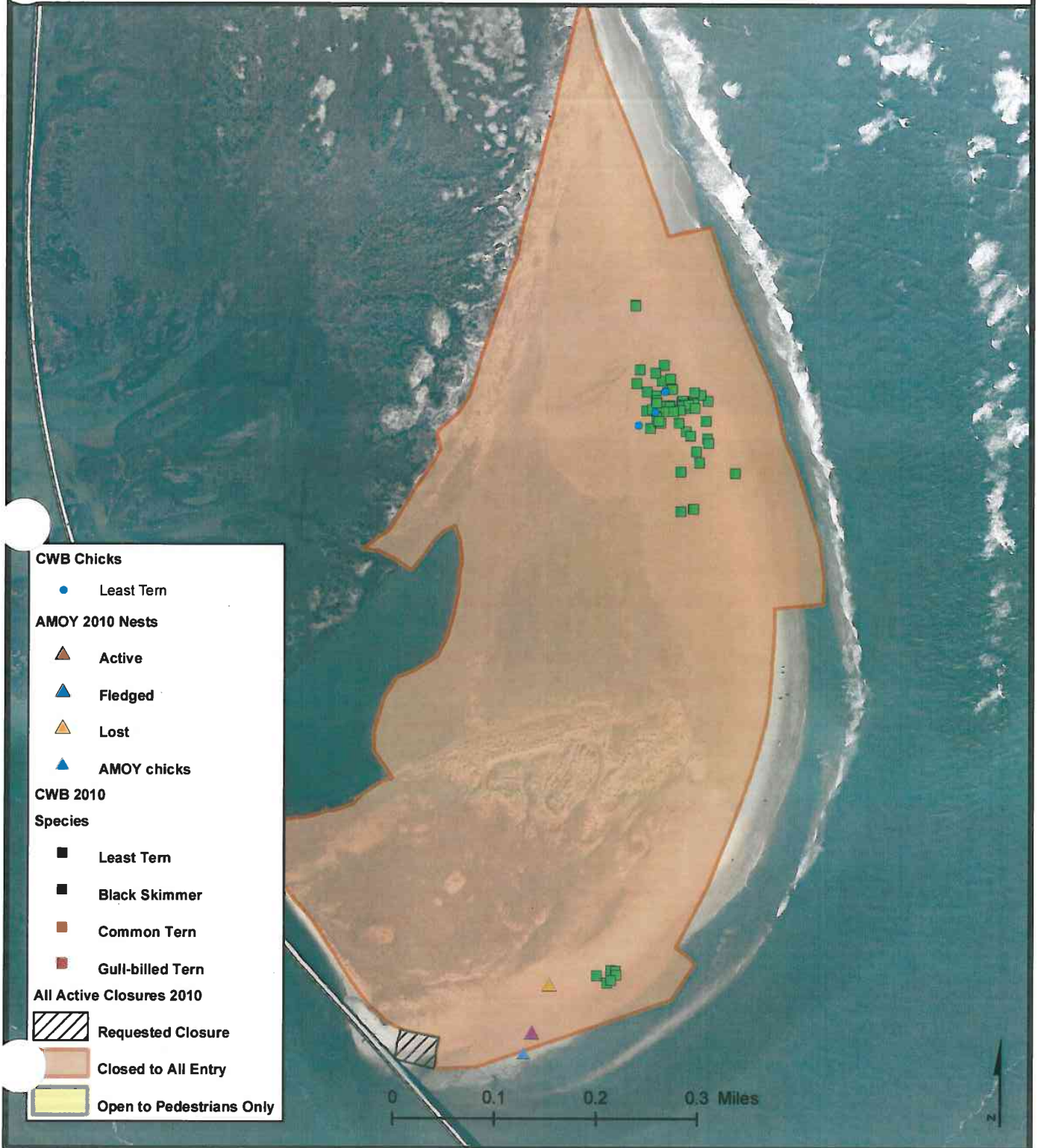
M. Murray  
Superintendent

6/15/10  
Date

*Thayer Bevil*  
6/15/2010



# 2010 BI10-001-I Closure Request



7/9/10  
mf

Number B110-001-J

Date: 7/09/2010

To: Superintendent, Outer Banks Group  
From: Chief, Resource Management, Outer Banks Group  
Subject: RESOURCE PROTECTION CLOSURE REQUEST

Type of closure:

- breeding (list species AMOY, LETE, PIPL)
- non-breeding (list species )
- vegetation/dune (list any T&E species )
- deliberate violation

New Closure -  Modification of Existing Closure -  Removal of Closure

Proposed  Actual Installation date: 07/09/2010

Reason for closure, modification or removal: According to the Consent Decree (Pg. 5, Buffers), NPS "shall establish buffers for observed breeding behavior, including but not limited to territorial behavior, courtship, mating, confirmed scrapes, or other nest-building activities."

No breeding behavior has been observed for PIPLs, AMOYs, and LETEs for over two weeks in this area.

Physical location: 1.6 mi S of Ramp 4

ORV area -  non-ORV area -  Village -  Day Use Area -  Other( )

Description of Action (If additional space needed, put on separate sheet. Attach map showing sketch of proposed closure with approximate perimeter distances and distance to the tide line if applicable): The "bumpout" will be removed and the pre-nesting closure boundary will be re-established. An additional 0.3 mi of shoreline will be re-opened to "limited access". There is still an active LETE colony 0.8-1.2 miles S of Ramp 4 precluding pedestrian and ORV access to this area.

Anticipated removal date:

Removal certification:

Name

Date

*Thayne Boile*  
7/9/10

Submitted by P. Doshkov Approved by:

M. Murray  
Superintendent

7-09-10  
Date





# 2010 BI10-001-J Closure Request



FAXED  
8-30-10

Number BI10-001-K

Date: 8/23/2010

To: Superintendent, Outer Banks Group  
From: Chief, Resource Management, Outer Banks Group  
Subject: RESOURCE PROTECTION CLOSURE REQUEST

Type of closure:

- breeding (list species AMOY, LETE, PIPL)
- non-breeding (list species )
- vegetation/dune (list any T&E species )
- deliberate violation

New Closure -  Modification of Existing Closure -  Removal of Closure

Proposed  Actual Installation date: 8/23/2010

Reason for closure, modification or removal: According to the Consent Decree (Pg. 5, Buffers), NPS "shall establish buffers for observed breeding behavior, including but not limited to territorial behavior, courtship, mating, confirmed scrapes, or other nest-building activities."

No breeding behavior has been observed for PIPLs, AMOYs, and LETEs for over two weeks in this area.

Physical location: 0.8 mi S of Ramp 4

ORV area -  non-ORV area -  Village -  Day Use Area -  Other( )

Description of Action (If additional space needed, put on separate sheet. Attach map showing sketch of proposed closure with approximate perimeter distances and distance to the tide line if applicable): The tern colony at 0.8mi S of R4 has shown no sign of activity for over two weeks. The removal of this closure will open up a ORV/Ped corridor to Bodie Spit. The Pre-nesting closure still remains in place.

Anticipated removal date:

Removal certification:

Name

Date

Thayne Beitch  
8/24/2010

Submitted by M. Piatak Approved by:

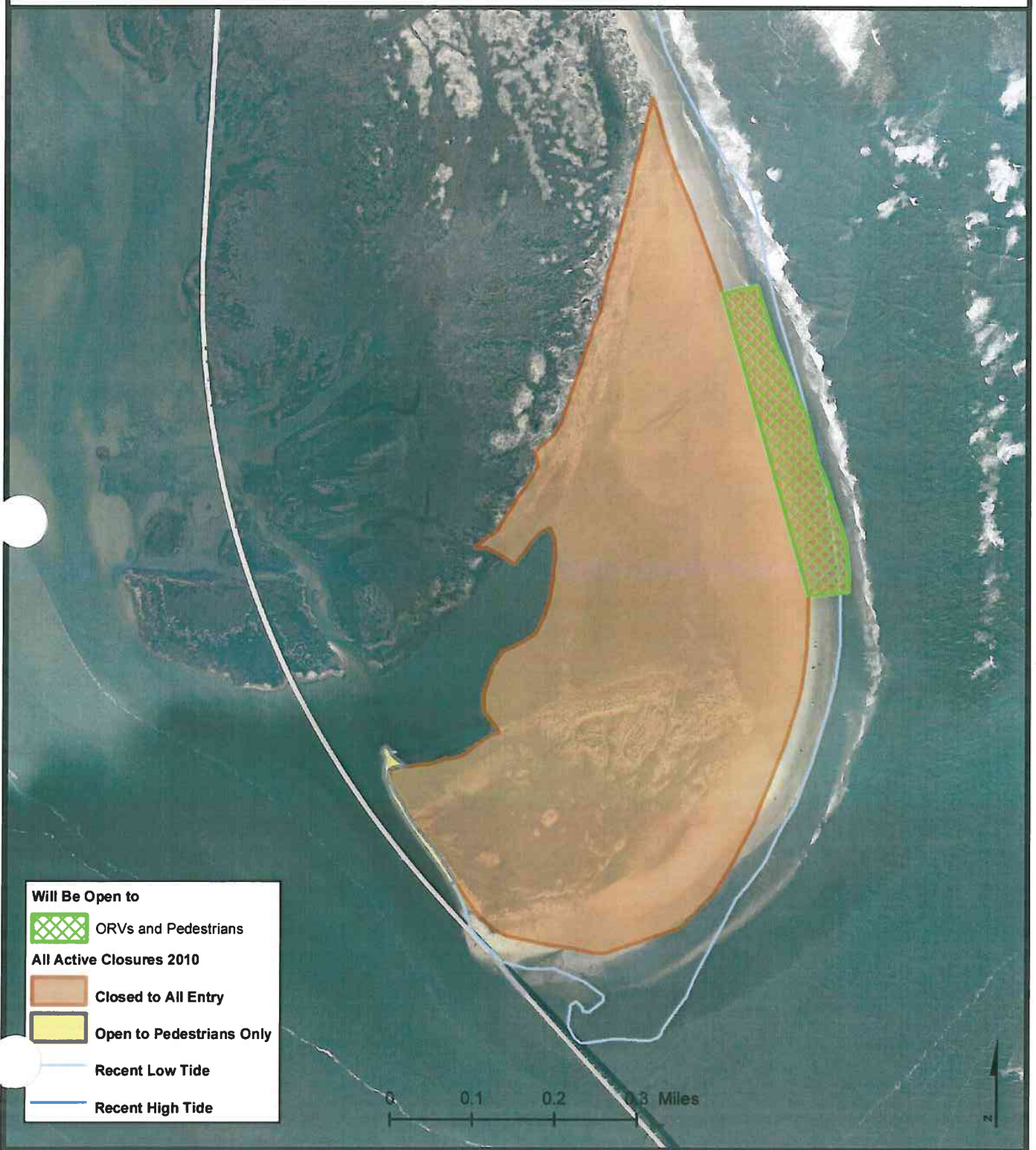
M. Piatak  
Superintendent

8-24-10  
Date





# I10-001-K Closure Request





FAXED  
9/28/10  
WR

Number BI10-001-R

Date: 9/7/2010

To: Superintendent, Outer Banks Group  
From: Chief, Resource Management, Outer Banks Group  
Subject: RESOURCE PROTECTION CLOSURE REQUEST

Type of closure:

- breeding (list species )
- non-breeding (list species PIPL)
- vegetation/dune (list any T&E species )
- deliberate violation

New Closure -  Modification of Existing Closure -  Removal of Closure

Proposed  Actual Installation date:

Reason for closure, modification or removal: No breeding behavior has been observed in over 2 weeks.

The area was surveyed for seabeach amaranth and no plants were found.

Physical location: Bodie Island Spit

ORV area -  non-ORV area -  Village -  Day Use Area -  Other( )

Description of Action (If additional space needed, put on separate sheet. Attach map showing sketch of proposed closure with approximate perimeter distances and distance to the tide line if applicable): The pre-nesting closure will be removed and replaced with the PIPL winter closure.

Anticipated removal date: 9/7/10-9/8/10

Removal certification: B Muiznieks 9/8/2010  
Name Date

Submitted by B Muiznieks Approved by: M Murray (Verbal)

*Change Built  
9/8/2010*

*M Murray* Superintendent 9/8/10 Date

FAXED  
4/18/10  
MR

Number BI10-002

Date: 4/16/2010

To: Superintendent, Outer Banks Group  
From: Chief, Resource Management, Outer Banks Group  
Subject: RESOURCE PROTECTION CLOSURE REQUEST

Type of closure:

- breeding (list species AMOY)
- non-breeding (list species )
- vegetation/dune (list any T&E species )
- deliberate violation

New Closure -  Modification of Existing Closure -  Removal of Closure

Proposed  Actual Installation date: 4/16/2010

**Reason for closure, modification or removal:** According to the Consent Decree (Pg. 5, Buffers), NPS "shall establish buffers for observed breeding behavior, including but not limited to territorial behavior, courtship, mating, confirmed scrapes, or other nest-building activities." The Consent Decree also states that the breeding behavior/nest buffer for American oystercatchers will be 150 meters.

A single scrape was observed for AMOY breeding pair UNB/UNB on the N side of the Bait Pond West of the Bonner Bridge. In 2009, a pair (assumed to be the same pair) scraped on the N side of the Bait Pond but eventually nested on the SE side of the Bait Pond inside the pre-nesting closure.

**Physical location:** N side of Bait Pond under Bridge

ORV area -  non-ORV area -  Village -  Day Use Area -  Other( )

**Description of Action (If additional space needed, put on separate sheet. Attach map showing sketch of proposed closure with approximate perimeter distances and distance to the tide line if applicable):** A buffer will be installed around the scrape location. Signage will include Carsonite, "No Landing" signs, and "Area Closed" bird signs. It will not be possible to install a 150 meter buffer since the scrape location is very near the high-tide line and deep water. Difficulty accessing this area and erosion at the shoreline may make it difficult to maintain signage in this area.

**Anticipated removal date:**

**Removal certification:**

Name

Date

Submitted by T. Bogardus Approved by: D. Echols (verbally on conf. call)

for Thayne Seale  
Superintendent

4/19/10  
Date



# 2010 BI10-002 Closure Request





FAXED  
5/26/10  
MR

Number BI10-002-R

Date: 5/25/2010

To: Superintendent, Outer Banks Group  
From: Chief, Resource Management, Outer Banks Group  
Subject: RESOURCE PROTECTION CLOSURE REQUEST

Type of closure:

- breeding (list species AMOY)
- non-breeding (list species )
- vegetation/dune (list any T&E species )
- deliberate violation

New Closure -  Modification of Existing Closure -  Removal of Closure

Proposed  Actual Installation date: ~~5/25/2010~~

Reason for closure, modification or removal: Last scrape was observed on 4/28. Area is subject to routine overwash. The pair has not been observed in area since 5/12.

Physical location: N side of Bait Pond under Bridge

ORV area -  non-ORV area -  Village -  Day Use Area -  Other( )

Description of Action (If additional space needed, put on separate sheet. Attach map showing sketch of proposed closure with approximate perimeter distances and distance to the tide line if applicable): The closure was removed.

Anticipated removal date:

Removal certification: T. Bogardus  
Name

Date 5/25/10

Submitted by T. Bogardus Approved by: T. Bogardus

*Therese Beardsley*  
5/25/2010

M. Munnery  
Superintendent

5/25/10  
Date