

Number GI-11-001

Date: 3/18/11

To: Superintendent, Outer Banks Group
From: Chief, Resource Management, Outer Banks Group
Subject: RESOURCE PROTECTION CLOSURE REQUEST

Type of closure:

- breeding (list species AMOY)
- non-breeding (list species)
- vegetation/dune (list any T&E species)
- deliberate violation

New Closure - Modification of Existing Closure - Removal of Closure

Proposed Actual Installation date: 3/18/11

Reason for closure, modification or removal: The Consent Decree states that "NPS also shall establish buffers for observed breeding behavior, including but not limited to territorial behavior, courtship, mating, confirmed scrapes, or other nest-building activities."

Two AMOY scrapes were documented on Green Island.

Physical location: Green Island.

ORV area - non-ORV area - Village - Day Use Area - Other(Boat access)

Description of Action (If additional space needed, put on separate sheet. Attach map showing sketch of proposed closure with approximate perimeter distances and distance to the tide line if applicable): No Landing signs were placed around the perimeter of Green Island.

Anticipated removal date:

Removal certification:

Name

Date

Submitted by M. Piatak Approved by: B. Muiznieks

Superintendent

Date

Number BI-11-001

Date: 3/7/2011

To: Superintendent, Outer Banks Group
From: Chief, Resource Management, Outer Banks Group
Subject: RESOURCE PROTECTION CLOSURE REQUEST

Type of closure:

- breeding (list species PIPL)
- non-breeding (list species)
- vegetation/dune (list any T&E species)
- deliberate violation

New Closure - Modification of Existing Closure - Removal of Closure

Proposed Actual Installation date: 3/9/2011

Reason for closure, modification or removal: The Consent Decree states that the pre-nesting closures for PIPL must be installed no later than 3/15.

Physical location: Bodie Island Spit

ORV area - non-ORV area - Village - Day Use Area - Other()

Description of Action (If additional space needed, put on separate sheet. Attach map showing sketch of proposed closure with approximate perimeter distances and distance to the tide line if applicable): The pre-nesting closure will begin 0.6 mi south of Ramp 4 (at the northern tip of the large over wash area). A 100-foot corridor will allow an ocean-side ORV and pedestrian access corridor south to the inlet near Bonner Bridge where pedestrian-only access extends northwesterly to the edge of the Bait Pond.

Anticipated removal date:

Removal certification:

Name

Date

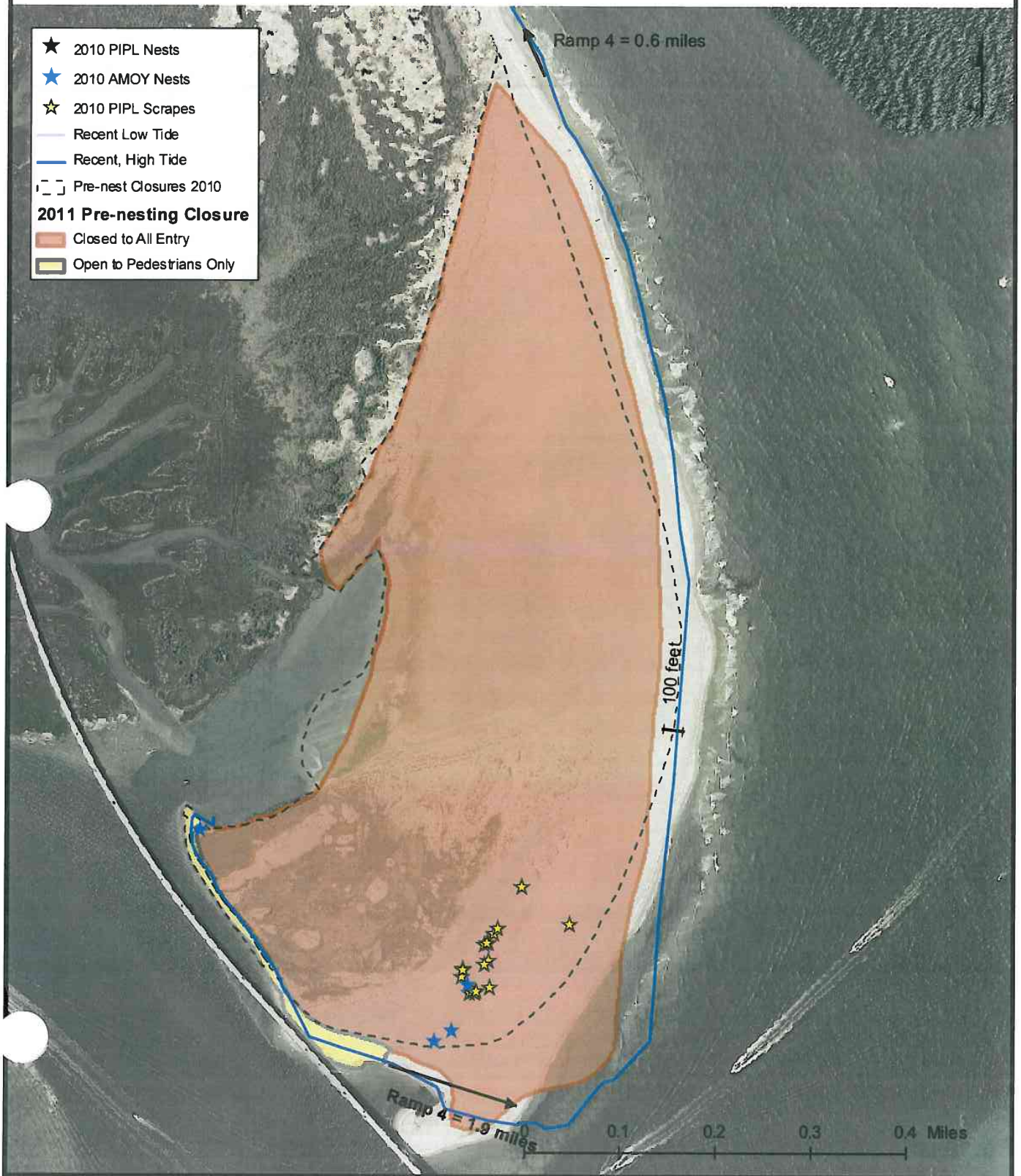
Submitted by M. Piatak Approved by:

Superintendent

Date



.011 Bodie Island Spit Pre-nesting Closure As Installed



Number GI-11-001-R

Date: 8/19/11

To: Superintendent, Outer Banks Group
From: Chief, Resource Management, Outer Banks Group
Subject: RESOURCE PROTECTION CLOSURE REQUEST

Type of closure:

- breeding (list species CWB)
- non-breeding (list species)
- vegetation/dune (list any T&E species)
- deliberate violation

New Closure - Modification of Existing Closure - Removal of Closure

Proposed Actual Installation date:

Reason for closure, modification or removal: The Consent Decree states that "NPS also shall establish buffers for observed breeding behavior, including but not limited to nests and chicks."

No CWB nests or chicks have been observed for over two weeks.

Area was surveyed for Sea Beach Amaranth. No plants were found

Physical location: Green Island.

ORV area - non-ORV area - Village - Day Use Area - Other(Boat access)

Description of Action (If additional space needed, put on separate sheet. Attach map showing sketch of proposed closure with approximate perimeter distances and distance to the tide line if applicable): The No Landing signs were removed around the perimeter of Green Island.

Anticipated removal date:

Removal certification: M. Piatak
Name

8/19/11
Date

Thayer Brink
8/19/2011

Submitted by M. Piatak Approved by: B. Muiznieks

Superintendent

Date

FAX 5/3/11
MP

Number BI-11-001-A

Date: 5/1/2011

To: Superintendent, Outer Banks Group
From: Chief, Resource Management, Outer Banks Group
Subject: RESOURCE PROTECTION CLOSURE REQUEST

Type of closure:

- breeding (list species AMOY)
- non-breeding (list species)
- vegetation/dune (list any T&E species)
- deliberate violation

New Closure - Modification of Existing Closure - Removal of Closure

Proposed Actual Installation date: 5/1/2011

Reason for closure, modification or removal: The Consent Decree states that the confirmed scrape buffer for American oystercatchers will be 150 m for ORVs and pedestrians.

A scrape was discovered for known breeding pair GrC9 and UNB. This pair nested in the same location in 2010.

Physical location: 1.6 miles south of Ramp 4

ORV area - non-ORV area - Village - Day Use Area - Other()

Description of Action (If additional space needed, put on separate sheet. Attach map showing sketch of proposed closure with approximate perimeter distances and distance to the tide line if applicable): The closure will begin 1.6 mi south of Ramp 4 and extends for approximately 0.2 miles of shoreline parallel to the Bonner Bridge with limited access beyond the closure.

Anticipated removal date:

Removal certification:

Name

Date

Thompson 5/31/2011

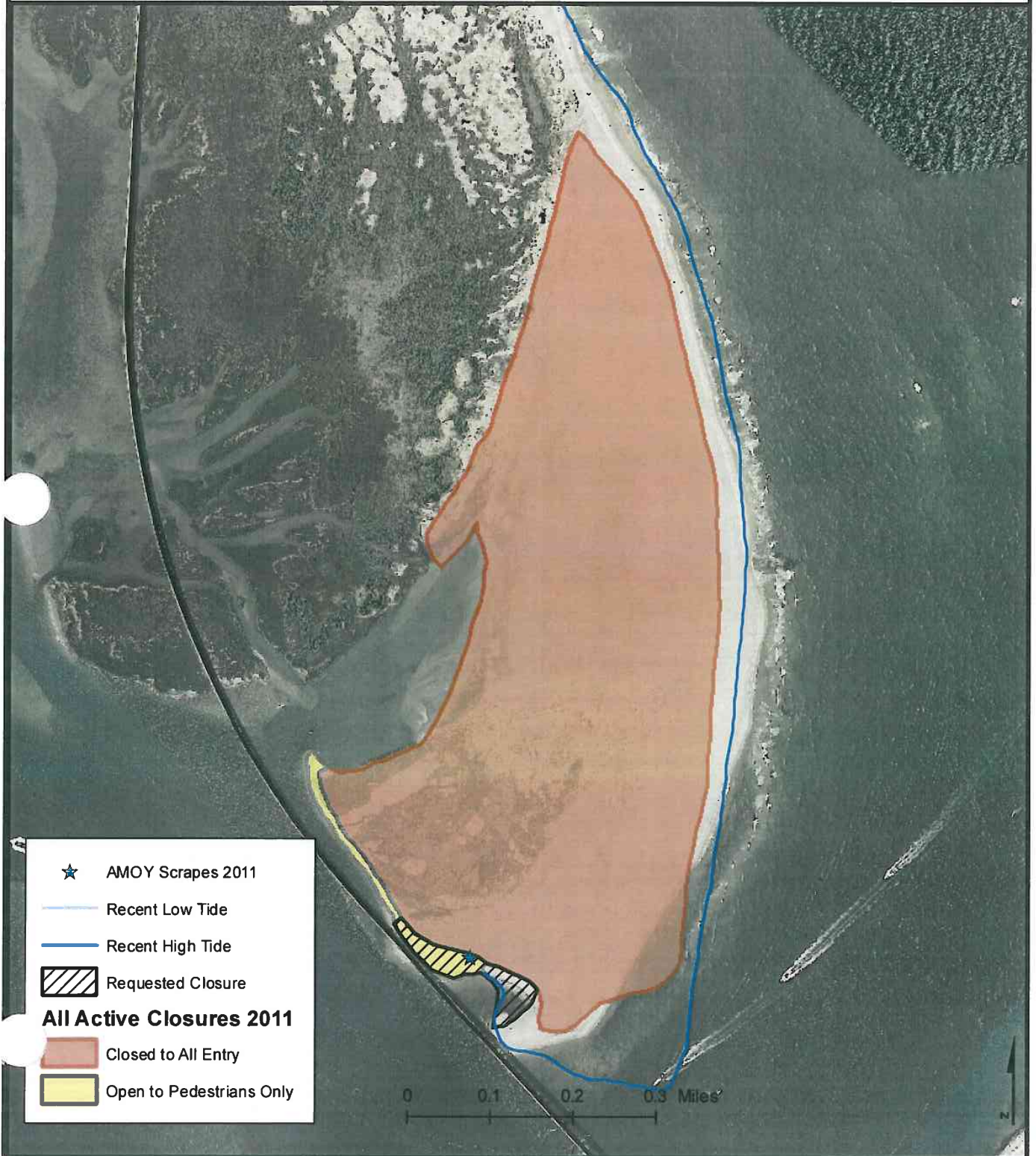
Submitted by M. Piatak Approved by: D. Echols (verbally)

M. Murray
Superintendent

5-3-11
Date



2011 BI-11-001-A Closure Request



FAXED
5/6/11

MR

Number BI11-001-B

Date: 5/06/2011

To: Superintendent, Outer Banks Group
From: Chief, Resource Management, Outer Banks Group
Subject: RESOURCE PROTECTION CLOSURE REQUEST

Type of closure:

- breeding (list species LETE)
- non-breeding (list species)
- vegetation/dune (list any T&E species)
- deliberate violation

New Closure - Modification of Existing Closure - Removal of Closure

Proposed Actual Installation date: 5/6/2011

Reason for closure, modification or removal: According to the Consent Decree (Pg. 5, Buffers), NPS "shall establish buffers for observed breeding behavior, including but not limited to territorial behavior, courtship, mating, confirmed scrapes, or other nest-building activities." The Consent Decree also states that the breeding behavior/nest buffer for LETE will be 100 meters.

Over 100 LETE scrapes and 3 one-egg nests were documented within the sand flats E of the Bait Pond.

Physical location: 0.8 mi S of Ramp 4

ORV area - non-ORV area - Village - Day Use Area - Other()

Description of Action (If additional space needed, put on separate sheet. Attach map showing sketch of proposed closure with approximate perimeter distances and distance to the tide line if applicable): A 100 meter buffer will be established around the scrape and nest locations resulting in a full beach closure of ~0.4 mi. The buffer will result in the closure of Bodie Island Spit to ORVs and pedestrians ~0.8 mi S of Ramp 4. There is "limited access" south of the closure.

Anticipated removal date:

Removal certification:

Name

Date

Submitted by B. Muiznieks Approved by: M. Murray (Verbally)

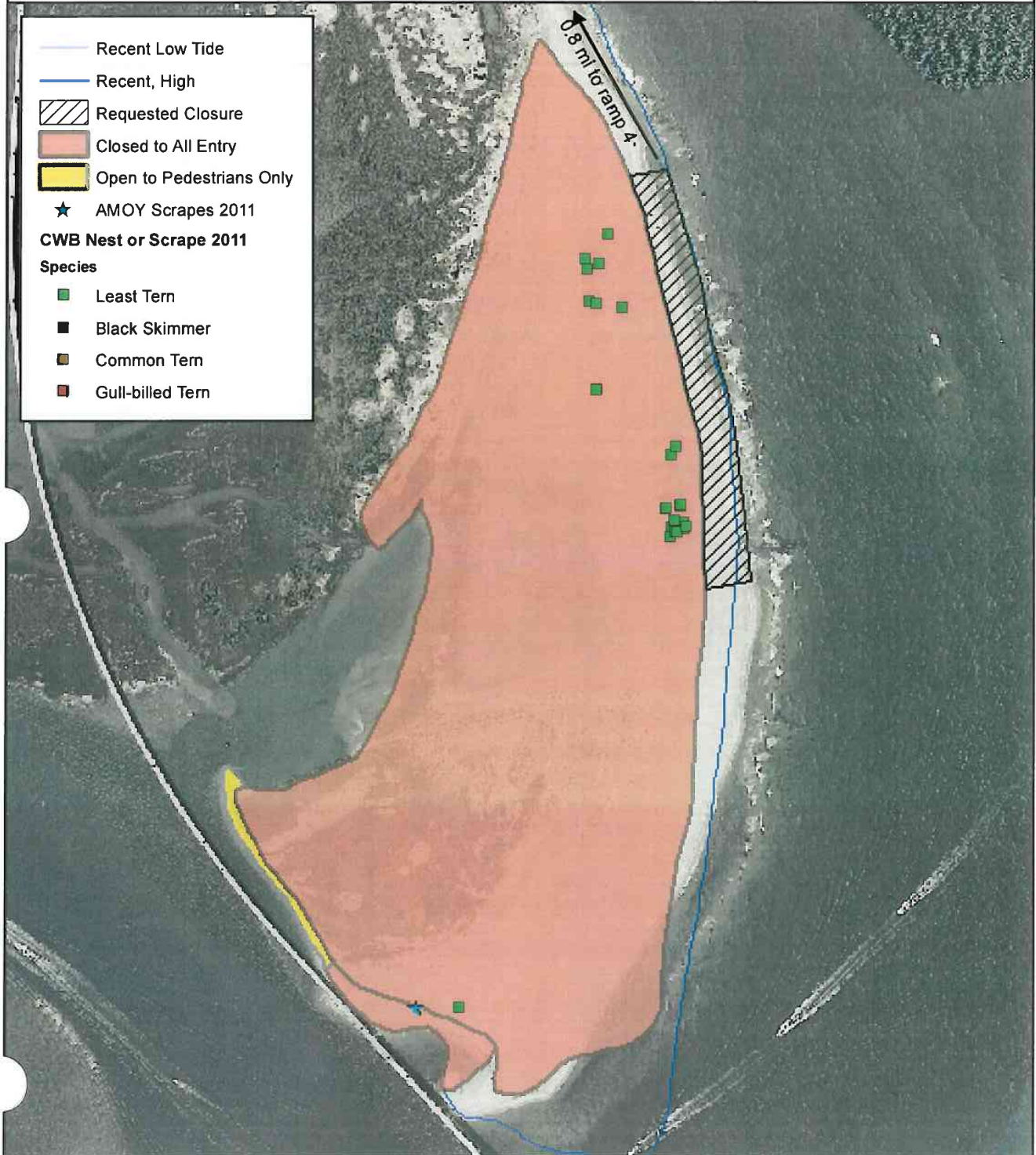
Thayne Brodie
5/6/2011

M. Murray
Superintendent

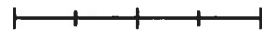
5-06-11
Date



Closure Request Map - 20110506 BI-11-001-B



- Recent Low Tide
- Recent, High
- Requested Closure
- Closed to All Entry
- Open to Pedestrians Only
- ★ AMOY Scrapes 2011
- CWB Nest or Scrape 2011
- Species
 - Least Tern
 - Black Skimmer
 - Common Tern
 - Gull-billed Tern



FAXED
5/27/11
MK

Number BI-11-001-C

Date: 5/26/2011

To: Superintendent, Outer Banks Group
From: Chief, Resource Management, Outer Banks Group
Subject: RESOURCE PROTECTION CLOSURE REQUEST

Type of closure:

- breeding (list species AMOY)
- non-breeding (list species)
- vegetation/dune (list any T&E species)
- deliberate violation

New Closure - Modification of Existing Closure - Removal of Closure

Proposed Actual Installation date: 5/26/2011

Reason for closure, modification or removal: The Consent Decree states that NPS "shall establish buffers for observed breeding behavior, including but not limited to territorial behavior, courtship, mating, confirmed scrapes, or other nest-building activities." The Consent Decree also states that the breeding behavior/nest buffer for American oystercatchers will be 150 meters.

A one egg nests was discovered for known breeding pair GrC9 and UNB. This pair nested in the same general location in 2010.

Physical location: 1.6 miles south of Ramp 4

ORV area - non-ORV area - Village - Day Use Area - Other()

Description of Action (If additional space needed, put on separate sheet. Attach map showing sketch of proposed closure with approximate perimeter distances and distance to the tide line if applicable): The closure that was established for a scrape for this pair will be shifted to the southeast. The closure will begin 1.6 mi south of Ramp 4 and extend for approximately 0.2 miles of shoreline parallel to the Bonner Bridge. There will be limited access areas on both sides of this closure.

Anticipated removal date:

Removal certification:

Name

Date

Thay Bevil
5/26/2011

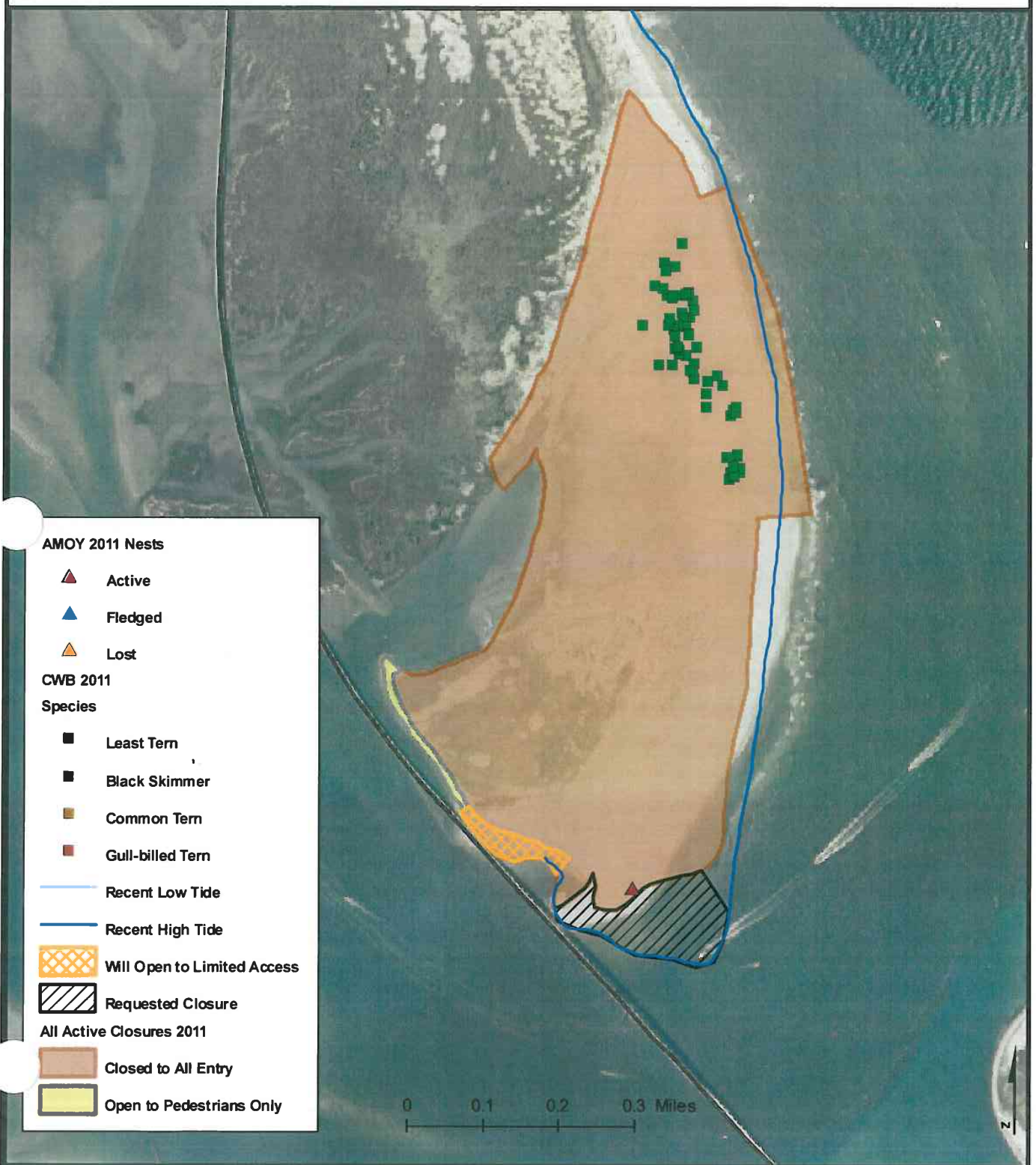
Submitted by B. Muiznieks Approved by: M. Murray (Verbally)

M. Murray
Superintendent

5/26/11
Date



011 BI-11-001-C Closure Request



AMOY 2011 Nests

- ▲ Active
- ▲ Fledged
- ▲ Lost

CWB 2011

Species

- Least Tern
- Black Skimmer
- Common Tern
- Gull-billed Tern

— Recent Low Tide

— Recent High Tide

Will Open to Limited Access

Requested Closure

All Active Closures 2011

Closed to All Entry

Open to Pedestrians Only

0 0.1 0.2 0.3 Miles

hand delivered

Number BI11-001-D

Date: 5/31/2011

To: Superintendent, Outer Banks Group
From: Chief, Resource Management, Outer Banks Group
Subject: RESOURCE PROTECTION CLOSURE REQUEST

Type of closure:

- breeding (list species LETE)
- non-breeding (list species)
- vegetation/dune (list any T&E species)
- deliberate violation

New Closure - Modification of Existing Closure - Removal of Closure

Proposed Actual Installation date: 5/31/2011

Reason for closure, modification or removal: According to the Consent Decree (Pg. 5, Buffers), NPS "shall establish buffers for observed breeding behavior, including but not limited to territorial behavior, courtship, mating, confirmed scrapes, or other nest-building activities." The Consent Decree also states that the breeding behavior/nest buffer for COTE will be 200 meters.

A mixed colony of LETE and COTE has formed on Bodie Spit.

Physical location: 0.8 mi S of Ramp 4

ORV area - non-ORV area - Village - Day Use Area - Other()

Description of Action (If additional space needed, put on separate sheet. Attach map showing sketch of proposed closure with approximate perimeter distances and distance to the tide line if applicable): A 200 meter buffer will be established around the scrape and nest locations resulting in a full beach closure of ~0.4 mi. The buffer will result in the closure of Bodie Island Spit to ORVs and pedestrians ~0.8 mi S of Ramp 4. There is "limited access" south of the closure.

Anticipated removal date:

Removal certification:

Name

Date

Submitted by B. Muiznieks Approved by: M. Murray (Verbally)

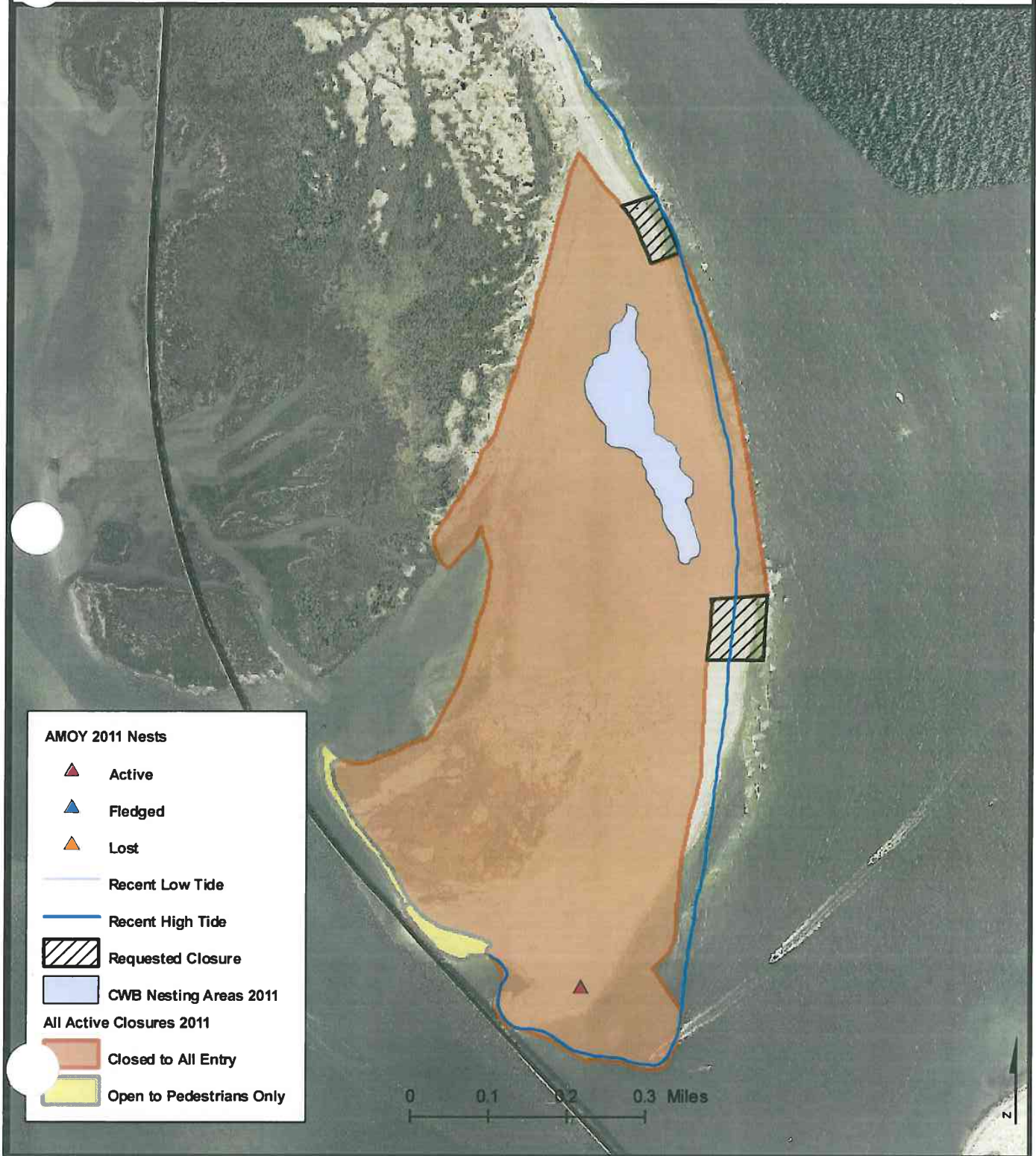
Thayne Bintl
6/1/2011

M Murray
Superintendent

6/01/11
Date



2011 BI-11-001-D Closure Request



AMOY 2011 Nests

- ▲ Active
- ▲ Fledged
- ▲ Lost

— Recent Low Tide

— Recent High Tide

▨ Requested Closure

□ CWB Nesting Areas 2011

All Active Closures 2011

- Closed to All Entry
- Open to Pedestrians Only

hand delivered

Number BI11-001-E

Date: 6/09/2011

To: Superintendent, Outer Banks Group
From: Chief, Resource Management, Outer Banks Group
Subject: RESOURCE PROTECTION CLOSURE REQUEST

Type of closure:

- breeding (list species AMOY)
- non-breeding (list species)
- vegetation/dune (list any T&E species)
- deliberate violation

New Closure - Modification of Existing Closure - Removal of Closure

Proposed Actual Installation date: 6/09/2011

Reason for closure, modification or removal: According to the Consent Decree (Pg. 5, Buffers), NPS "shall establish buffers for observed breeding behavior, including but not limited to territorial behavior, courtship, mating, confirmed scrapes, or other nest-building activities." The Consent Decree also states that the breeding behavior/scrape buffer for AMOY will be 150 meters.

A mixed colony of LETE and COTE has formed on Bodie Spit.

Physical location: 0.6 mi S of R4

ORV area - non-ORV area - Village - Day Use Area - Other()

Description of Action (If additional space needed, put on separate sheet. Attach map showing sketch of proposed closure with approximate perimeter distances and distance to the tide line if applicable): A 150 meter buffer will be established around the scrape locations resulting in a full beach closure of ~0.2 mi. The buffer will result in the closure of Bodie Island Spit to ORVs and pedestrians ~0.6 mi S of Ramp 4. There is "limited access" south of the closure.

Anticipated removal date:

Removal certification:

Name

Date

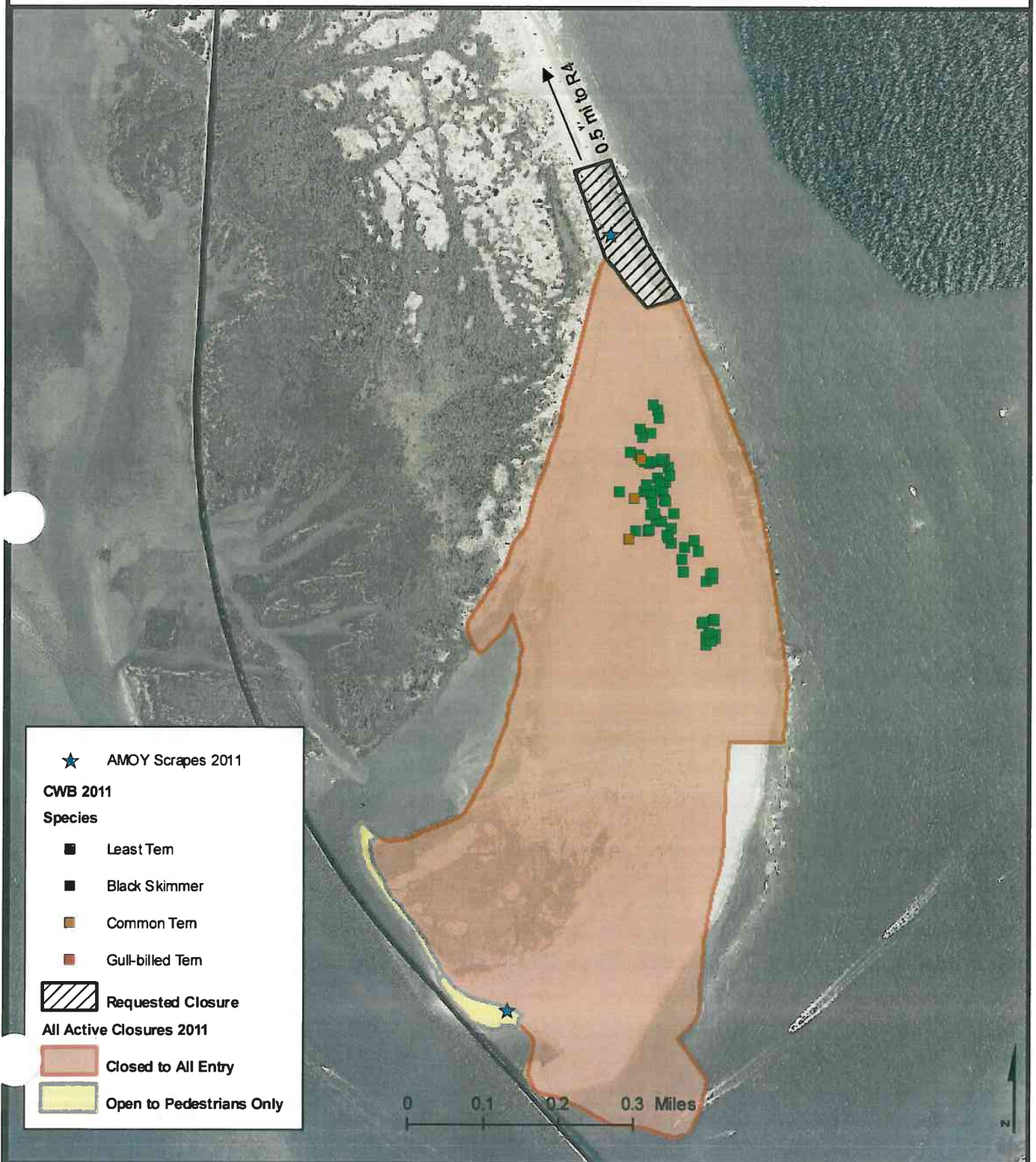
*Thompson Binkley
6/10/2011*

Submitted by B. Muiznieks Approved by: M. Murray (Verbally)

M. Murray Date 6-10-11
Superintendent



011 BH-11-001-E Closure Request



hand delivered

Number BI-11-001-F

Date: 6/24/2011

To: Superintendent, Outer Banks Group
From: Chief, Resource Management, Outer Banks Group
Subject: RESOURCE PROTECTION CLOSURE REQUEST

Type of closure:

- breeding (list species AMOY)
- non-breeding (list species)
- vegetation/dune (list any T&E species)
- deliberate violation

New Closure - Modification of Existing Closure - Removal of Closure

Proposed Actual Installation date: 6/24/2011

Reason for closure, modification or removal: The Consent Decree states that NPS "shall establish buffers for observed breeding behavior, including but not limited to territorial behavior, courtship, mating, confirmed scrapes, or other nest-building activities." The Consent Decree also states that the chick buffer for American oystercatchers will be 200 meters.

The chick for AMOY pair GrC9 and UNB hatched on 6/21 and is now moving away from the nest location.

Physical location: 1.6 miles south of Ramp 4

ORV area - non-ORV area - Village - Day Use Area - Other()

Description of Action (If additional space needed, put on separate sheet. Attach map showing sketch of proposed closure with approximate perimeter distances and distance to the tide line if applicable): The closure will be expanded to maintain a 200 m buffer around the chick. The closure will begin 1.6 mi south of Ramp 4 and extend for approximately 0.3 miles of shoreline . There will be limited access areas on both sides of this closure.

Anticipated removal date:

Removal certification:

Name

Date

Therese Bink
6/28/2011

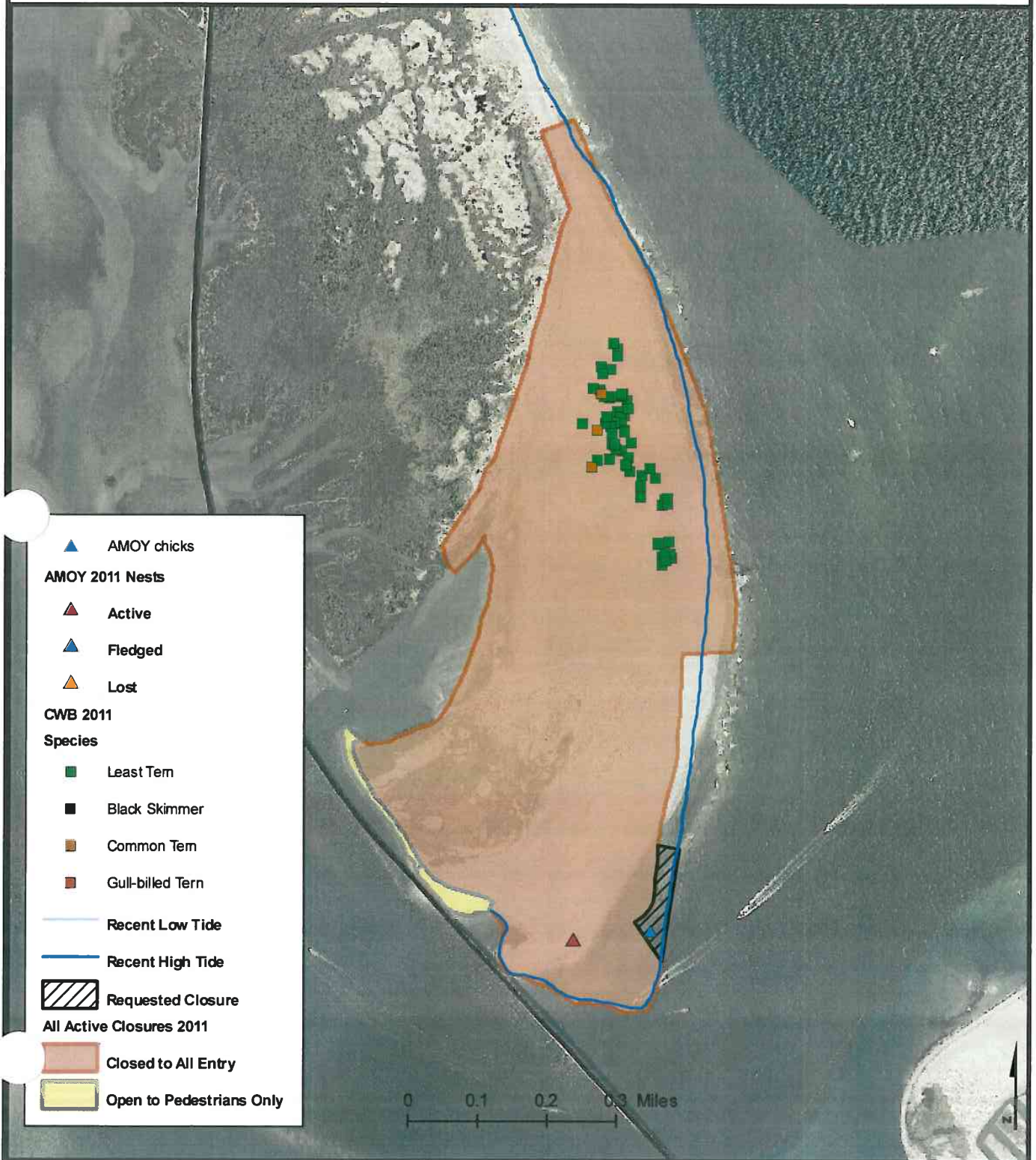
Submitted by B. Muiznieks Approved by: M. Murray (Verbally)

M. Murray
Superintendent

6/29/11
Date



011 BI-11-001-F Closure Request



hand delivered

Number BI-11-001-G

Date: 7/1/2011

To: Superintendent, Outer Banks Group
From: Chief, Resource Management, Outer Banks Group
Subject: RESOURCE PROTECTION CLOSURE REQUEST

Type of closure:

- breeding (list species PIPL)
- non-breeding (list species)
- vegetation/dune (list any T&E species)
- deliberate violation

New Closure - Modification of Existing Closure - Removal of Closure

Proposed Actual Installation date: 7/3/2011

Reason for closure, modification or removal: The Consent Decree states that NPS "shall establish buffers for nests and chicks." The Consent Decree also states that the chick buffer for PIPLs will be 1,000 meters for ORV's and 300 meters for pedestrians.

In anticipation of hatching during the holiday weekend, the 1,000 meter ORV buffer shall be established.

Physical location: 0.5 miles south of Ramp 4

ORV area - non-ORV area - Village - Day Use Area - Other()

Description of Action (If additional space needed, put on separate sheet. Attach map showing sketch of proposed closure with approximate perimeter distances and distance to the tide line if applicable): The closure will be expanded to maintain a 1,000 meter ORV buffer around the chicks. The pedestrian buffer will result in the closure of Bodie Island Spit to ORVs at ~0.3 mi S of Ramp 4 and extend for approximately 265 meters (or ~0.2 mi). The full beach AMOY/least tern closure to the south of the pedestrian area will remain in place.

Anticipated removal date:

Removal certification:

Name

Date

Thayer Bird
7/5/2011

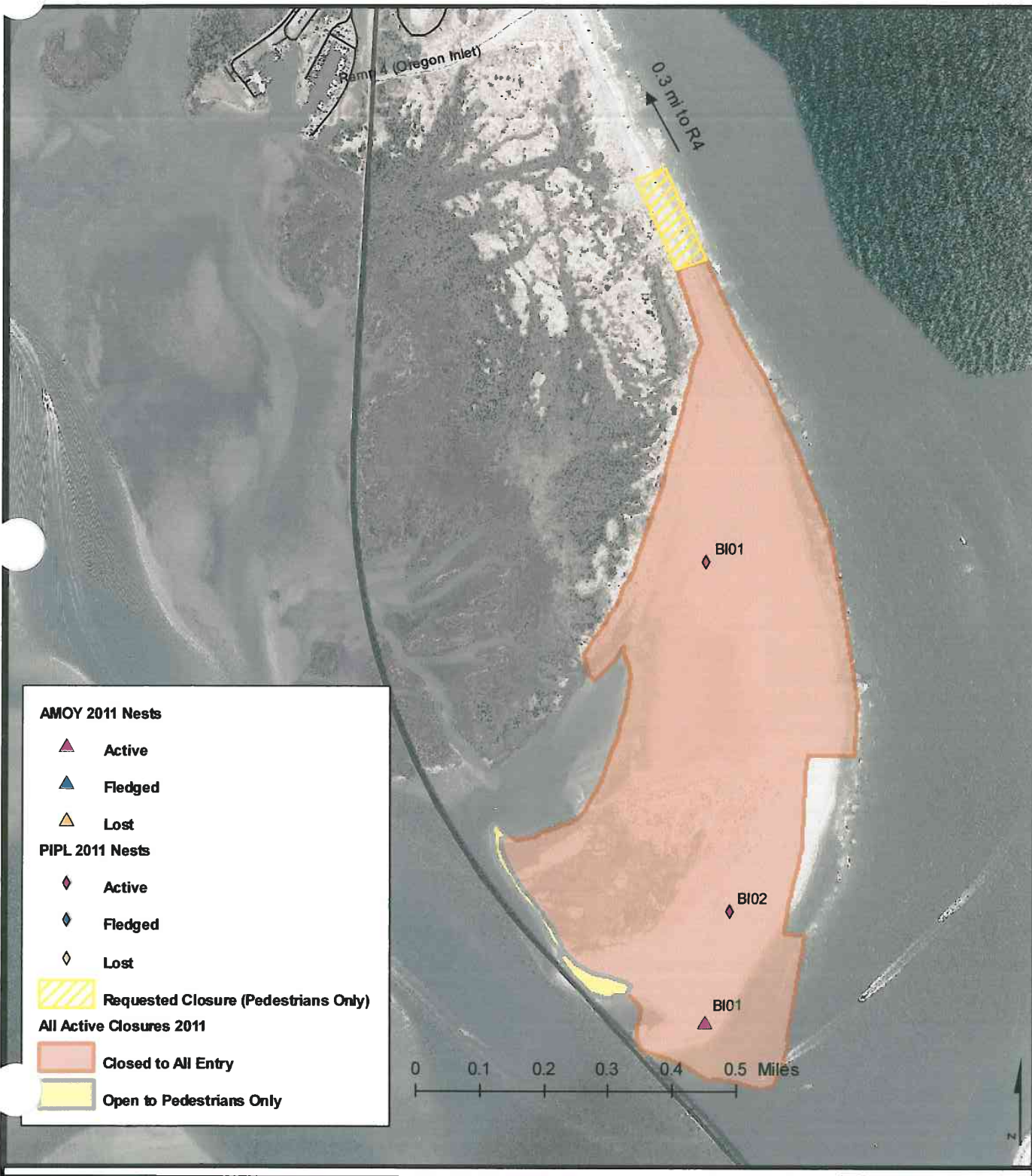
Submitted by B. Muiznieks Approved by: M. Murray (Verbally)

M. Murray
Superintendent

7/05/11
Date



2011 BI-11-001-G Closure Request



hand delivered

Number BI-11-001-H

Date: 7/18/2011

To: Superintendent, Outer Banks Group
From: Chief, Resource Management, Outer Banks Group
Subject: RESOURCE PROTECTION CLOSURE REQUEST

Type of closure:

- breeding (list species - PIPL)
- non-breeding (list species)
- vegetation/dune (list any T&E species)
- deliberate violation

New Closure - Modification of Existing Closure - Removal of Closure

Proposed Actual Installation date: 7/18/2011

Reason for closure, modification or removal: The Consent Decree states that NPS "shall establish buffers for nests and chicks." The Consent Decree also states that the chick buffer for PIPLs will be 1,000 meters for ORV's and 300 meters for pedestrians.

PIPL nest 2 hatched but has not yet moved away from the nest site. Because we have no history for PIPL chicks from this location, we cannot predict with any confidence in which direction the brood is going to move once it leaves the nest site.

Physical location: 0.5 miles south of Ramp 4

ORV area - non-ORV area - Village - Day Use Area - Other()

Description of Action (If additional space needed, put on separate sheet. Attach map showing sketch of proposed closure with approximate perimeter distances and distance to the tide line if applicable): In order to maintain a 1,000 meter ORV buffer around the chicks, Bodie Island spit will be closed to all access. The "limited access" areas will now be closed to all access. The closure begins at ~0.3 mi S of Ramp 4 and extends for ~2 miles. A pedestrian only area begins at 0.3 mi S of Ramp 4 and extends ~0.2 miles to the south.

Anticipated removal date:

Removal certification:

Name

Date

*Thayer Boudin
7/19/2011*

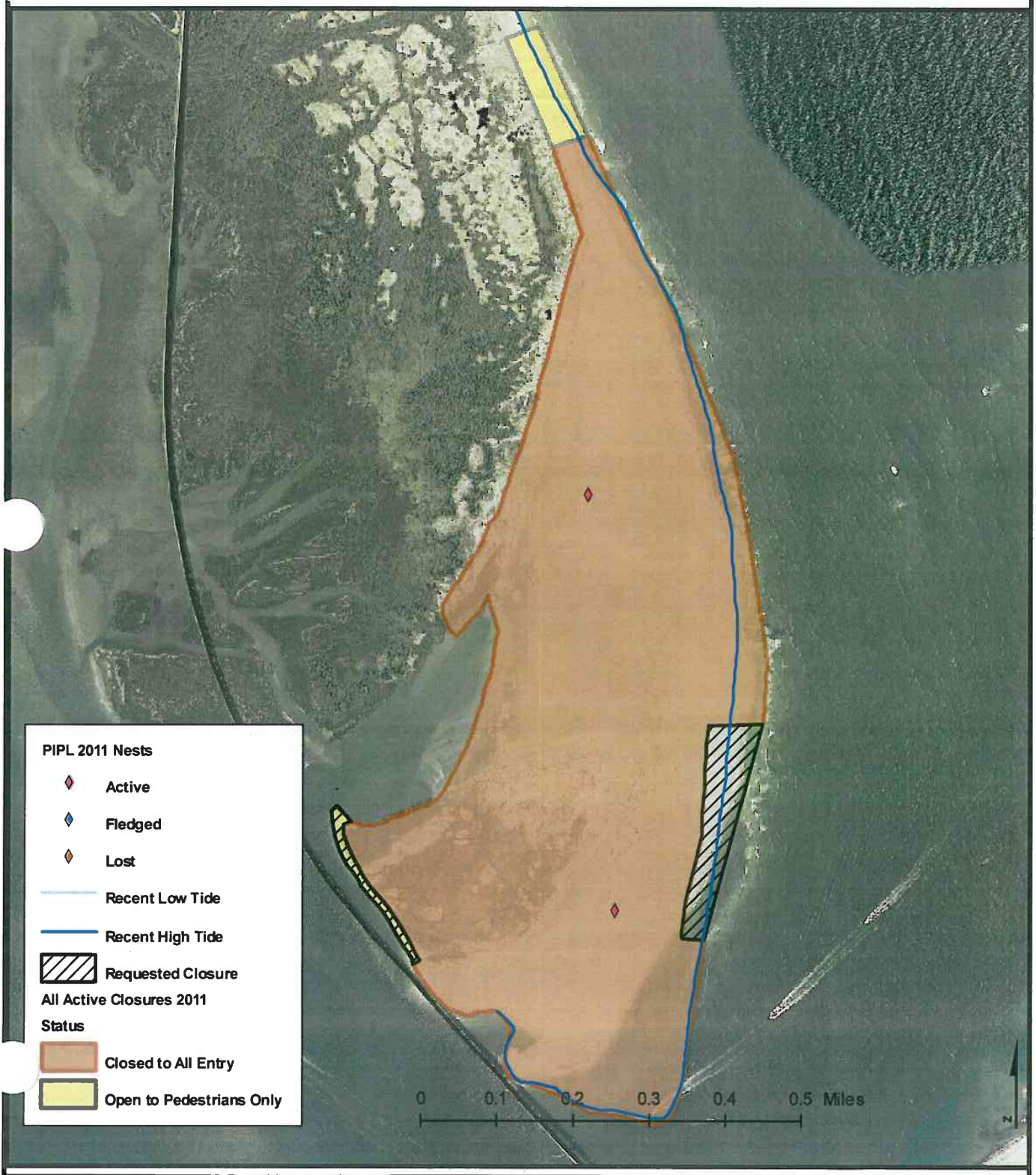
Submitted by B. Muiznieks Approved by: M. Murray (Verbally)

M. Murray
Superintendent

7-19-11
Date



011 BI-11-001-H Closure Request



PIPL 2011 Nests

- ◆ Active
- ◆ Fledged
- ◆ Lost

— Recent Low Tide

— Recent High Tide

▨ Requested Closure

All Active Closures 2011

Status

- Closed to All Entry
- Open to Pedestrians Only

FAXED
8/19/11
MR

Number BI-11-001-I

Date: 8/11/2011

To: Superintendent, Outer Banks Group
From: Chief, Resource Management, Outer Banks Group
Subject: RESOURCE PROTECTION CLOSURE REQUEST

Type of closure:

- breeding (list species AMOY)
- non-breeding (list species)
- vegetation/dune (list any T&E species)
- deliberate violation

New Closure - Modification of Existing Closure - Removal of Closure

Proposed Actual Installation date: 8/11/2011

Reason for closure, modification or removal: The chick fledged 7/27. The two week post-fledgling period ended for the fledgling from AMOY pair GrC9/UNB.

The area was survey for Sea Beach Amaranth and no plants were found.

Physical location: 1.6 miles south of Ramp 4

ORV area - non-ORV area - Village - Day Use Area - Other()

Description of Action (If additional space needed, put on separate sheet. Attach map showing sketch of proposed closure with approximate perimeter distances and distance to the tide line if applicable): The signage for the closure was removed between 1.6 to 1.9 miles south of Ramp 4. This opened up ~0.4 miles of shoreline to pedestrian access (accessible only by boat). The pre-nesting closure is still in place.

Anticipated removal date:

Removal certification:

Name

Date

Thompson Beach
8/18/2011

Submitted by J. Wright Approved by: M. Murray (Verbally)

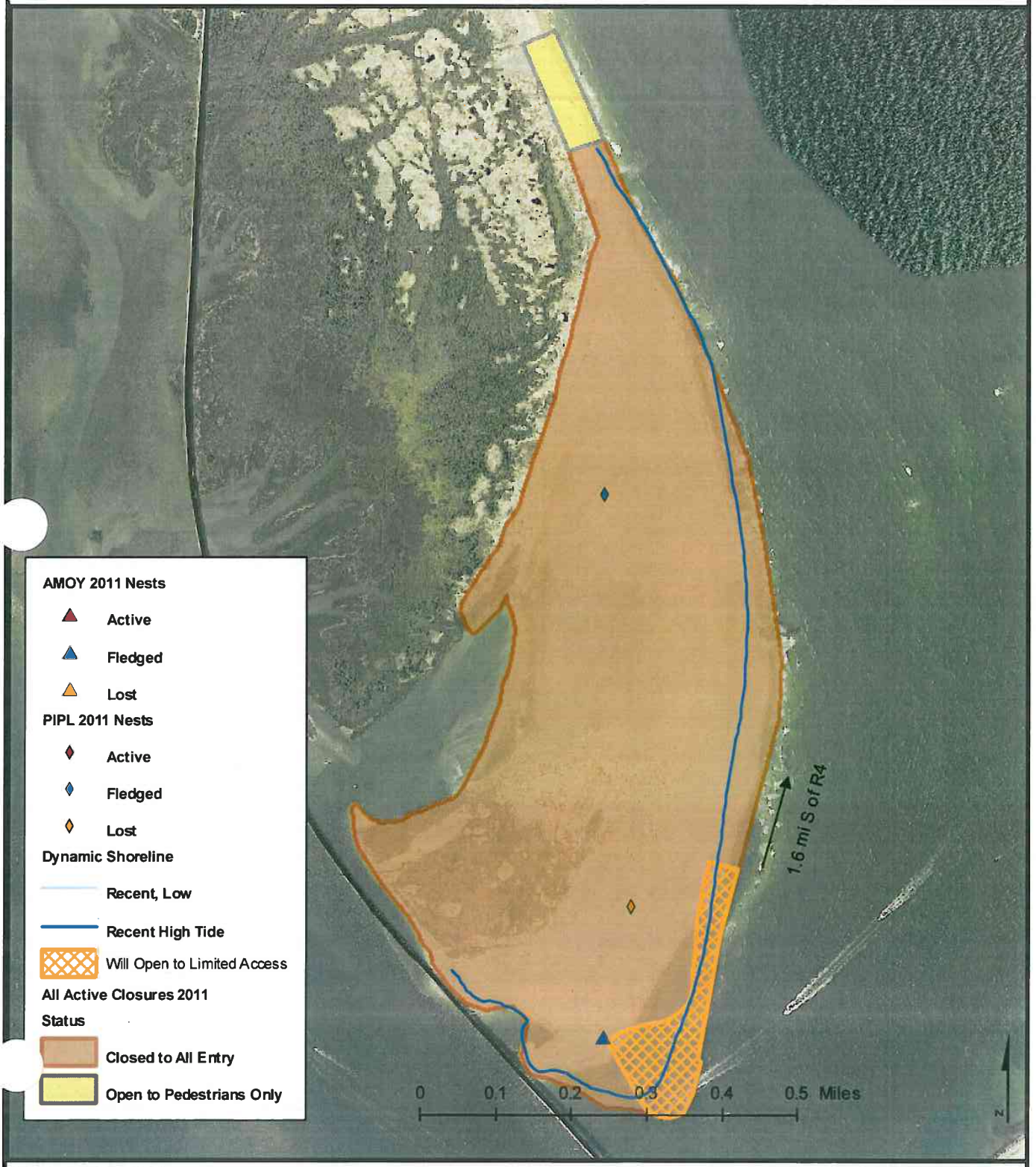
M. Murray

Superintendent

Date 8/18/11



011 BI-11-001-I Closure Request



FAXED
8/19/11

Number BI-11-001-J

MR

Date: 8/12/2011

To: Superintendent, Outer Banks Group
From: Chief, Resource Management, Outer Banks Group
Subject: RESOURCE PROTECTION CLOSURE REQUEST

Type of closure:

- breeding (list species LETE)
- non-breeding (list species)
- vegetation/dune (list any T&E species)
- deliberate violation

New Closure - Modification of Existing Closure - Removal of Closure

Proposed Actual Installation date: 8/12/2011

Reason for closure, modification or removal: No LETE breeding activity has been observed, with daily monitoring, for over two weeks.

Area surveyed for Sea Beach Amaranth and no plants were found.

Physical location: 0.8 miles south of Ramp 4

ORV area - non-ORV area - Village - Day Use Area - Other()

Description of Action (If additional space needed, put on separate sheet. Attach map showing sketch of proposed closure with approximate perimeter distances and distance to the tide line if applicable): The closure was located between 0.8 to 1.2 mi South of Ramp 4. With the removal of the signage, ~0.4 mi of shoreline is open to pedestrian access (accessible only by boat). The pre-nesting closure is still in place. The PIPL closure at ~0.3 mi South of Ramp 4 still limits ORV and Pedestrian Access to the spit.

Anticipated removal date:

Removal certification:

Name

Date

Thompson
Boat
8/18/2011

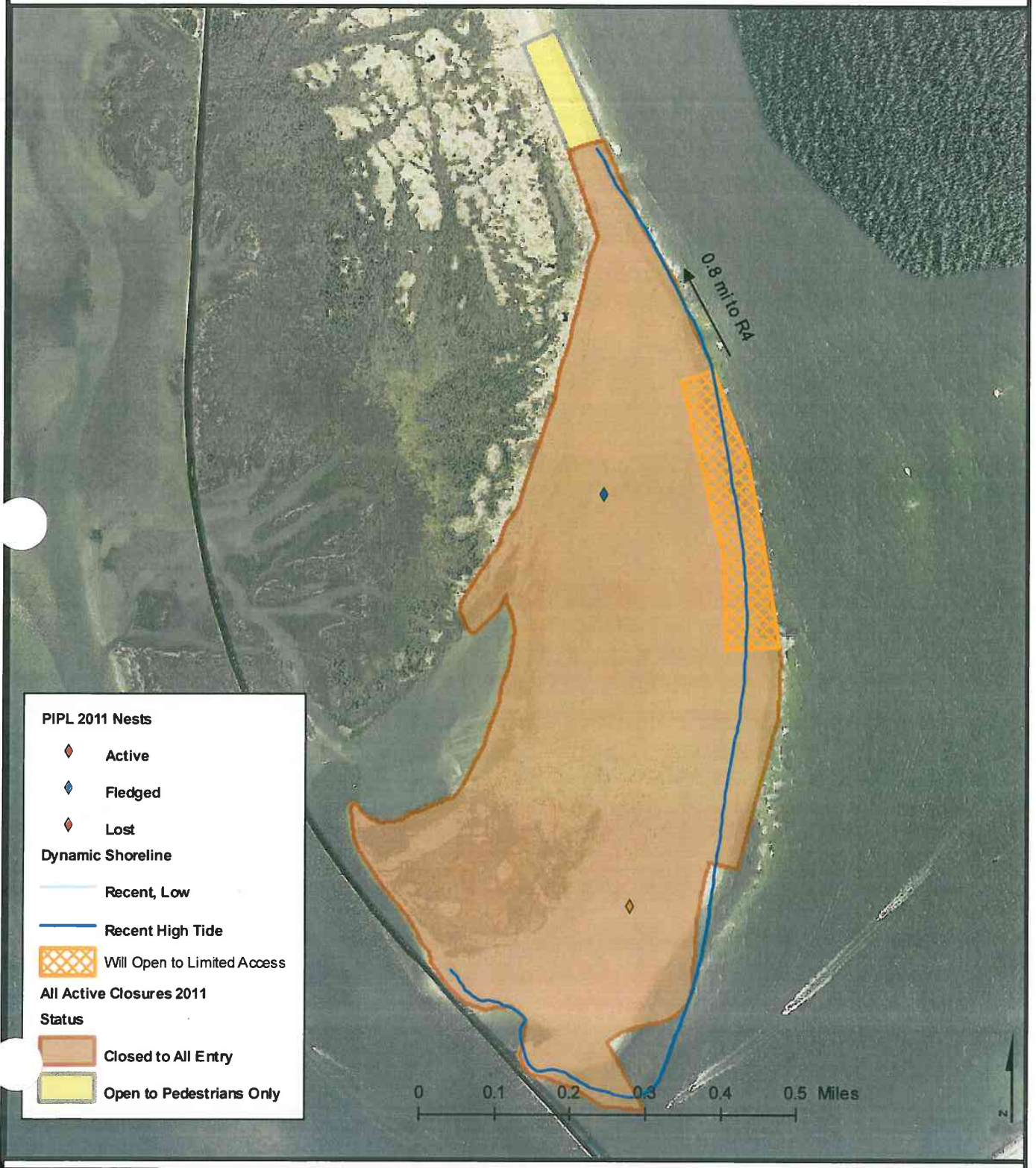
Submitted by J. Wright Approved by: M. Murray (Verbally)

M. Murray
Superintendent

8/19/11
Date



011 BI-11-001-J Closure Request



FAXED
8/19/11
MR

Number BI-11-001-K

Date: 8/15/2011

To: Superintendent, Outer Banks Group
From: Chief, Resource Management, Outer Banks Group
Subject: RESOURCE PROTECTION CLOSURE REQUEST

Type of closure:

- breeding (list species LETE, PIPL, AMOY, COTE)
- non-breeding (list species)
- vegetation/dune (list any T&E species)
- deliberate violation

New Closure - Modification of Existing Closure - Removal of Closure

Proposed Actual Installation date: 8/15/2011

Reason for closure, modification or removal: No breeding activity has been observed, with daily monitoring, for over two weeks.

Area surveyed for Sea Beach Amaranth and no plants were found.

Physical location: 0.6 miles south of Ramp 4

ORV area - non-ORV area - Village - Day Use Area - Other()

Description of Action (If additional space needed, put on separate sheet. Attach map showing sketch of proposed closure with approximate perimeter distances and distance to the tide line if applicable): The pre-nesting closure will be removed and replaced with the winter closure. The PIPL closure at ~0.3 mi South of Ramp 4 still limits ORV and Pedestrian Access to the spit.

Anticipated removal date:

Removal certification:

Name

Date

Submitted by M. Piatak Approved by: M. Murray (Verbally)

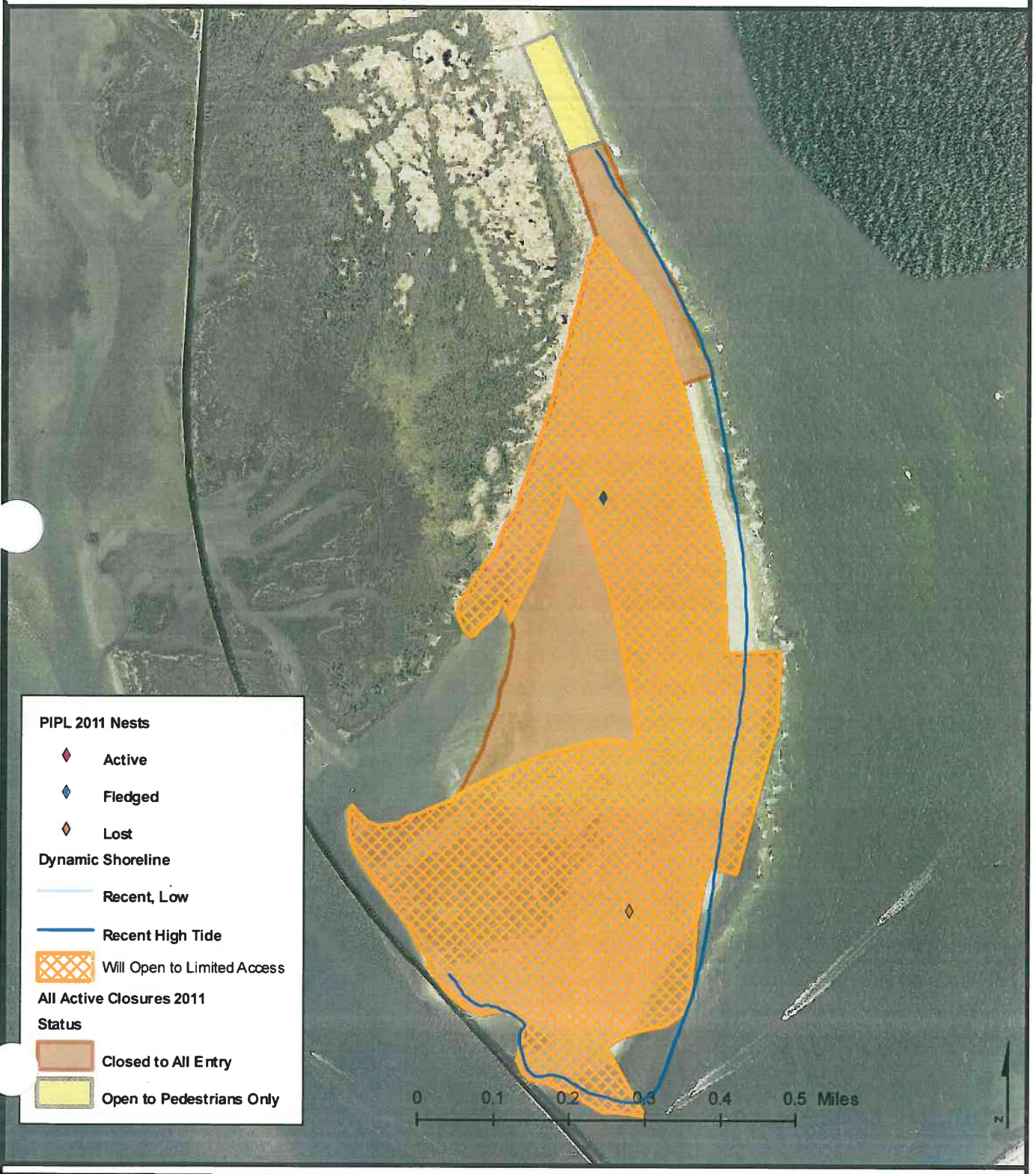
Ther *Beck*
8/18/2011

M. Murray
Superintendent

8-19-11
Date



011 BI-11-001-K Closure Request



FILED
8/19/11

MYR

Number BI-11-001-R

Date: 8/17/2011

To: Superintendent, Outer Banks Group
From: Chief, Resource Management, Outer Banks Group
Subject: RESOURCE PROTECTION CLOSURE REQUEST

Type of closure:

- breeding (list species PIPL, AMOY, L E T E)
- non-breeding (list species)
- vegetation/dune (list any T&E species)
- deliberate violation

New Closure - Modification of Existing Closure - Removal of Closure

Proposed Actual Installation date: 8/17/2011

Reason for closure, modification or removal: The two PIPL chicks fledged on 8/3. It has been two weeks post fledgling.

The area was surveyed for Sea Beach Amaranth and no plants found.

Physical location: 0.3 miles south of Ramp 4

ORV area - non-ORV area - Village - Day Use Area - Other()

Description of Action (If additional space needed, put on separate sheet. Attach map showing sketch of proposed closure with approximate perimeter distances and distance to the tide line if applicable): The removal of the closure will open up Bodie Island Spit to all access. The winter closure is in place.

Anticipated removal date:

Removal certification: M. Piatak 8/17/11
Name Date

Submitted by M. Piatak Approved by: M. Murray (Verbally)

Thay Brink 8/19/2011

M. Murray Superintendent 8/19/11 Date