

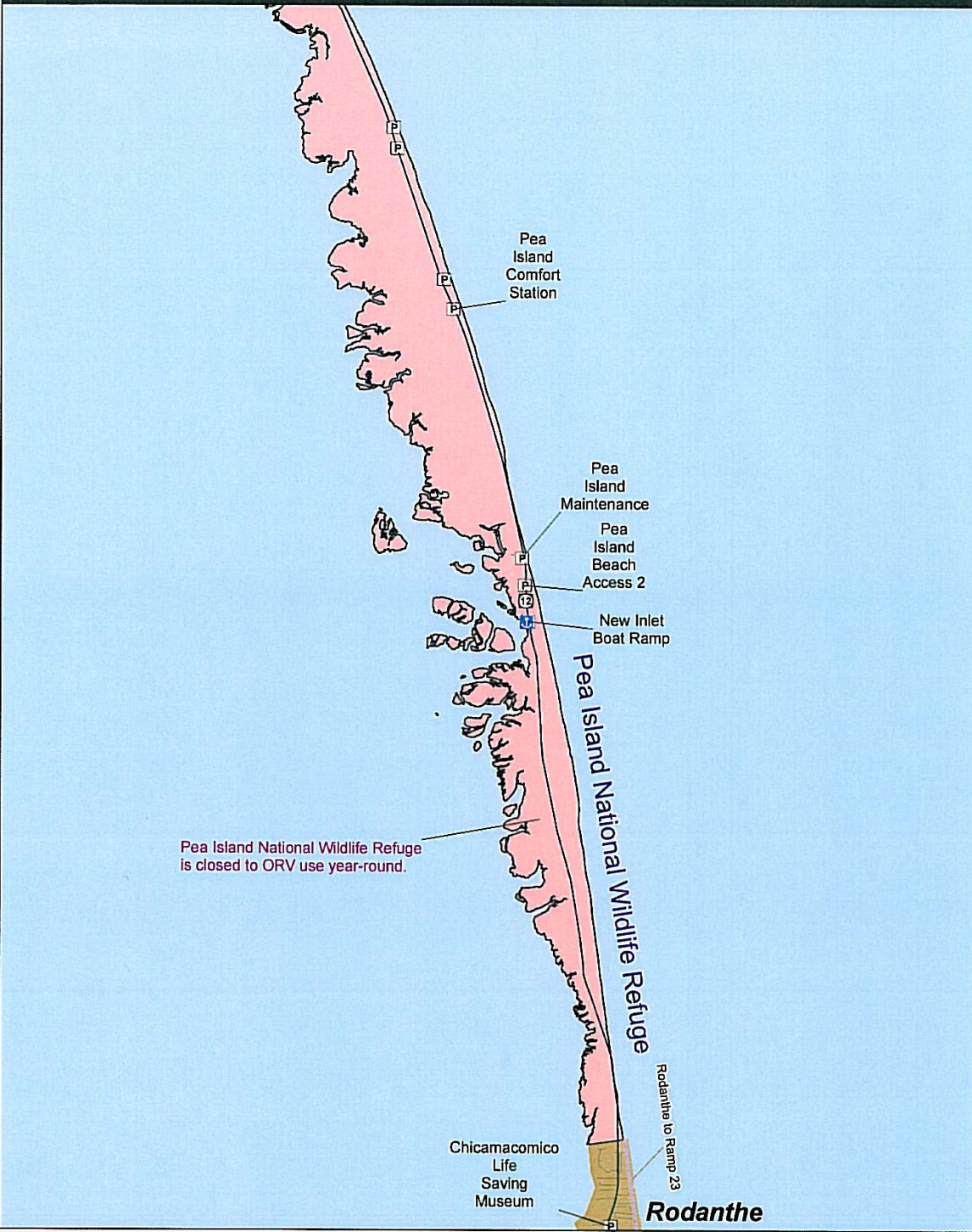
Legend

CAHA Boundary	ORV Ramps	Interstate
PINWR Boundary	Oceanside Ramps	US Hwy
Villages	Soundside Ramps	State Hwy
Boat Ramps	Current Access (status quo)	Other
Campgrounds	Closed to ORV Year-Round	Ferry Route
Parking Lots	Seasonally Open to ORV*	
Airports	Open to ORV Year-Round*	
Swim Beaches	*Areas open to ORV are subject to temporary resource or safety closures.	

**Bodie Island Ranger District
Map 1 of 3**

Produced By: NPS and The Louis Berger Group, Inc. December 2007

0 0.5 1 1.5 Miles



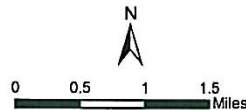
Legend

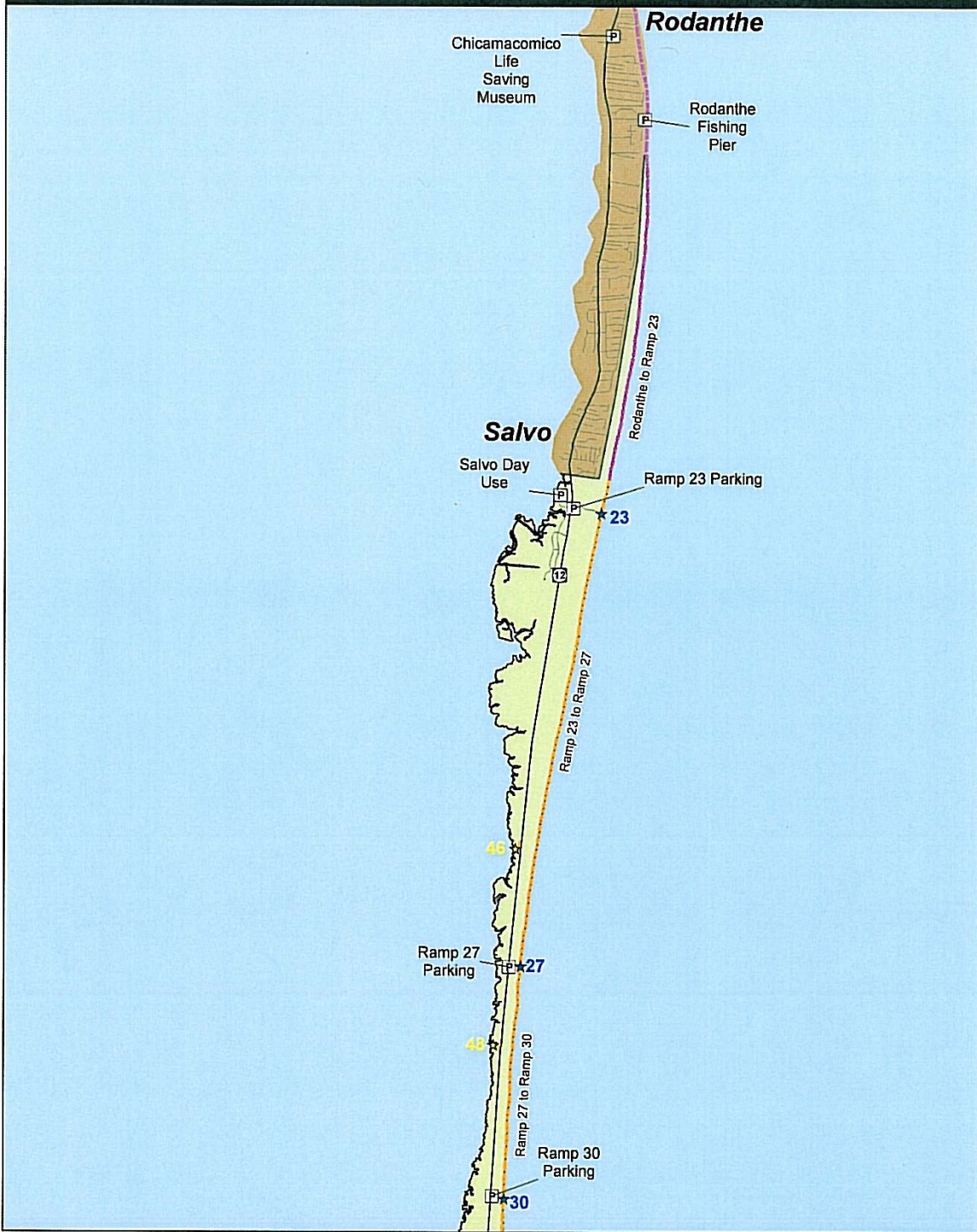
- | | | | | | |
|--|----------------|------------------------------------|--------------------------|--|------------|
| | CAHA Boundary | | ORV Ramps | | Interstate |
| | PINWR Boundary | | Oceanside Ramps | | US Hwy |
| | Villages | | Soundside Ramps | | State Hwy |
| | Boat Ramps | | Ferry Route | | Other |
| | Campgrounds | Current Access (status quo) | | | |
| | Parking Lots | | Closed to ORV Year-Round | | |
| | Airports | | Seasonally Open to ORV* | | |
| | Swim Beaches | | Open to ORV Year-Round* | | |

*Areas open to ORV are subject to temporary resource or safety closures.

Produced By: NPS and The Louis Berger Group, Inc. December 2007

Bodie Island Ranger District
Map 2 of 3

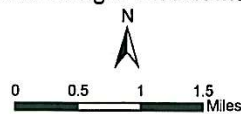


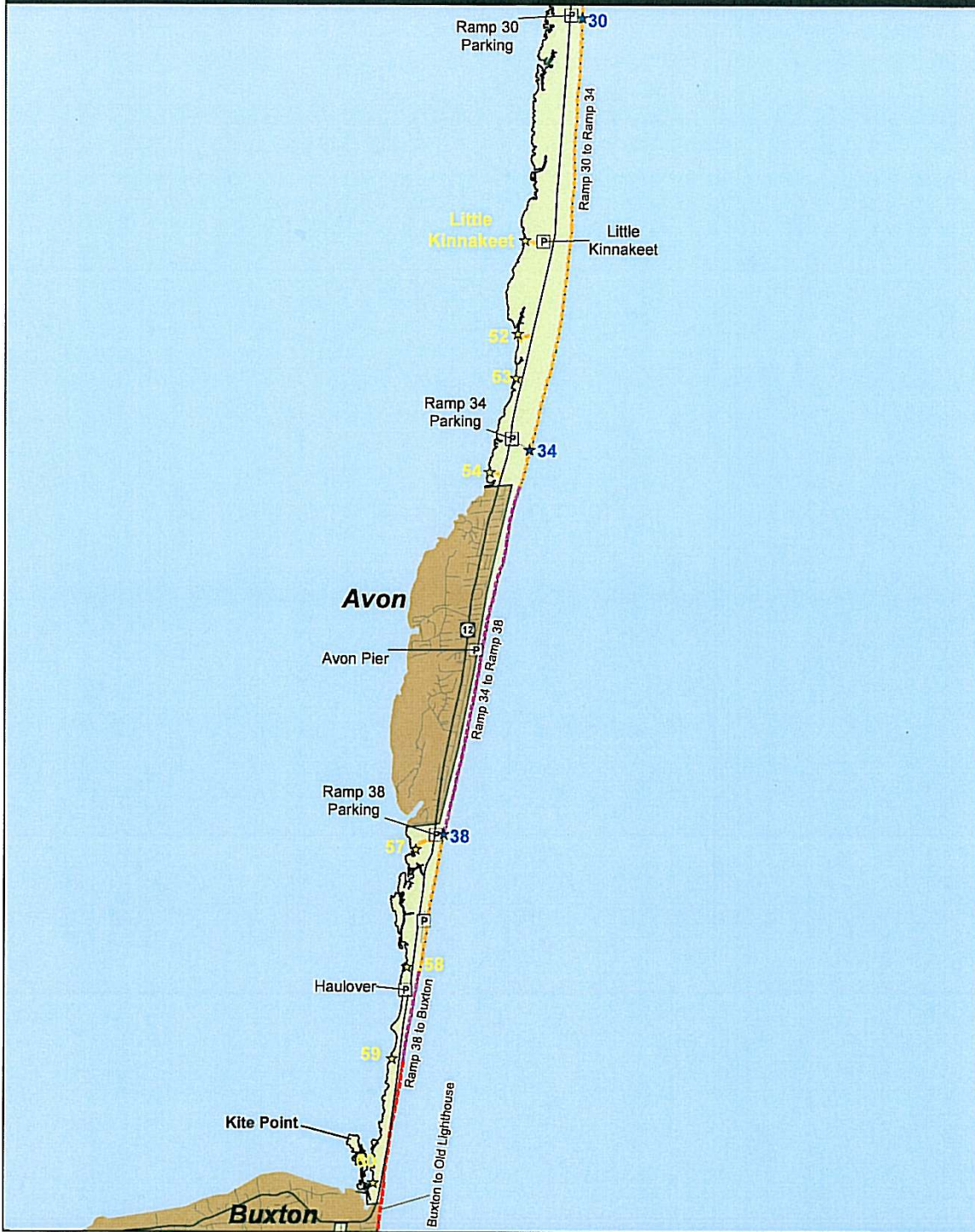


Legend

- | | | |
|--|--|--|
| | ORV Ramps | |
| | | |
| | | |
| | Current Access (status quo) | |
| | | |
| | | |
| | | |
| | *Areas open to ORV are subject to temporary resource or safety closures. | |

Bodie Island Ranger District Map 3 of 3 &
Hatteras Island Ranger District Map 1 of 4

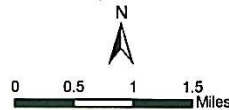


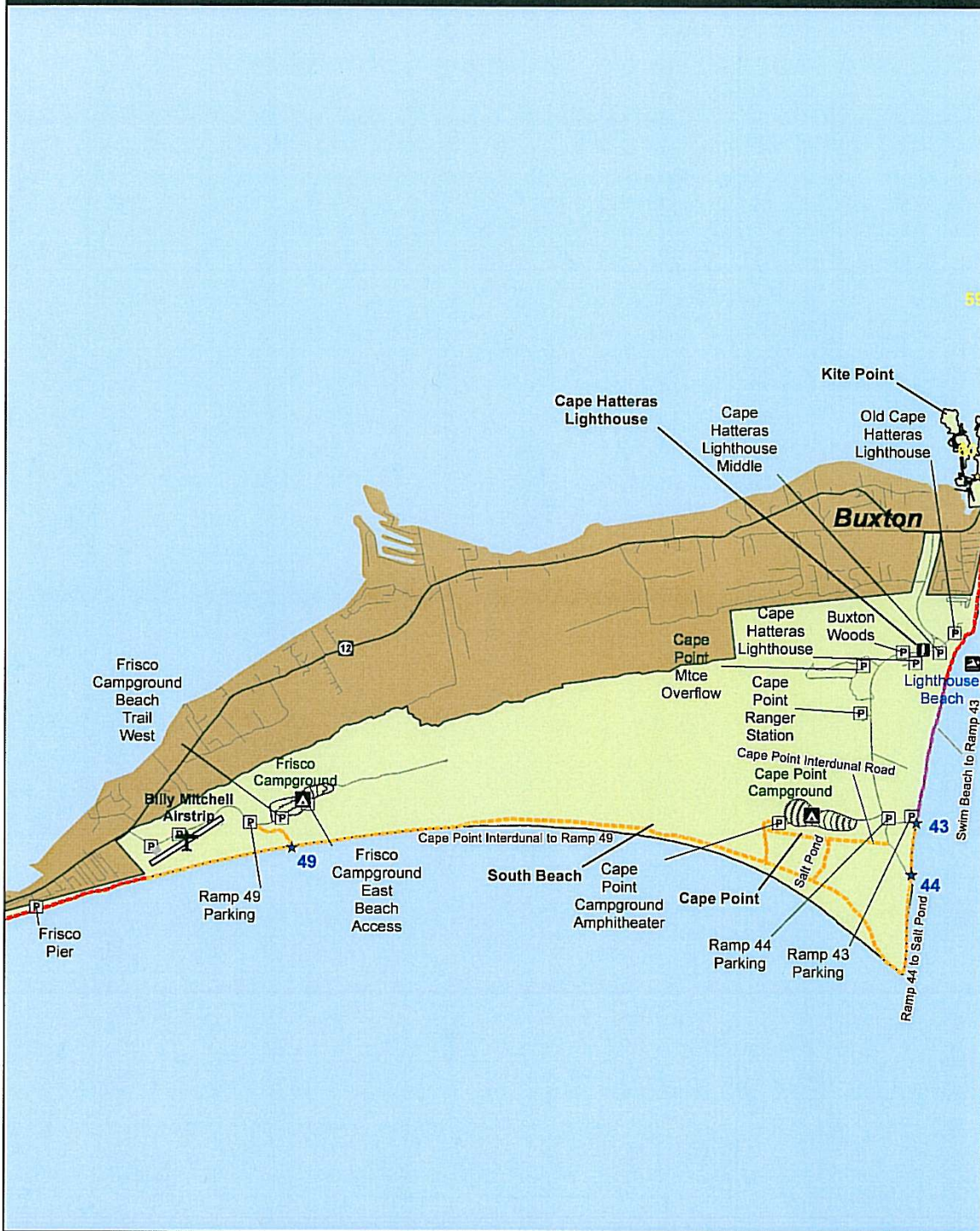


Legend

- | | | |
|--|--|--|
| | ORV Ramps | |
| | Oceanside Ramps | |
| | Soundside Ramps | |
| | Current Access (status quo) | |
| | Closed to ORV Year-Round | |
| | Seasonally Open to ORV* | |
| | Open to ORV Year-Round* | |
| | *Areas open to ORV are subject to temporary resource or safety closures. | |

Hatteras Island Ranger District
Map 2 of 4



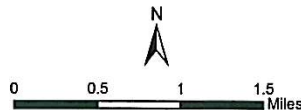


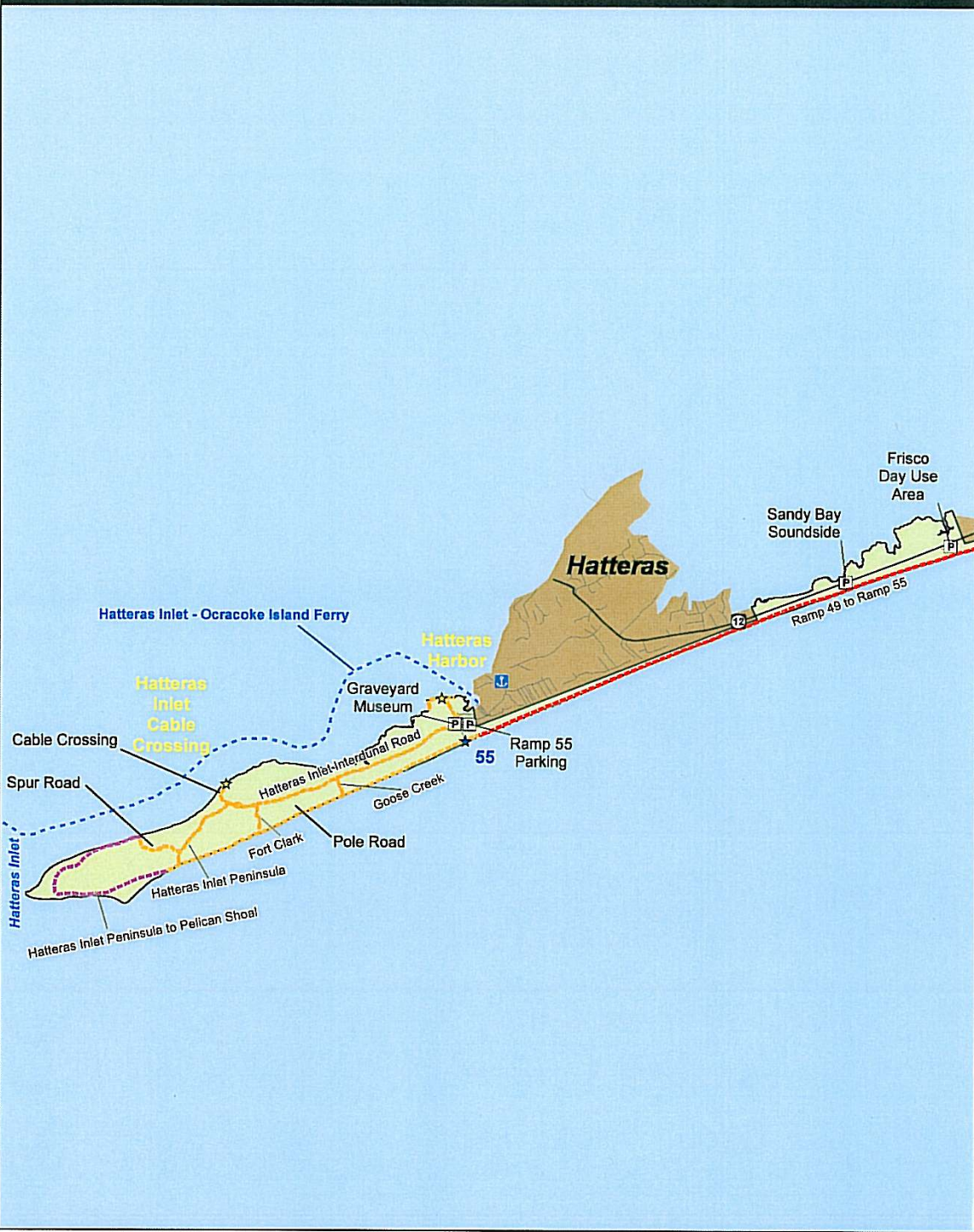
Legend

- | | | |
|----------------|--|-------------|
| CAHA Boundary | ORV Ramps | Interstate |
| PINWR Boundary | Oceanside Ramps | US Hwy |
| Villages | Soundside Ramps | State Hwy |
| Boat Ramps | Current Access (status quo) | Other |
| Campgrounds | Closed to ORV Year-Round | Ferry Route |
| Parking Lots | Seasonally Open to ORV* | |
| Airports | Open to ORV Year-Round* | |
| Swim Beaches | *Areas open to ORV are subject to temporary resource or safety closures. | |

Produced By: NPS and The Louis Berger Group, Inc., December 2007

Hatteras Island Ranger District
Map 3 or 4





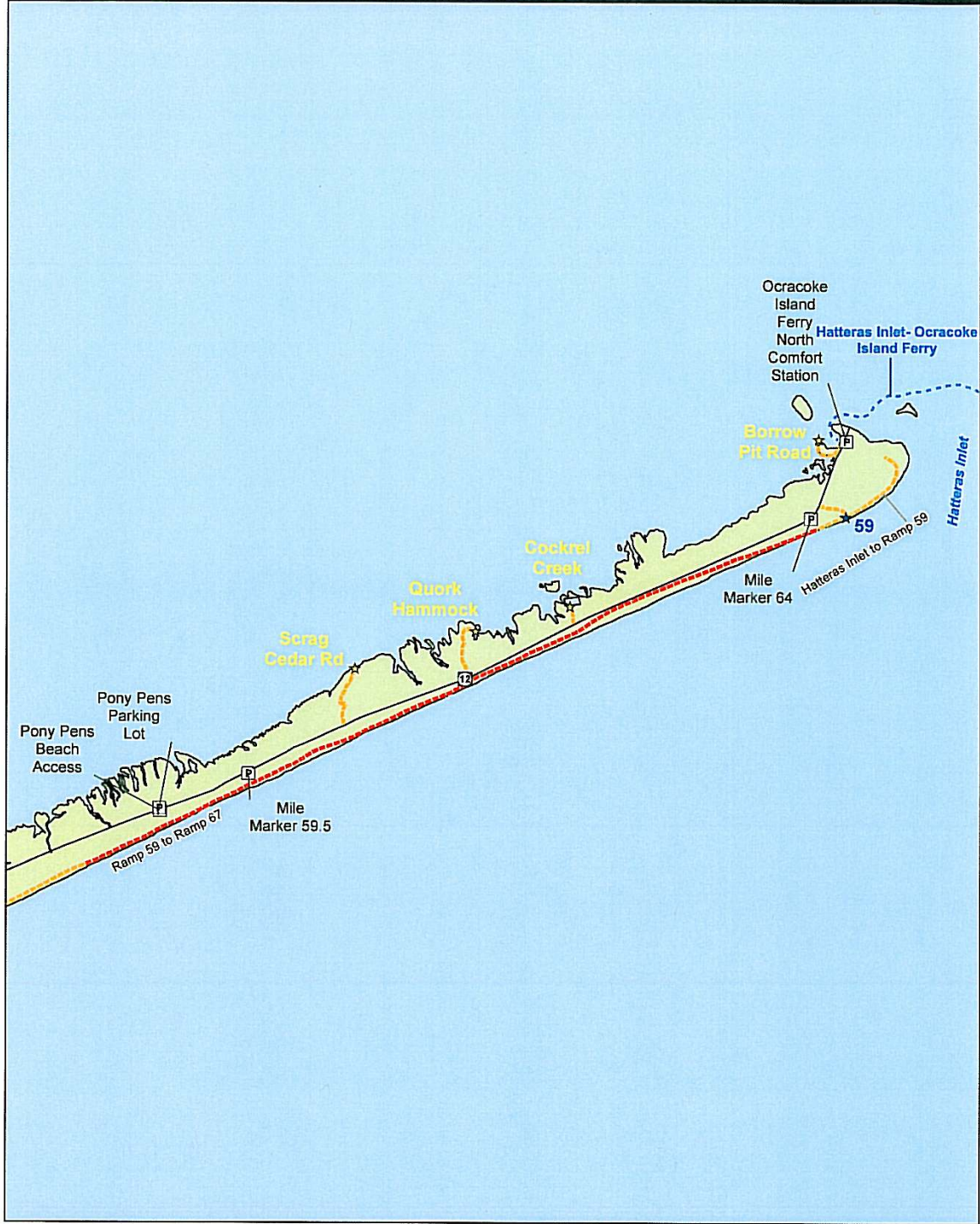
Legend

- | | | |
|----------------|--|-------------|
| CAHA Boundary | ORV Ramps | Interstate |
| PINWR Boundary | Oceanside Ramps | US Hwy |
| Vilages | Soundside Ramps | State Hwy |
| Boat Ramps | Current Access (status quo) | Other |
| Campgrounds | Closed to ORV Year-Round | Ferry Route |
| Parking Lots | Seasonally Open to ORV* | |
| Airports | Open to ORV Year-Round* | |
| Swim Beaches | *Areas open to ORV are subject to temporary resource or safety closures. | |

Produced By: NPS and The Louis Berger Group, Inc. December 2007

Hatteras Island Ranger District
Map 4 of 4



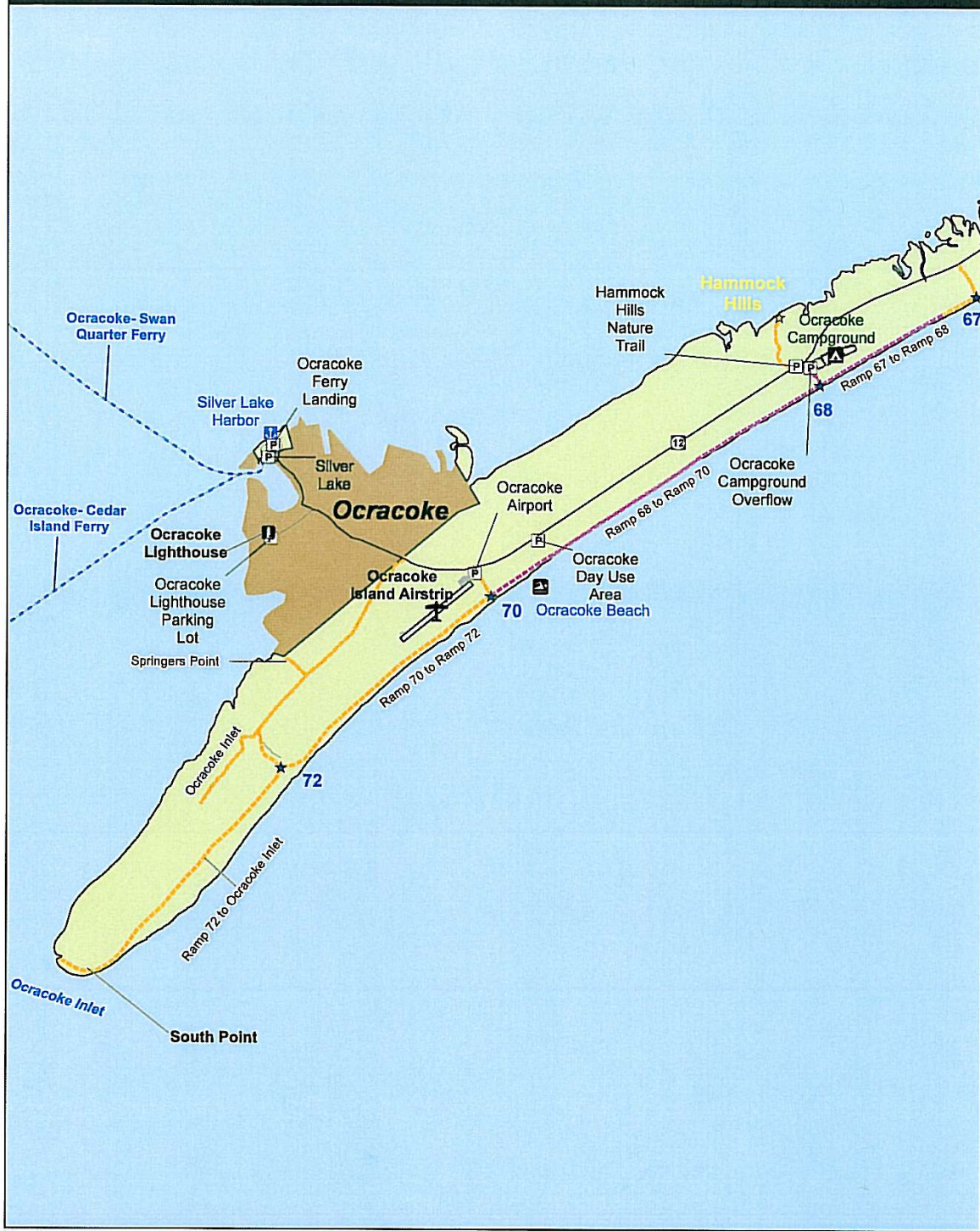


Legend

CAHA Boundary	ORV Ramps	Interstate
PINWR Boundary	Oceanside Ramps	US Hwy
Villages	Soundside Ramps	State Hwy
Boat Ramps	Current Access (status quo)	Other
Campgrounds	Closed to ORV Year-Round	Ferry Route
Parking Lots	Seasonally Open to ORV*	
Airports	Open to ORV Year-Round*	
Swim Beaches	*Areas open to ORV are subject to temporary resource or safety closures.	

Produced By: NPS and The Louis Berger Group, Inc., December 2007

Ocracoke Island Ranger District
Map 1 of 2



Legend

- | | | |
|----------------|--|-------------|
| CAHA Boundary | ORV Ramps | Interstate |
| PINWR Boundary | Oceanside Ramps | US Hwy |
| Villages | Soundside Ramps | State Hwy |
| Boat Ramps | Current Access (status quo) | Other |
| Campgrounds | Closed to ORV Year-Round | Ferry Route |
| Parking Lots | Seasonally Open to ORV* | |
| Airports | Open to ORV Year-Round* | |
| Swim Beaches | *Areas open to ORV are subject to temporary resource or safety closures. | |

Ocracoke Island Ranger District
Map 2 of 2

